



2010 National Rainbow Family Gathering

INCIDENT ACTION PLAN

**JUNE 26, 2010 until Amended
Allegheny National Forest
Pennsylvania**

Table of Contents	Page
ICS-202 Incident Objectives	1
ICS-203 Organization Assignment List	2
ICS-204 Division Assignments	3-7
Radio Call Signs	8
Safety Message	9
Emergency Phone Numbers	10-13
Site Visitation Guidelines	14
Communication Plan	15-16
Shared Mineral Lease Map and Contacts	17

For Official Use Only

INCIDENT OBJECTIVES	1. Incident Name: 2010 National Rainbow Family Gathering	2. Date Prepared: 6/19/2010	3. Time Prepared: 1600
4. Operational Period: June 25, 2010 0001-2400 until amended			
5. General Objectives For The Incident:			
<p>1. Ensure that the safety of employees, assigned personnel, the public, and event participants are considered throughout the course of the event.</p> <p>2. Establish and maintain internal and external communications and relationships with cooperating agencies, federal, tribal, state and local government officials, private landowners, permittees, local businesses, communities, and the Rainbow Family Gathering Participants.</p> <p>3. Protect resource values including the Hickory Creek Wilderness and adjacent proposed wildernesses through prompt identification, signing and monitoring of sensitive or unique ecological and heritage resource areas.</p> <p>4. Assure that all roads within the gathering area remain open for emergency vehicle travel.</p>			
6. Weather Forecast For Period			
25	26	27	28
29	30	1	2
3			
Hi 80°F Lo 61°F	Hi 82°F Lo 63°F	Hi 82°F Lo 69°F	Hi 77°F Lo 59°F
Hi 69°F Lo 56°F	Hi 71°F Lo 57°F	Hi 75°F Lo 57°F	Hi 77°F Lo 61°F
Hi 81°F Lo 65°F			
Precip 0 %	Precip 30 %	Precip 40 %	Precip 40 %
Precip 10 %	Precip 30 %	Precip 30 %	Precip 60 %
Precip 20 %			
7. General Safety Message			
See attached safety message			
8. ATTACHEMENTS (X IF ATTACHED)			
X Organization List - ICS 203	X Emergency Contact List	X Safety Message	
X Division Assignment Lists - ICS 204	X Incident Map		
X Communications Plan - ICS 205	Traffic Plan	X Radio Call Signs	
X Shared Mineral Lease Map & Contact List	X Organization Chart	X Site Visitation Guidelines	
9. Prepared By (Planning Section Chief)		10. Approved By (Incident Commander)	
Peter Fischer		GENE SMITHSON /s/ Aban Lucero (For)	

ORGANIZATION ASSIGNMENT LIST		2010 National Rainbow Family Gathering	June 24, 2010	PREPARED 1130
POSITION	NAME	4. OPERATIONAL PERIOD (DATE/TIME)		
		June 25, 2010 0001-2400 until amended		
5. INCIDENT COMMANDER AND STAFF		10. OPERATIONS SECTION		
INCIDENT COMMANDER	Gene Smithson	CHIEF	Aban Lucero	
INCIDENT COMMANDER	Tony Scardina	CHIEF	Steve Burd	
SAFETY OFFICER	Bob Beckley, Erin Leet Beth Rankin,	INVESTIGATOR	Lucas Woolf	
INFORMATION OFFICER	Nadine Pollock/ Mary Rasmussen	INVESTIGATOR	Bill Mickle	
FIELD INFORMATION OFFICER	Kathy Mohney	DEPUTY		
FIELD INFORMATION OFFICER	Jennifer Work	DIVISION/GROUP	Day	Mark Heitzman
6. NATIONAL FOREST AGENCY REPRESENTATIVES		DIVISION/GROUP	Evening	Chad Krogstad
AGENCY	NAME	DIVISION/GROUP	Night	Chuck Humphrey
ANF	Leanne Martin, Forest Supervisor	DIVISION/GROUP	Mounted	Kathy VanCamp
		DIVISION/GROUP		
		11. INCIDENT COMMAND AGENCY REPRESENTATIVES		
		CONEWANGO TOWNSHIP POLICE DEPARTMENT	Jerry Falconer, Chief	
		ELK COUNTY SHERIFF'S DEPARTMENT	Jeff Krieg, Sheriff	
7. PLANNING SECTION		ELK COUNTY 911& EMA	Mike McAllister, Director	
CHIEF	Peter Fischer	FOREST COUNTY SHERIFF DEPARTMENT	Robert Wolfgang, Sheriff	
TECHNICAL SPECIALISTS		PENNSYLVANIA STATE POLICE	Capt. Mark Schau	
		RIDGEWAY POLICE DEPARTMENT	Shawn Greci, Senior Officer	
		WARREN CITY POLICE DEPARTMENT	Ray Zydonik, Chief	
		WARREN COUNTY DISTRICT ATTORNEY'S OFFICE & DTF	John Herzog, County Detective	
		WARREN COUNTY SHERIFF's DEPARTMENT	Ken Klakamp, Chief Deputy	
8. Special Use/ Resources		WARREN COUNTY 911 and EMA	Terry Carlson, Deputy Director	
SUP/ RESOURCE ADVISOR	Marcia Rose - Ritchie			
RESOURCE TEAM LEADER	Rebecca Roof			
RESOURCE ADVISOR/ FPO	Dave Cotterman			
RESOURCE ADVISOR/ FPO	George Fusco			
RESOURCE ADVISOR/ FPO	Gary Giger			
RESOURCE ADVISOR/ FPO	Joe Gomola			
9. LOGISTICS SECTION		12. FINANCE/ADMINISTRATION SECTION		
COMMUNICATIONS UNIT	Chris Reynolds	Administrative Officer	Cindy Crawford	
		Logistics/ Time/ LEIMARS	Lauri Cantrell	
		Purchasing/ LEIMARS	Ragan Hall	
PREPARED BY (RESOURCES UNIT)				
Peter Fischer PSC		2		

DIVISION ASSIGNMENT LIST		1. Branch		2. Division/Group Resources/SUP	
3. Incident Name 2010 National Rainbow Family Gathering		4. Operational Period June 20, 2010 Date: Until Amended Time: 0800-2000			
5. Operations Personnel					
Incident Commander	Gene Smithson F-1/ Tony Scardina F-34	Division Supervisors		Marcia Rose-Ritchie F-35	
Operations Chief	Aban Lucero F-2/ Steve Burd F-2	Criminal Investigator		Lucas Woolf F-3, Bill Mickle F-4	
6. Resources Assigned This Period					
Assigned Resources	Call Sign				
Rebecca Roof	F-36				
Dave Cotterman	F-38				
George Fusco	F-39				
Gary Giger	F-40				
Joe Gomola	F-41				
7. Resource/ SUP Operations					
a) Coordinate the development of a Non-Commercial Group Use Permit and associated operating plan. b) Monitor all trails, kitchens, camps, slit trenches and other improvements to ensure compliance with permit and/or operating plan. c) Assist Law Enforcement Officers, Emergency Management and County Health Official's as requested.					
8. Special Instructions					
a) Document all incidents individually on Incident Report. b) Teams may adjust as needed based on individual resource advisor availability. c) GPS all improvements and ground disturbing activities (slit trenches, grey water and compost pits, etc), Provide coordinates (NAD27) to assigned GIS Coordinator.					
Prepared By (Resource Unit Leader)		Approved By (Planning Section Chief)		Date	Time
		/s/ Don Palmer		6/19/2010	1500

DIVISION ASSIGNMENT LIST		1. Branch Law Enforcement		2. Division/Group Day Shift	
3. Incident Name 2010 National Rainbow Family Gathering		4. Operational Period June 20, 2010 Date: Until Amended Time: 0800-2000			
5. Operations Personnel					
Incident Commander	Gene Smithson F-1	Division Supervisors		Mark Heitzman F-5/ Robert Gydus F-12	
Operations Chief	Aban Lucero F-2/Steve Burd F-2	Criminal Investigator		Lucas Woolf F-3, Bill Mickle F-4	
6. Resources Assigned This Period					
Assigned Resources	Call Sign	K9 Unit			
Steve Tchalemian	F-25				
Ken Seymore	F-10	No			
James Willett	F-11				
Andrew Black	F-42	Yes			
Derik Breedlove	F-13				
Roni Etheridge	F-14	No			
7. Enforcement Operations					
a) Protect the public interest including the protection of resources and improvements on National Forest System lands, the allocation of space among potential or existing uses and activities, and public health and safety concerns. b) Patrol and maintain safety on Allegheny Forest Roads within and adjacent to the Non-Commercial Group Use Event Area. c) Check developed recreation areas, dispersed campsites and administrative sites on the district during your patrols. d) Provide support to Resource Advisors, Special Use Administrators and forest personnel visiting the gathering area as requested.					
8. Special Instructions					
a) Conduct daily vehicle counts (1600-1800 hours) and submit to LE Ops at the end of shift. b) LEOs complete all paperwork and turn over to Division Supervisor at the end of shift. c) Collect and disseminate information on participant numbers, specific camp locations, water use, and significant movements of people. d) Monitor all district employees performing duties within the gathering area. e) GPS, video and take digital pictures of existing and potential resource impact areas within the Gathering. Submit this information over to the SUP/ Resource Advisor.					
Prepared By (Resource Unit Leader)		Approved By (Planning Section Chief)		Date	Time
		/s/ Don Palmer		6/19/2010	1400

		Law Enforcement		Night Shift	
3. Incident Name		4. Operational Period			
2010 National Rainbow Family Gathering		June 20, 2010 Date: Until Amended Time: 0001-1200			
5. Operations Personnel					
Incident Commander	Gene Smithson F-1	Division Supervisors		Chuck Humphrey F-7	
Operations Chief	Aban Lucero F-2/Steve Burd F-2	Criminal Investigator		Lucas Woolf F-3, Bill Mickle F-4	
6. Resources Assigned This Period					
Assigned Resources	Call Sign	K9 Unit			
Chuck Humphrey	F-7				
Mark Magales	F-21	No			
Luke Johnson	F-22				
Chris LeDoux	F-23	Yes			
Martin Orona	F-24				
Richard Kline	F-9	Yes			
John Gale	F-26				
Mark Ditzel	F-27	No			
7. Enforcement Operations					
a) Protect the public interest including the protection of resources and improvements on National Forest System lands, the allocation of space among potential or existing uses and activities, and public health and safety concerns. b) Patrol and maintain safety on Allegheny Forest Roads within and adjacent to the Non-Commercial Group Use Event Area. c) Check developed recreation areas, dispersed campsites and administrative sites on the district during your patrols.					
8. Special Instructions					
a) LEOs complete all paperwork and turn over to Division Supervisor at the end of shift. b) Collect and disseminate information on participant numbers, specific camp locations, water use, and significant movements of people. c) Monitor all district employees performing duties within the gathering area. d) GPS, video and take digital pictures of existing and potential resource impact areas within the Gathering. Submit this information over to the SUP/ Resource Advisor.					
Prepared By (Resource Unit Leader)		Approved By (Planning Section Chief)		Date	Time
		/s/ Don Palmer		6/19/2010	1400

DIVISION ASSIGNMENT LIST		1. Branch Law Enforcement		2. Division/Group Evening Shift	
3. Incident Name 2010 National Rainbow Family Gathering		4. Operational Period June 20, 2010 Date: Until Amended Time: 1200-2400			
5. Operations Personnel					
Incident Commander	Gene Smithson F-1	Division Supervisors		Chad Krogstad F-6 (K9)	
Operations Chief	Aban Lucero F-2/Steve Burd F-2	Criminal Investigator		Lucas Woolf F-3, Bill Mickle F-4	
6. Resources Assigned This Period					
Assigned Resources	Call Sign	K9 Unit			
David Chavez	F-16				
Jennifer "Red" Taylor	F-19	Yes			
Erik Kim	F-17				
Lathan Sidebottom	F-18	Yes			
Nick Roe	F-15				
Bain Bannon	F-20	No			
7. Enforcement Operations					
a) Protect the public interest including the protection of resources and improvements on National Forest System lands, the allocation of space among potential or existing uses and activities, and public health and safety concerns.					
b) Patrol and maintain safety on Allegheny Forest Roads within and adjacent to the Non-Commercial Group Use Event Area.					
c) Check developed recreation areas, dispersed campsites and administrative sites on the district during your patrols.					
8. Special Instructions					
a) Conduct daily vehicle counts (1600-1800 hours) and submit to LE Ops at the end of shift.					
b) LEOs complete all paperwork and turn over to Division Supervisor at the end of shift.					
c) Collect and disseminate information on participant numbers, specific camp locations, water use, and significant movements of people.					
d) Monitor all district employees performing duties within the gathering area.					
e) GPS, video and take digital pictures of existing and potential resource impact areas within the Gathering. Submit this information over to the SUP/ Resource Advisor					
Prepared By (Resource Unit Leader)		Approved By (Planning Section Chief)		Date	Time
		/s/ Don Palmer		6/19/2010	1500

DIVISION ASSIGNMENT LIST		1. Branch Law Enforcement		2. Division/Group Mounted Unit	
3. Incident Name 2010 National Rainbow Family Gathering		4. Operational Period June 19, 2010 Date: Until Amended Time: 0800-2000			
5. Operations Personnel					
Incident Commander	Gene Smithson F-1	Division Supervisors		Cathy VanCamp F-8	
Operations Chief	Aban Lucero/Steve Burd F-2	Criminal Investigator		Lucas Woolf F-3, Bill Mickle F-4	
6. Resources Assigned This Period					
Assigned Resources	Call Sign	K9 Unit			
Forrest Tellock	F-29	No			
Mike Seawall	F-30	No			
Weldon Young	F-31	No			
7. Enforcement Operations <ul style="list-style-type: none"> a) Protect the public interest including the protection of resources and improvements on National Forest System lands, the allocation of space among potential or existing uses and activities, and public health and safety concerns. b) Provide assistance to resource teams with GPS mapping. c) Recon the area in and around the gathering site to become more familiar with the terrain, trails and specific locations of Camps, Kitchens and other high use areas. d) Provide support to Resource Advisors, Special Use Administrators and forest personnel visiting the gathering area as requested. 					
8. Special Instructions <ul style="list-style-type: none"> a) LEOs complete all paperwork and turn over to Division Supervisor at the end of shift. b) Collect and disseminate information on participant numbers, specific camp locations, water use, and significant movements of people. c) Monitor all district employees performing duties within the gathering area. d) GPS, video and take digital pictures of existing and potential resource impact areas within the Gathering. Submit this information over to the SUP/ Resource Advisor. 					
Prepared By (Resource Unit Leader)		Approved By (Planning Section Chief)		Date	Time
		/s/ Don Palmer		6/19/2010	1400

Radio Call Signs for Incident (6/20/10)

GENE SMITHSON (Incident Commander)	F-1
ABAN LUCERO/Steve BURD (Operations Chief)	F-2
LUCAS WOOLF (Incident Investigator)	F-3
Bill MICKLE (Incident Investigator)	F-4
Mark HEITZMAN (Day Shift Supervisor) K9	F-5
Chad KROGSTAD (Evening Shift Supervisor) K9	F-6
Chuck HUMPHREY (Night Shift Supervisor)	F-7
Cathy VANCAMP (Mounted Unit Supervisor)	F-8
Richard KLINE K9	F-9
Ken SEYMORE	F-10
James WILLET K9	F-11
Robert GYDUS	F-12
Derik BREEDLOVE	F-13
Roni ETHERIDGE	F-14
Nick ROE	F-15
David CHAVEZ K9	F-16
Erik KIM K9	F-17
Lathan SIDEBOTTOM	F-18
Jennifer "Red" TAYLOR	F-19
Bain BANNON	F-20
Mark MAGALES	F-21
Luke JOHNSON K9	F-22
Chris LE DOUX	F-23
Martin ORONA	F-24
Steve TCHALEMIAN	F-25
John GALE	F-26
Mark DITZEL	F-27
Rebecca SWANEY	F-28
Forrest TELLOCK	F-29
Mike SEAWALL	F-30
Weldon YOUNG	F-31
CHRIS REYNOLDS (Communications Unit Leader)	F-32
Leanne MARTEN	F-33
Tony SCARDINA	F-34
Marcia ROSE-RITCHIE	F-35
Rebecca ROOF	F-36
Bob BECKLEY	F-37
Dave COTTERMAN	F-38
George FUSCO	F-39
Gary GIGER	F-40
Joe GOMOLA	F-41
Andrew BLACK	F-42

SAFETY & HEALTH
2010 RAINBOW FAMILY GATHERING
June 24, 2010
Allegheny National Forest

Keep up the safe driving, clean windshields, limit speed to the road conditions & situation. Always lookout for the other drivers and be prepared for the unexpected. Be cognizant of the increased dust on the unpaved roads and foggy conditions in the early morning hours. Drive with your lights on. Wear your safety belts. Keep up on your vehicle maintenance. Watch out for animals and people.

Ensure you hydrate often due to the increased temperatures and humidity levels. Take breaks to cool down often and ensure you stop and nourish yourself.

Use good Officer Safety and Officer Survival Skills, remember weapons retention when out of your vehicle.

Use gloves & germ killing skin gel. Watch out for sharp objects & needles. Properly dispose of all biohazard items in red biohazards bags or sharps containers.

Arrest and transport by Forest Service policy. After transport, spray and clean your patrol vehicle with Lysol or decontamination wipes.

Communicate plans with your partner, and other L.E. units in the area. Officer Safety comes first.

Support and assist other L.E. agencies as needed, such as Vehicle Stops, etc.

Beware of all dogs. Look where you walk. Parvo virus is contagious. Decontaminate your field boots as needed.

L.E. units try to assist resource people when in the area. Provide cover for them as needed. Have them check in and out with you if they are walking in the area.

Resource Personnel: Must be in radio contact, check in and out. Communicate with LEO's. Always and only work in pairs. Always be aware of your surroundings, leave if you feel unsafe or unsure. Have an on going escape route.

Please follow all safety procedures
&
Have a good shift



June 20, 2010

EMERGENCY PHONE NUMBERS

Hospitals

Warren General Hospital

2 Crescent Park West

P O Box 68

Warren PA 16365*0068

814-723-3300

www.wgh.org

Kane Community Hospital

4372 Route 6

Kane, PA 16375

814-837-8585

www.kanehosp.com

Elk Regional Health Systems

763 Johnsonburg Rd.

St. Marys, PA 15857

814-788-8000

www.elkregional.org

Med Express Clinic

Ridgeway Health Campus

104 Metoxet St.

Ridgway, PA 15853

814-788-5555

Hours 9am-7pm daily; closed holidays

Titusville Area Hospital

406 W. Oak Street

Titusville, PA 16354

814- 827-1851 or 1-800-950-1851

www.titusvillehospital.org

Warren State Hospital- Mental Hospital

33 Main Drive

North Warren, PA 16365

814-723-5500

Deerfield Behavioral Health of Warren

Warren General Hospital

Warren, PA 16365

814-723-3300

Veterinarians

Kinzua Veterinary Clinic

2029 Pennsylvania Avenue, East

Warren, PA 16365

814-726-9720

Contact: Blayne Bergenstock and Adam Miller, VMD's

Russell Veterinary Hospital, PC

1276 Route 957

Russell, PA 16345

814-757-5440

Contact: Patrick Farrell, Brooke Imus and Jennifer Malarchik, DVM's

Warren Veterinary

21870 Route 6

Warren, PA 16365

814-723-7123

Contact: Dr. Kent Wiggers

Pine Haven Veterinary Clinic

101 Pine Haven Drive

Kane, PA 16735

814-837-7929

Contact: Dr. Laura Stanish

Northwest PA Pet Emergency Center

429 West 38th Street

Erie, PA 16508

814-866-5920

www.eriepetemergency.com

Pennsylvania Department of Health Points of Contacts

Warren County State Health Center

2027 Pennsylvania Ave., East

Warren, PA 16365

814-728-3566

Community Health Nurses:

Barbara White, B.S., R.N., C

bwhite@state.pa.us

Cheryl Burton, RN, BSN

cburton@state.pa.us

Dennis Fapore

District Executive Director

724-662-6068

Peggy Baxter

District Nurse Administrator

Chad Rittle

District Epidemiology Manager

EMS Council County Contacts

Clarion, Crawford, Forest, Mercer, Venango, Warren
EMMCO West, Inc.
Meadville, PA 16335
Phone: 814-337-5380
Fax: 814-337-0871

Cameron, Clearfield, Elk, Jefferson, McKean
EMMCO East, Inc.
1411 Million Dollar Highway
Kersey, PA 15846
Phone: (814) 834-9212
Fax: (814) 781-3881

Federal Emergency Management Agency (FEMA)

Regional Mailing Address Federal Emergency Management Agency
615 Chestnut Street
1 Independence Mall, sixth floor
Philadelphia, PA 19106-4404
Main Regional Number: (215) 931-5608 or 1(800) 621-FEMA (3362)

Pennsylvania Emergency Management Agency (PEMA)

Pennsylvania Emergency Management Agency
2605 Interstate Drive
Harrisburg, PA 17110-9463
Phone: (717) 651-2001
Fax: (717) 651-2040
www.pema.state.pa.us

County Emergency Management Coordinators

Warren County
Todd Lake
100 Dillion Drive, Suite 203
Younsville, 16371
Office: 814-563-7081
Fax: 814-563-7232
tlake@warren-county.net

Forest County
Stephen E Hale
PO Box 217
Tionesta, 16353
Phone: (814) 755-3541
Fax: (814) 755-4404
shale@co.forest.pa.us

Pennsylvania Emergency Management Agency Western Region Office
276 Stormer Road
Indiana, PA 15701-8933
Phone: (724) 357-2990 or (800) 972-7362
Fax: (724) 357-2992 or (724) 349-5250

Warren County Local Contact Numbers

Emergency Management System/Agency (EMS/ EMA)
Phone: (814) 563-2220

Warren County 911 Center
Phone: (814) 563-3500 (Non-Emergency)

Department of Human Services
Phone: (814) 726-2100

Department of Environmental Protection
Phone: (814) 723-3273

Department of Agriculture
Phone: (814) 332-6890

Dog Warden (Amy Tyger)
Bureau of Dog Law Enforcement
13410 Dunham Road
Meadville, PA 16335-8313
Phone: (814) 837-7813

Law Enforcement
State Police: (814) 728-3600
Sheriff/Jail: (814) 723-7553
City Police: (814) 723-2700
Conewango Township Police: (814) 726-0725

Northwest District Office
Phone: (724) 662-6068 or (877) 724-3258

County Control 911 Warren
Phone: (814) 723-7100

Volunteer Fire Departments

Sheffield (814) 968-5511
Tidioute (814) 484-3555
East Hickory (814) 755-3200
West Hickory (814) 463-7757
Pleasant (814) 726-3230
Cherry Grove (814) 968-3511

RAINBOW GATHERING EVENT
SCENE VISITATION GUIDELINES FOR NON-LAW ENFORCEMENT INCIDENT WORKERS
6/17/2010

GOAL: Provide for safe, coordinated visits by non-law enforcement incident workers. Provide communications and a check-in and out process for non-law enforcement workers so they can be tracked and located in a timely and effective manner.

RECOMMENDED PROCEDURES:

Check in at the ICP (Incident Command Post). On your first visit you will be provided a Health and Safety briefing and/or a written copy of recommended site visitation protocol. If needed, you will also be assigned a portable radio. Information about radio use or special instructions for scene visits for the day will also be provided as needed.

ALL VISITORS WILL BE PAIRED UP, AND NO ONE IS ALLOWED TO VISIT THE SITE ALONE. EMPLOYEES SHOULD BE IN UNIFORM OR IDENTIFIABLE AS FOREST SERVICE EMPLOYEES.

Monitor radio traffic when driving to the gathering site.

When you arrive at the gathering contact the law enforcement Division Supervisor in charge. The Division Supervisor will provide you with site specific and situational instructions. Tell the Division Supervisor the purpose and expected duration of your visit. Vehicles should be parked in a secure and visible location. If you are unsure of where to park, ask for assistance from law enforcement. Always lock your vehicle and secure property.

When you are at the site and are out of your vehicle, contact Division Supervisor and advise them how long you expect to be out on foot. Make radio contact with Division Supervisor at a minimum of every 60-minutes; more frequently if you feel the need to shorten that interval. At check-ins advise the Division Supervisor of your approximate location. Use common sense when making radio calls or monitoring radio traffic especially in large groups of gathering participants.

Advise the Division Supervisor of any changes in the expected duration of your visit.

Advise the Division Supervisor when you return to your vehicle and relay that you are returning to ICP (or the location where you are departing to).

If applicable, check your assigned radio back into the ICP.

BE AWARE THAT TRAFFIC CONGESTION WILL OFTEN PRESENT A MAJOR PROBLEM PROCEEDING INTO AND OUT OF THE EVENT AREA.

BE ESPECIALLY ALERT IF A SITUATION BEGINS TO DEVELOP THAT MIGHT RESULT IN THE NEED FOR AN EVACUATION

INCIDENT RADIO COMMUNICATIONS PLAN				1. Incident Name 2010 RAINBOW	2. Date/Time Prepared 6/25/10	3. Operational Period Date/Time June 26, 2010 until amended
4. Basic Radio Channel Utilization						
Radio Type/Cache	Channel	Function	Frequency/Tone	Assignment	Remarks	
VHF	1	LE DIRECT			LEO CAR TO CAR	
VHF	2	FS WATS DISP			LEO DISPATCH WITH WARREN CO.	
VHF	3	NATIONAL			LINK TO STATE PATROL	
VHF	4	EC911			ELK COUNTY CONTROL	
VHF	5	INTERAGENCY			Link to LEO (ch 2)	
VHF	6	WC911 WATSON			WARREN COUNTY WATSON REPEATER	
VHF	7	WC911 SHEFFIELD			WARREN COUNTY SHEFFIELD REPEATER	
VHF	8	WARREN PD			WARREN POLICE DEPARTMENT	
5. Prepared by (Communications Unit) CHRIS REYNOLDS						

INCIDENT RADIO COMMUNICATIONS PLAN				1. Incident Name 2010 RAINBOW	2. Date/Time Prepared 6/25/10	3. Operational Period Date/Time June 26, 2010 until amended
4. Basic Radio Channel Utilization						
Radio Type/Cache	Channel	Function	Frequency/Tone	Assignment	Remarks	
VHF	9	FOREST COUNTY			FOREST COUNTY DISPATCH	
VHF	10	FS DIRECT			FOREST CAR TO CAR	
VHF	11	FS SENECA			FOREST REPEATER	
VHF	12	FS WATSON			FOREST REPEATER	
VHF	13	FS HIGHLAND			FOREST REPEATER	
VHF	14	FS TIONESTA			FOREST REPEATER	
VHF	15	PSP TAC1			STATE PATROL CAR TO CAR	
VHF	16	PSP TAC2			STATE PATROL CAR TO CAR	
5. Prepared by (Communications Unit) CHRIS REYNOLDS						

2010 RAINBOW GATHERING
Bradford Ranger District
Allegheny National Forest

Internal Use Only



Legend

- ▲ Pit
- Existing Well
- Opening
- ▨ Municipal Road
- ▩ Forest Road
- ▬ Unknown Road
- ▬ Forest Trail
- ▬ Stream
- ▬ Utilities
- ▨ Waterbody
- ▨ Forest Service Ownership
- ▨ Non-Forest Service Ownership

Allegheny, Enterprise, Inc. (AEI)

Clint Stout

814-715-4102

A&S Productions (A&S)

Dave Schrader

814-463-9310

B&B Resources (B&B)

Al Baldensperger

814-723-6824

Catalyst Energy, Inc. (Catalyst)

Bill Rodgers

724-779-9040 x215

03 Gas Ltd. (03 Gas)

Bruce Raber

814-730-2433

Ralph Albright Drilling (RAD)

OUT OF BUSINESS

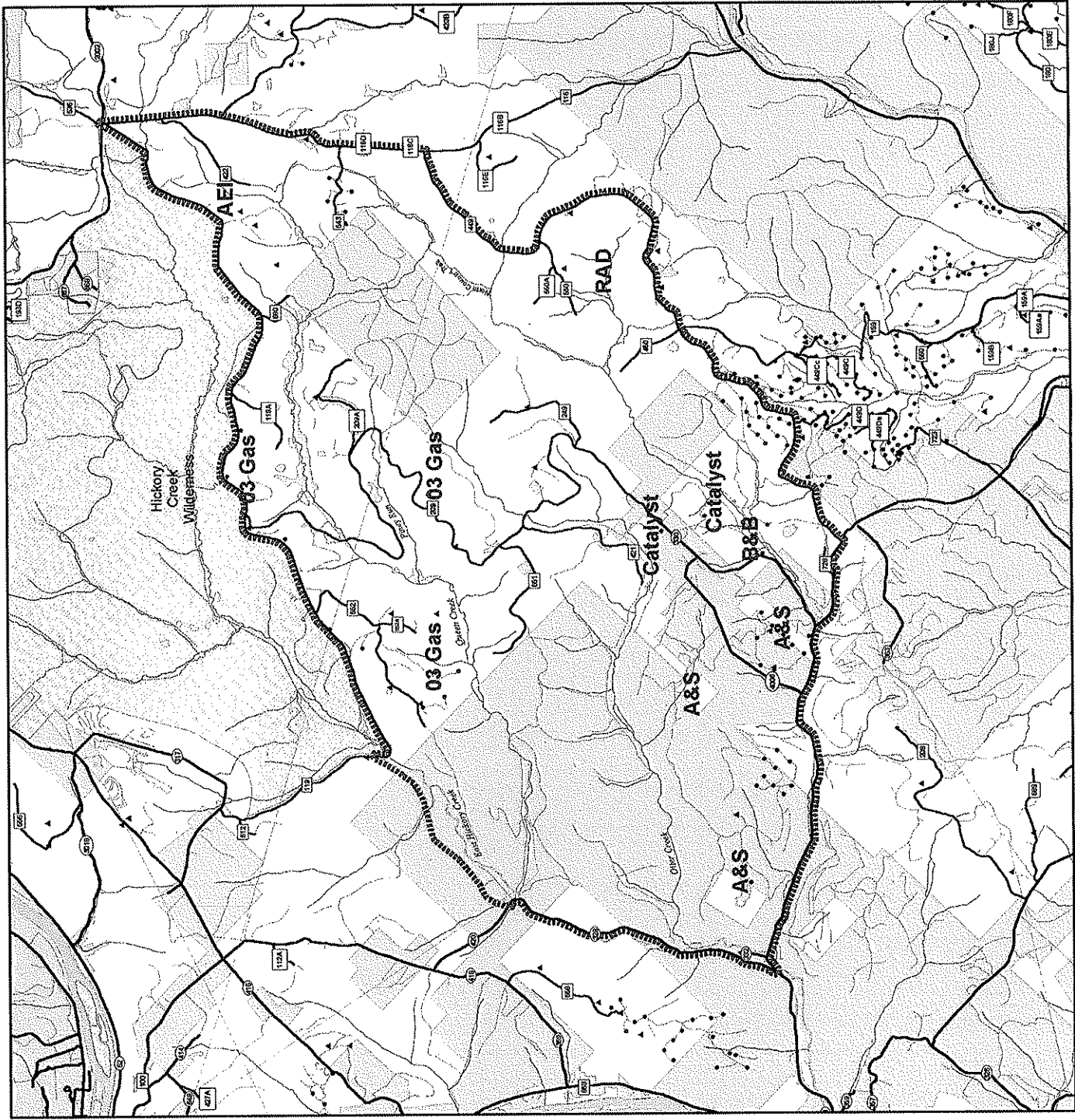
1:75,000

NAD 1983, UTM Zone 17N



AKG/S 9.3.1
 06-02-2010, AK
 06-18-2010, MJD

2010 RAINBOW GATHERING is a preliminary map and should not be used for legal purposes. It is intended for internal use only.





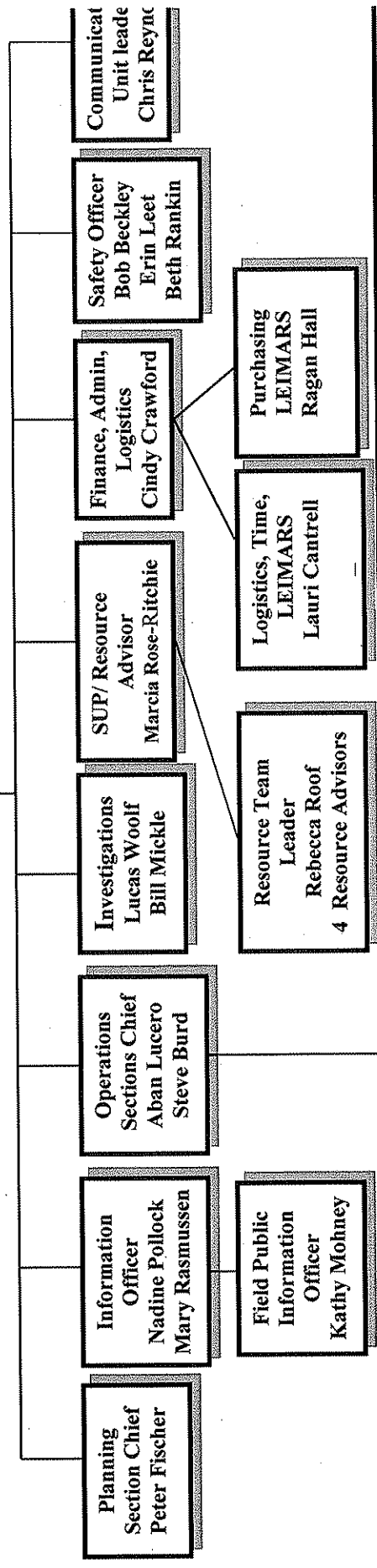
2010 National Incident Management Team Organization 6/24/10



Special Agent in Charge
Rich Glodowski

Leanne Marten, Forest Supervisor
Agency Administrator

Incident Commander
Gene Smithson
Tony Scardina



- Incident Command Agency Representatives**
- * Conewango Township PD, Jerry Falconer, Chief
 - * Elk County Sherriff, Jeff Krieg, Sheriff
 - * Elk County 911 and EMA, Mike McAllister, Director
 - * Forest County Sheriff, Robert Wolfgang, Sheriff
 - * Pennsylvania State Police, Capt. Mark Schau
 - * Ridgeway PD, Shawn Greci, Senior Office
 - * Warren County Sheriff, Ken Klakamp, Chief Deputy
 - * Warren County Distict Attorney's Office and DTF, John Herzog, County Detective
 - * Warren City PD, Ray Zydoulik, Chief
 - * Warren County 911 and EMA, Terry Carlson, Deputy Direc

