

**2008 National Rainbow Family Gathering Incident Action Plan
Bridger-Teton National Forest
Pinedale Ranger District
June 25, 2008 until amended
0001-2400**

A stylized black and white line drawing of a mountain range. The range features a prominent central peak and several smaller peaks to the left and right. The mountains are rendered with simple outlines and some shading to suggest depth and texture.

National Incident Management Team

INCIDENT OBJECTIVES ICS-202	1. INCIDENT NAME 2008 National Rainbow Family Gathering Ozark National Forest	2. DATE PREPARED June 24, 2008	3. TIME PREPARED 0700		
4. OPERATIONAL PERIOD (DATE/TIME) June 25, 2008 0001-2400					
5. Incident Objectives 1. Ensure that the safety of employees, assigned personnel, the public, and event participants are considered throughout the course of the event, 2. Establish and maintain internal and external communications and relationships with cooperating agencies, federal, tribal, state and local government officials, private landowners, permittees, local businesses, communities, and the Rainbow Family, 3. Protect resources and coordinate rehabilitation, 4. Manage this event proactively as a noncommercial group use activity consistent with the direction of the Under Secretary of Agriculture. This direction will attempt an alternative approach of not requiring a noncommercial group use permit provided that a mutually agreed upon operating plan is developed and followed by the Rainbow Family.					
6. WEATHER FORECAST FOR OPERATIONAL PERIOD Temp: High 89, Low 50. 30% Chance of Precipitation. Wind SW12-15 MPH. Humidity Max 41%					
7. GENERAL/SAFETY MESSAGE: <p style="text-align: center;">See Attached Safety Message</p>					
8. ATTACHMENTS (CHECK IF ATTACHED) <table style="width: 100%; border: none;"> <tr> <td style="width: 50%; vertical-align: top;"> X ORGANIZATION LIST (ICS 203) AND ORG CHART X DIVISION ASSIGNMENT LISTS (ICS 204) COMMUNICATIONS PLAN (ICS 205) MEDICAL PLAN (ICS 206) X SAFETY MESSAGE </td> <td style="width: 50%; vertical-align: top;"> WEATHER FORECAST PHONE/ CONTACT LISTS RAINBOW INTERNAL UPDATE OPERATION AND MAINTENANCE PLAN INCIDENT MAPS (Pick up at County ICP) </td> </tr> </table>				X ORGANIZATION LIST (ICS 203) AND ORG CHART X DIVISION ASSIGNMENT LISTS (ICS 204) COMMUNICATIONS PLAN (ICS 205) MEDICAL PLAN (ICS 206) X SAFETY MESSAGE	WEATHER FORECAST PHONE/ CONTACT LISTS RAINBOW INTERNAL UPDATE OPERATION AND MAINTENANCE PLAN INCIDENT MAPS (Pick up at County ICP)
X ORGANIZATION LIST (ICS 203) AND ORG CHART X DIVISION ASSIGNMENT LISTS (ICS 204) COMMUNICATIONS PLAN (ICS 205) MEDICAL PLAN (ICS 206) X SAFETY MESSAGE	WEATHER FORECAST PHONE/ CONTACT LISTS RAINBOW INTERNAL UPDATE OPERATION AND MAINTENANCE PLAN INCIDENT MAPS (Pick up at County ICP)				
8. PREPARED BY Tom Florich	10. APPROVED BY (INCIDENT COMMANDER) Gene Smithson				

DIVISION ASSIGNMENT LIST	1. Branch	2. Division/Group Day Shift 1
---------------------------------	-----------	---

3. Incident Name 2008 National Rainbow Family Gathering	4. Operational Period June 25, 2008 Date: _____ Time: 0800 - 2000
---	---

5. Operations Personnel			
Operations Chief	James Alford F-2	Division/Group	Chris Crain
Investigator	Pat Finnegan F-4	Deputy Division Supervisor	

6. Resources Assigned This Period				
Patrol	Team	Number Persons	K-9	
F-4 / F -27	Crain/Baine	2	No	
F-20 / F-12	Page/Deane	2	Yes	
F-7 / F-17	Acosta/Lampe	2	Yes	
F-21 / F-26	Rainville/Wheeler	2	No	

7. Incident Operations

A. Officers will attend daily briefing with BLM at on-sight ICP
B. Assist Resource Advisors, Bureau of Land Management, and local EMS and County Health Officials as requested.
C. Assure that all roads remain open and accessible for participant egress and law enforcement, resource and EMS vehicles. Issue warnings, violation notices, or have vehicles towed as the situation warrants.
D. Conduct vehicle and foot patrols through the gathering as needed.

8. Special Considerations

A. Photograph and document all violations and incidents,
B All Violation Notices are collateral forfeiture.
C. All Fire and Medical emergencies need to go thru Teton Dispatch thru the Muddy Ridge Repeater (307-739-3301).

9. Division/Group Communication Summary							
Function	Frequency	System	Channel	Function	Frequency	System	Channel
Command	See Comm Plan			Logistics			
Tactical Div/Group				Air to Ground			

Prepared By (Resource Unit Leader)	Approved By (Incident Commander) /s/ Gene Smithson	Date 6/24/2008	Time 1815
------------------------------------	--	--------------------------	---------------------

DIVISION ASSIGNMENT LIST

1. Branch

2. Division/Group

BLM Day Shift

3. Incident Name

4. Operational Period

June 25, 2008

2008 National Rainbow Family Gathering

Date: until amended

Time: 0700 - 1900

5. Operations Personnel

Operations Chief **Perry McCoy**

Division/Group Supervisor

Shane Wasem

Investigator **Mike Miller**

Deputy Division Supervisor

6. Resources Assigned This Period

Patrol	Team	Number Persons	K-9
R-11	Aaron Kania	1	No
R-91	David Gibbins	1	No
R-41	Chris Locker	1	No

7. Incident Operations

- A. Officers will attend daily briefing with Forest Service at on-sight ICP**
- B. Assist Resource Advisors, Forest Service, and local EMS and County Health Officials as requested.**
- C. Assure that all roads remain open and accessible for participant egress and law enforcement, resource and EMS vehicles. Issue warnings, violation notices, or have vehicles towed as the situation warrants.**
- D. Conduct vehicle and foot patrols through the gathering as needed.**

8. Special Considerations

- A. Photograph and document all violations and incidents,**
- B All Violation Notices are collateral forfeiture.**
- C. All Fire and Medical emergencies need to go thru Teton Dispatch thru the Muddy Ridge Repeater (307-739-3301).**

9. Division/Group Communication Summary

Function	Frequency	System	Channel	Function	Frequency	System	Channel
Command	See Comm	Plan		Logistics			
Tactical Div/Group				Air to Ground			

Prepared By (Resource Unit Leader)

Approved By (Incident Commander)

Date

Time

/s/ Gene Smithson/Fred Hurlock

6/19/2008

1815

DIVISION ASSIGNMENT LIST

1. Branch

2. Division/Group

Evening Shift 2

3. Incident Name

2008 National Rainbow Family Gathering

4. Operational Period

June 25, 2008

Date:

Time: 1200 - 2400

5. Operations Personnel

Operations Chief **James Alford F-2**

Division/Group Supervisor

Chad Krogstad

Investigator **Pat Finnegan F-3**

Deputy Division Supervisor

6. Resources Assigned This Period

Patrol	Team	Number Persons	K-9
F-5 / F-25	Krogstad/Harvey	2	Yes
F-16	Knox	1	Yes
F-19 / F-11	Oropeza/Knorr	2	No
F-9 / F-28	Book/Orona	2	No
F-24 / F-22	Wubben/Taylor	2	No

7. Incident Operations

- A. Officers will attend daily briefing with BLM at on-sight ICP**
- B. Assist Resource Advisors, Bureau of Land Management, and local EMS and County Health Officials as requested.**
- C. Assure that all roads remain open and accessible for participant egress and law enforcement, resource and EMS vehicles. Issue warnings, violation notices, or have vehicles towed as the situation warrants.**
- D. Conduct vehicle and foot patrols through the gathering as needed.**

8. Special Considerations

- A. Photograph and document all violations and incidents,**
- B All Violation Notices are collateral forfeiture.**
- C. All Fire and Medical emergencies need to go thru Teton Dispatch thru the Muddy Ridge Repeater (307-739-3301).**

9. Division/Group Communication Summary

Function	Frequency	System	Channel	Function	Frequency	System	Channel
Command	See Comm	Plan		Logistics			
Tactical Div/Group				Air to Ground			

Prepared By (Resource Unit Leader)

Approved By (Incident Commander)

Date

Time

/s/ Gene Smithson

6/24/2008

1815

DIVISION ASSIGNMENT LIST

1. Branch

2. Division/Group

BLM Night Shift

3. Incident Name

4. Operational Period

June 25, 2008

2008 National Rainbow Family Gathering

Date:

Time: 1000 - 2200

5. Operations Personnel

Operations Chief **Perry McCoy**

Division/Group Supervisor

Mike Seawall

Investigator **Mike Miller**

Deputy Division Supervisor

6. Resources Assigned This Period

Patrol	Team	Number Persons	K-9
R-21	Trampus Barhaug	1	No
R-61	John Weiner	1	No
R-42	Don Miller	1	No

7. Incident Operations

- A. Officers will attend daily briefing with Forest Service at on-sight ICP**
- B. Assist Resource Advisors, Forest Service, and local EMS and County Health Officials as requested.**
- C. Assure that all roads remain open and accessible for participant egress and law enforcement, resource and EMS vehicles. Issue warnings, violation notices, or have vehicles towed as the situation warrants.**
- D. Conduct vehicle and foot patrols through the gathering as needed.**

8. Special Considerations

- A. Photograph and document all violations and incidents,**
- B All Violation Notices are collateral forfeiture.**
- C. All Fire and Medical emergencies need to go thru Teton Dispatch thru the Muddy Ridge Repeater (307-739-3301).**

9. Division/Group Communication Summary

Function	Frequency	System	Channel	Function	Frequency	System	Channel
Command	See Comm	Plan		Logistics			
Tactical Div/Group				Air to Ground			

Prepared By (Resource Unit Leader)

Approved By (Incident Commander)

Date

Time

/s/ Gene Smithson/Fred Hurlock

6/24/2008

1815

DIVISION ASSIGNMENT LIST				1. Branch		2. Division/Group Night Shift 3	
3. Incident Name 2008 National Rainbow Family Gathering				4. Operational Period June 25, 2008 Date: _____ Time: 2400 - 1200			
5. Operations Personnel							
Operations Chief		James Alford F-2		Division/Group Supervisor		Cathy VanCamp	
Investigator		Pat Finnegan F-3		Deputy Division Supervisor			
6. Resources Assigned This Period							
Patrol		Team		Number Persons	K-9		
F-6 / F-14		VanCamp/Holland		2	No		
F-23 / F-13		Whitworth/Hart		2	Yes		
F-10 / F-8		Chavez/Bennett		2	Yes		
F-18 / F-15		Madrid/Kalna		2	No		
7. Incident Operations							
<p>A. Officers will attend daily briefing with BLM at on-sight ICP</p> <p>B. Assist Resource Advisors, Bureau of Land Management, and local EMS and County Health Officials as requested.</p> <p>C. Assure that all roads remain open and accessible for participant egress and law enforcement, resource and EMS vehicles. Issue warnings, violation notices, or have vehicles towed as the situation warrants.</p> <p>D. Conduct vehicle and foot patrols through the gathering as needed.</p>							
8. Special Considerations							
<p>A. Photograph and document all violations and incidents,</p> <p>B All Violation Notices are collateral forfeiture.</p> <p>C. All Fire and Medical emergencies need to go thru Teton Dispatch thru the Muddy Ridge Repeater (307-739-3301).</p>							
9. Division/Group Communication Summary							
Function	Frequency	System	Channel	Function	Frequency	System	Channel
Command	See Comm	Plan		Logistics			
Tactical Div/Group				Air to Ground			
Prepared By (Resource Unit Leader)			Approved By (Incident Commander)			Date	Time
			/s/ Gene Smithson			6/24/2008	1815

ORGANIZATION ASSIGNMENT LIST		Division Supervisor:	Chris Craine	
1. Incident Name		Bureau of Land Management	Shane Wasem	
2008 National Rainbow Family Gathering, Bridger-Teton National Forest, Dutch Joe Area		Patrol 4/27	Craine	Baine
2. Date: June 25, 2008		Patrol F-20/ F-12	Page	Deane (K-9)
3. Time: 0001-2400		Patrol F-7/ F-17	Acosta	Lampe (K-9)
4. Operational Period: 0001-2400		Patrol F-21/ F-26	Rainville	Wheeler
Position		Aaron Kania - BLM R-11		
Name		David Gibbins - BLM R-91		
5. Incident Commander and Staff		Chris Locker - BLM R-41		
Incident Commander	Gene Smithson, F-1	Shane Wasem - BLM R-71		
Deputy	Fred Hurlock A-92	b. Day 2 Division		
Safety Officer	Bob Beckley	Division Supervisor	Chad Krogstad	
Information Officer	Rita Vollmer	Bureau of Land Management	Mike Seawall	
Investigator	Patrick Finnegan, F-4/Mike Miller A-91	Patrol F-5/ F-25	Krogstad (K-9)	Harvey
6. Agency Representative		Patrol F-16	Knox (K-9)	
Agency	Name	Patrol F-19/ F-11	Oropeza	Knorr
Forest Supervisor	Kniffy Hamilton	Patrol F-9/ F-28	Book	Orona
District Ranger	Tom Peters	Patrol F-24/F-22	Wubben	Taylor
7. Planning Section		Trampus Barhaug - BLM R-21		
Chief		John Weiner - BLM R-61		
Natural Resources Unit Leader	Tom Florich	Don Miller - BLM R-42		
Natural Resource Technical Specialists (Note: Not all Resource Specialists are working all days)	Rebecca Roof, Ematura Agyapong, Marcus Mobley	Mike Seawall - BLM R-51		
8. Communications Unit		c. Day 3 Division		
Unit Leader	Larry Garrett	Division Supervisor,	Cathy VanCamp	
Communications Technician		Patrol F6/ F-14	VanCamp	Holland
9. Administration Section		Patrol F-23/ F-13	Whitworth (K-9)	Hart
Chief	Cindy Crawford	Patrol F-10/ F-8	Chavez (K-9)	Bennett
Purchasing/ LEIMARS	Mary Willems	Patrol F-18/ F-15	Madrid	Kalna
Purchasing/ LEIMARS				
Time/ LEIMARS	Ragan Hall	Prepared by (Resource Unit Leader) Tom Florich, 6/23/08		
10.				
11. Operations Section				
Chief	James Alford, F-2/Perry McCoy R-1			
a. Day 1 Shift Division				

INCIDENT RADIO COMMUNICATIONS PLAN

1. Incident Name
Rainbow Gathering

2. Date/Time Prepared

3. Operational Period Date/Time

4. BASIC RADIO CHANNEL UTILIZATION

Radio Type/Cache	Channel	Function	Frequency/Tone	Assignment	Remarks
King NIFC Narrowband	1	C - 14	RX 167.250 TX 162.2625	NIFC Repeater	
King NIFC Narrowband	2	C - 13	RX 167.0875 TX 162.0875	NIFC Repeater	
King NIFC Narrowband	3	LE SIMP	RX 168.025 TX 168.025	Forest Service Law Enforcement Simplex	
King NIFC Narrowband	4	BLM LE	RX 169.700 TX 169.700	BLM Law Enforcement Simplex	
King NIFC Narrowband	5	SALECS 2	RX 155.640 TX 154.740 T 100.0	Aspen Ridge	
King NIFC Narrowband	6	SALECS 5	RX 155.640 TX 154.740 T 146.2	Oyster Ridge	
King NIFC Narrowband	7	SALECS 6	RX 155.640 TX 159.800 T 156.7	Copper Mtn	
King NIFC Narrowband	8	SCLECS 8	RX 155.640 TX 159.180 T 173.8	Law Mutual Aid for Wyoming	
King NIFC Narrowband	9	FERN	RX 154.280 TX 154.280	Fire Emergency Radio Network	
King NIFC Narrowband	10	SUB SO	RX 155.730 TX 155.250 T 107.2	Sublette County SO	
King NIFC Narrowband	11	FRE SO	RX 155.565 TX 154.710 T 100.0	Fremont County SO Lime Stone	
King NIFC Narrowband	12	LMA	RX 154.875 TX 154.875	BLM Admin	
King NIFC Narrowband	13	BLM HOGS	RX 168.575 TX 165.000 T 110.9	BLM Admin Repeater	
King NIFC Narrowband	14	FS MUDDY	RX 166.225 TX 169.900 T 136.5	Forest Service South Zone Portable Repeater	
King NIFC Narrowband	15	WEATHER	RX 162.475 TX	Weather	
King NIFC Narrowband	16	AIR GUAR	RX 168.625 TX 168.625 T 110.9	Air Guard	

5. Prepared By (Communications Unit)

Larry Garrett (COML)

ICS 205

NFS 1330

MAP A

2764

Upper/Lower Dutch Joe
boundary fence # 728003
approximately 1.5 miles

allotment boundary

Log worm fence
continues to north

Wilderness Boundary

Upper Dutch Joe

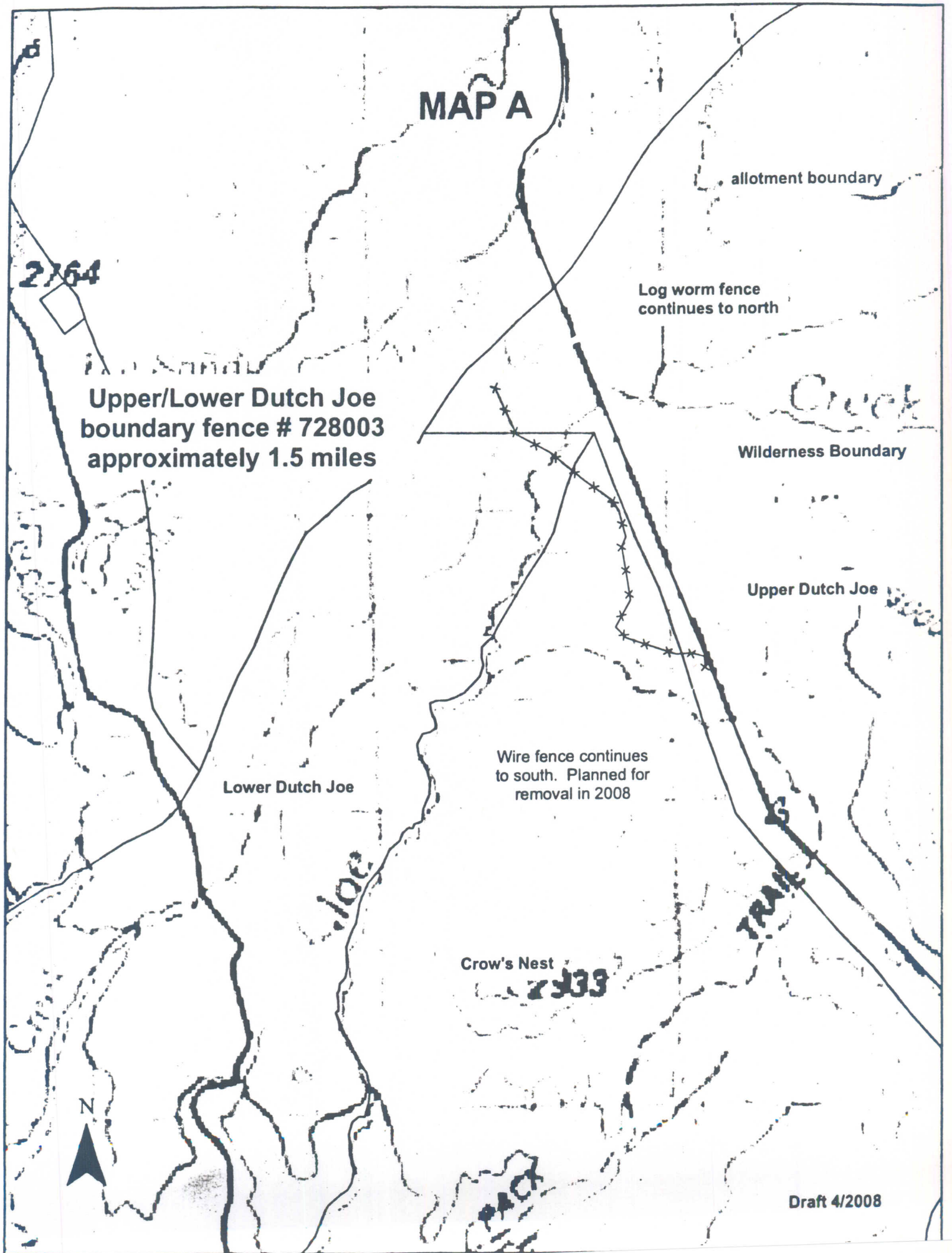
Lower Dutch Joe

Wire fence continues
to south. Planned for
removal in 2008

Crow's Nest

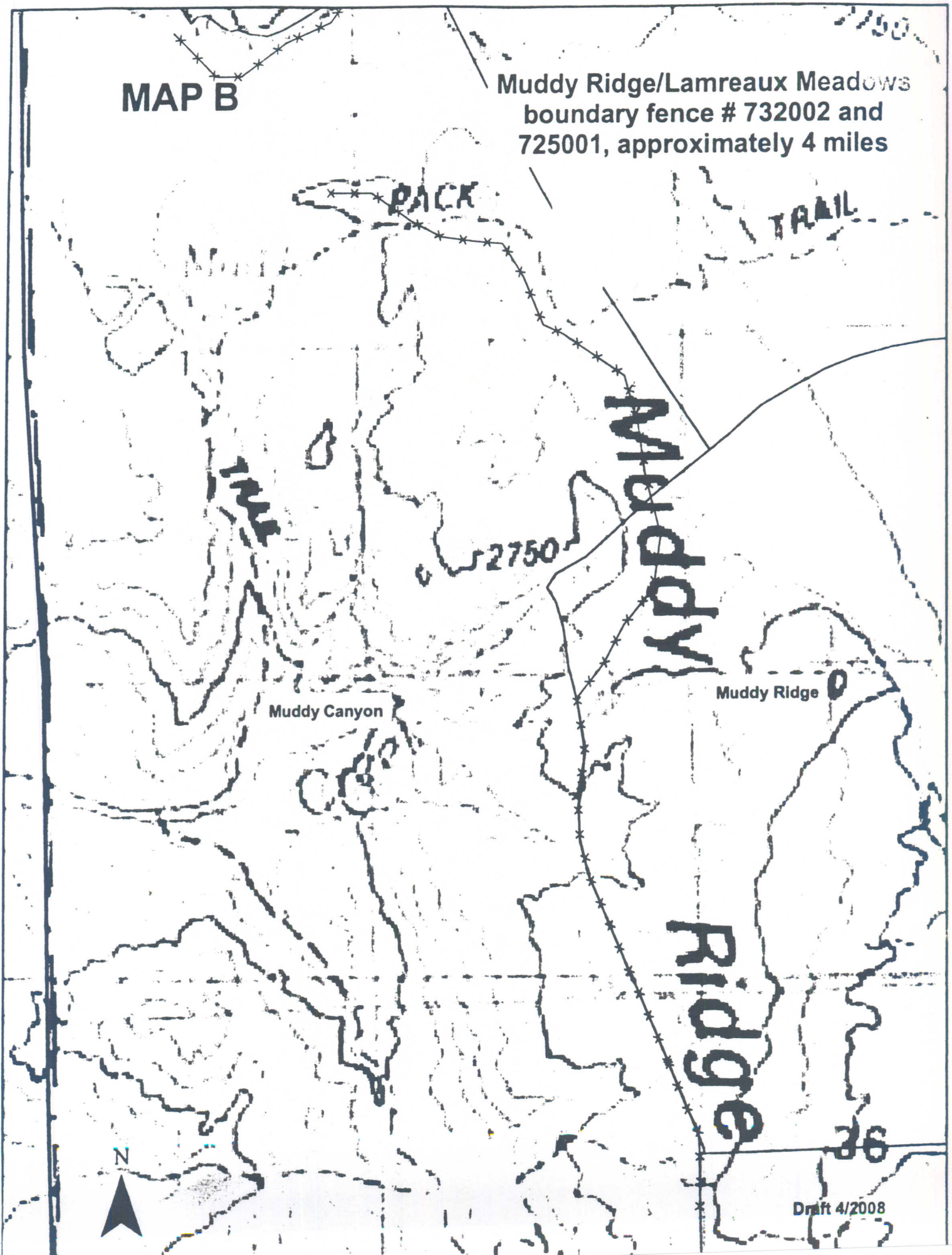


Draft 4/2008



MAP B

Muddy Ridge/Lamreaux Meadows
boundary fence # 732002 and
725001, approximately 4 miles



Muddy Canyon

Muddy Ridge

PACK

TRAIL

Muddy
Ridge

2750

36

N

Draft 4/2008

MAP C

**Irish Canyon/Lamreaux Meadows
boundary fence # 725002
approximately 2 miles**

Irish Canyon

Lamreaux Meadow

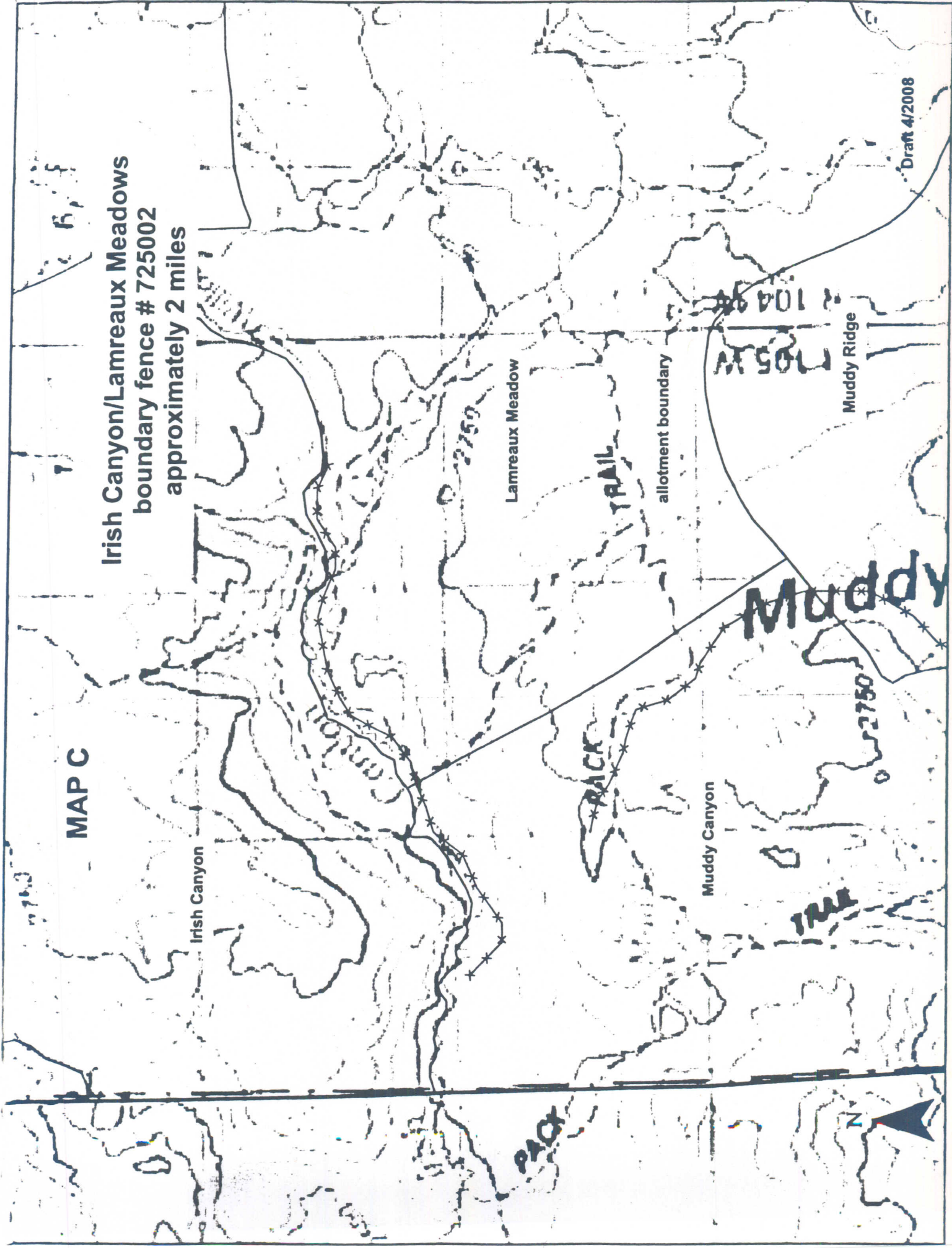
allotment boundary

Muddy Ridge

Muddy Canyon

Draft 4/2008

N



MAP C

**Irish Canyon/Lamreaux Meadows
boundary fence # 725002
approximately 2 miles**

Irish Canyon

Lamreaux Meadow

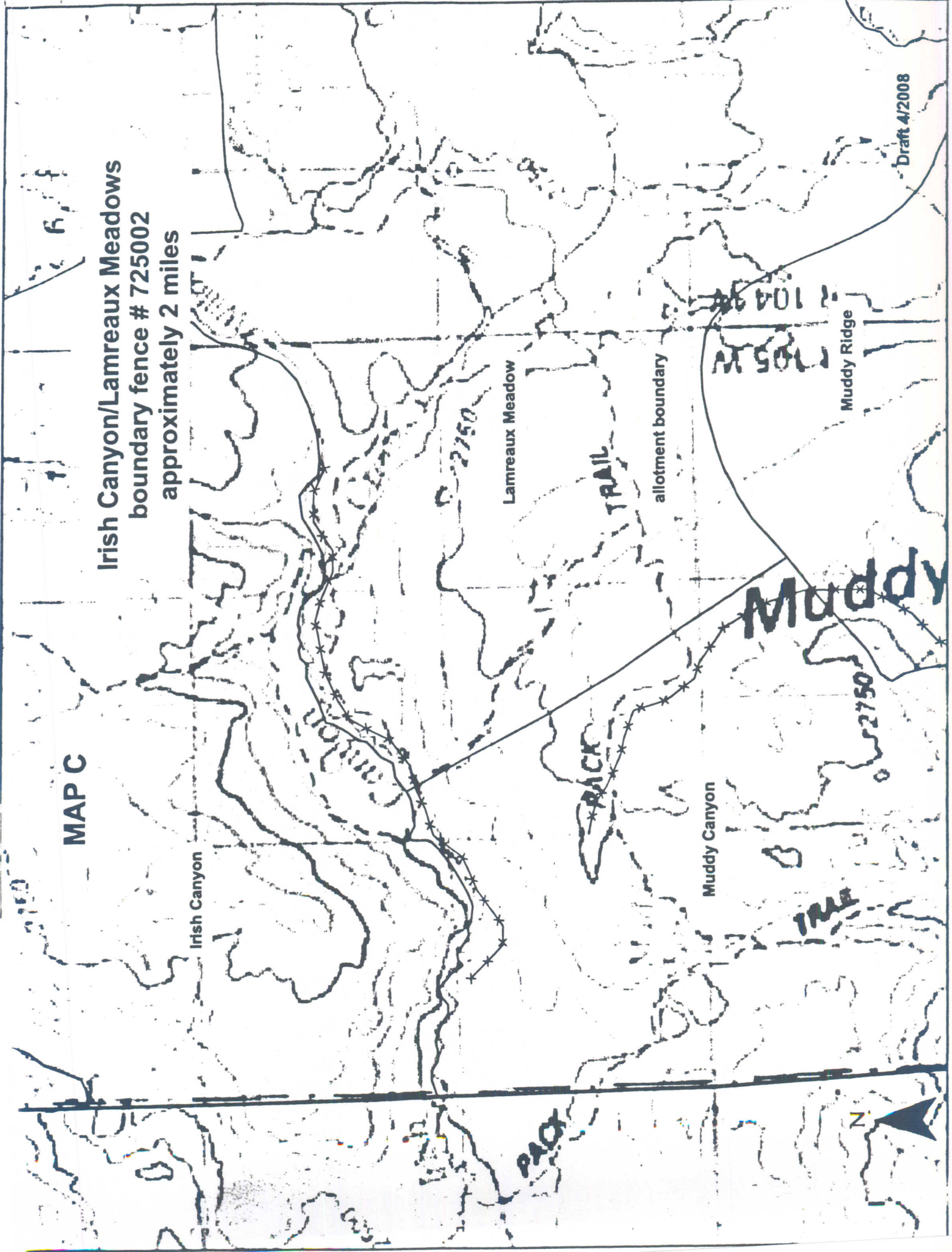
PACK TRAIL

allotment boundary

Muddy Canyon

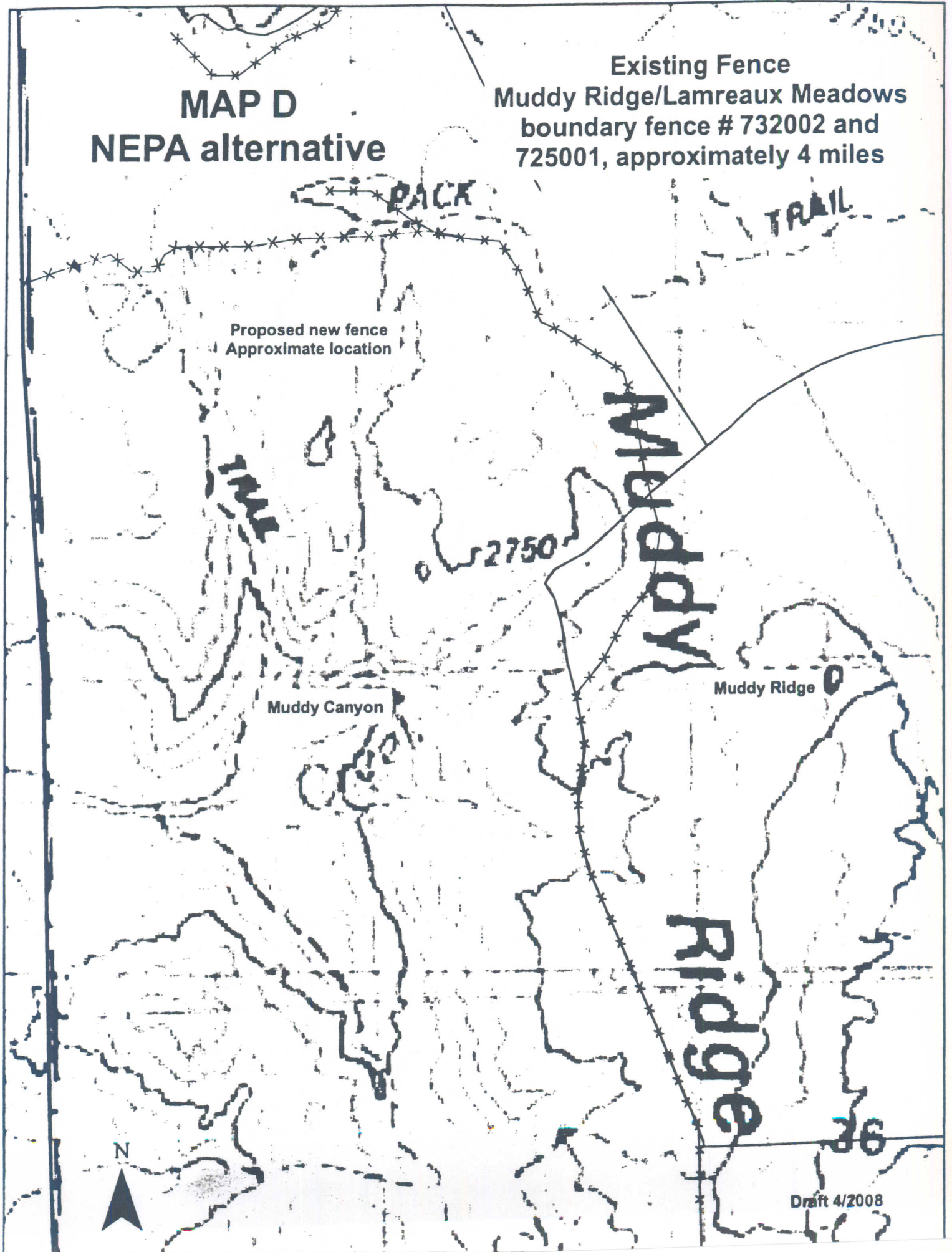
Muddy Ridge

Draft 4/2008



MAP D NEPA alternative

Existing Fence
Muddy Ridge/Lamreaux Meadows
boundary fence # 732002 and
725001, approximately 4 miles






Legend

- Camps
- Kitchens
- Facilities
- Trails
- Unimproved road

7-3-08



Dutch Joe Guard Station 

Bear Trap

Dutch Joe Exclosure Closed to Parking



Camp



File Code: 1230

Date: June 26, 2008

Route To:

Subject: 2008 National Rainbow Gathering

To: Gene Smithson

You are hereby authorized to exercise the full range of delegated authority required to manage the "2008 Rainbow Family National Gathering," which will occur on the Bridger-Teton National Forest during June and July of 2008. You have the authority and responsibility to prepare for and manage this event within the framework and guidelines of the law and Forest Service policy and direction set forth in this letter. Additional information will be made available as needed to clarify your authority and responsibilities. You and your team are authorized to begin working on the event immediately.

Your primary performance objectives and guidelines are as follows:

Event management

- Manage this event proactively as a noncommercial group use activity consistent with the direction of the Under Secretary of Agriculture. This direction will attempt an alternative approach of not requiring a non-commercial group use permit provided that a mutually agreed upon operating plan is developed and followed by the Rainbow Family. If a mutually agreed upon operating plan is not developed then current regulations should be enforced consistent with the U.S. Attorney's Office advice.
- Mobilize the needed resources to manage the event effectively, efficiently and safely.

Internal and external relationships and communications are extremely critical and will have to be established and maintained throughout the course of the event, including key Forest Service personnel, cooperating Federal, State, and local agencies, and members of the Rainbow Family. All actions must be well documented and an Incident Summary (Final Report) will be required.

Human Resource Management and Safety

- Ensure that the safety of employees, assigned personnel, the public, and event participants are considered throughout the course of the event.

Incident personnel will follow established Department of Agriculture guidelines regarding civil rights, and other Forest Service policies, practices, and procedures.

Information

- Provide for internal and external information exchange through the implementation of a communication plan.



- Ensure the agency cooperators, local officials, and the public are kept informed on the progress of the event.
- Manage media contacts within the framework of established agency policy.

Community Relations

- Establish and maintain strong community relations.

Private landowners, permittees, businesses, and the local community are of special concern due to their proximity to the Gathering and their potential for being impacted.

The Incident Management Team will be expected to work with the community and to identify their potential issues and concerns.

- Work with the leaders of the Gathering to minimize social impacts.
- Avoid imposing agency "red tape" on our neighbors and cooperators whenever possible.
- Consult with key contacts at the Ranger District and the Supervisor's Office; we have a long-standing relationship with the communities and may be able to help many situations.
- Cooperate fully with State, County and Local agencies and organizations in managing the event.

Resource Protection

The Forest has stewardship responsibility for the full range of natural resource values in the Gathering area. The Forest will provide your team with the expertise of resource specialists and coordinate with representatives of the Rainbow Family to develop an operating and a rehabilitation plan that is intended to provide protection of any identified sensitive sites during the Gathering and the rehabilitation of the site when the Gathering is concluded.

- Latrines, kitchens, and other features and activities that could affect water quality will be located in areas that will pose the least probability of degrading water quality.
- Prevent loss of large woody debris recruitment along streams.
- If any populations of rare plants or animals are found within the Gathering area, they must be flagged off and protected from harm.
- If any cultural heritage sites are found within the Gathering area they, too must be flagged off and protected from harm.
- Protection of any existing permitted structures or facilities in the area must be provided.
- Non-active and invasive plants are of particular concern as they may dominate the site following the Gathering. The Forest can provide additional expertise in seeding protocols during the rehabilitation process.

Fire Management

- The Forest has developed a plan that includes BLM, local agencies, and your IMT that determines the protocol and operational aspects of fire suppression and prevention during this incident. We expect this plan to be followed or the forest to be notified if it needs to be adjusted.
- The Forest is currently in the “moderate” fire danger level. Monitor fire activity associated with the incident. If the Forest or the IMT determines a need we will consider fire restrictions as necessary.
- Your contacts in Fire Management are Paul Hutta from Pinedale Ranger District (307-367-5735 or cell phone 307-360-6145). The Forest contact for fire is Rod Dykehouse (307-739-5576 or cell phone 307-413-2028).

Cost

- Ensure that all operations are cost-effective, efficient, and justifiable.
- Forest personnel working in support of the incident will apply charge-as-worked principles.
- Forest personnel assigned to the Incident will require pre-approval by the Incident Commander before charging to the Incident job code.

The “2008 Rainbow Family Gathering” will likely bring 10,000 or more visitors to the Forest. It is critical that the Team be proactive in working with all involved.

The Team’s assignment will last until released by the Forest Supervisor.

Now that the actual location of the Gathering has been identified, my Agency Representative and your primary point of contact will be Tom Peters, Pinedale District Ranger. He can be reached at: 307-367-5710 or cell phone 719-529-0006 during the duration of the event.

Mike Balboni, Deputy Forest Supervisor, will serve as the Forest’s Agency Administrator. Mike can be reached at: 307-739-5509 or cell phone 307-413-2018.

The Team’s performance rating will be based on the accomplishment of the directions set forth in this delegation of authority.

Kniffy Hamilton

CAROLE 'KNIFFY' HAMILTON
Forest Supervisor

cc: Mike Balboni, Tom Peters