

*SANTA FE NATIONAL FOREST*  
**RAINBOW FAMILY GATHERING**  
**2009**

***★ Final ★***

**INCIDENT ACTION PLAN**

**July 8+++..., 2009**

<b>INCIDENT OBJECTIVES</b>	1. Incident Name <b>Rainbow Family Gathering 2009</b>	2. Date <b>07/08/2009</b>	3. Time <b>0700</b>
4. Operational Period <b>07/08,09,10,.../2009 Rainbow Unified Command Team Operational Period</b>			
5. General Control Objectives for the Incident (include alternatives) <ul style="list-style-type: none"> <li>• <b>Provide for the safety and welfare of all incident staff through effective organization, good briefings, supervision within span-of-control, coordination of all resources, reliable communications, continuous situation awareness, and effective scene size-up prior to committing resources on any response.</b></li> <li>• <b>Use all available resources and opportunities to show respectful regard for Rainbow Family participants.</b></li> <li>• <b>Promote the safety and welfare of the public, protect infrastructure, and public property through information and enforcement of laws.</b></li> <li>• <b>Provide timely response to all appropriate requests for assistance.</b></li> <li>• <b>Ensure that Incident personnel follow established Department of Agriculture guidelines regarding civil rights, and other Forest Service policies, practices, and procedures.</b></li> <li>• <b>Provide effective incident management training experience for all trainee positions.</b></li> <li>• <b>Mobilize the needed resources to manage the event activity safely, effectively, and efficiently.</b></li> <li>• <b>Provide timely and accurate information to internal audiences, all levels of media, local communities, affected agencies, and partners.</b></li> </ul>			
6. Weather Forecast for Period <ul style="list-style-type: none"> <li>• <b>Keep informed of twice daily Santa Fe Zone Interagency Dispatch Center Forecasts.</b></li> </ul>			
7. General Safety Message <ul style="list-style-type: none"> <li>• <b>Observe driving regulations and personal limitations.</b></li> <li>• <b><u>Reduce speed by 25% on Forest Roads</u></b></li> <li>• <b>Honor Work/Rest requirements. (Work shifts restricted to 12 hours without IC prior approval).</b></li> <li>• <b>Get adequate rest, hydration, and use your vitamins.</b></li> <li>• <b>Santa Fe NF requires a hardhat to be worn anytime outside the vehicle when in the NF.</b></li> </ul>			
8 Attachments (mark if attached)			
<input checked="" type="checkbox"/> Organization List - ICS 203	<input checked="" type="checkbox"/> Medical Plan - ICS 206	<input checked="" type="checkbox"/> (Other)	
<input checked="" type="checkbox"/> Div. Assignment Lists - ICS 204	<input checked="" type="checkbox"/> Incident Map	<input type="checkbox"/>	
<input checked="" type="checkbox"/> Communications Plan - ICS 205	<input type="checkbox"/> Traffic Plan	<input type="checkbox"/>	
9. Prepared by (Planning Section Chief)		10. Approved by (Incident Commander)	

**Organization Assignment List, ICS Form 203**

<b>ORGANIZATION ASSIGNMENT LIST</b>		<b>1. INCIDENT NAME</b>	<b>2. DATE PREPARED</b>	<b>3. TIME PREPARED</b>
		Rainbow Gathering 2009	07/08/2009	0700
<b>POSITION</b>	<b>NAME</b>	<b>4. OPERATIONAL PERIOD (DATE/TIME):</b> 07/08+++.../2009		
<b>5. INCIDENT COMMAND AND STAFF</b>		<b>9. OPERATIONS SECTION</b>		
INCIDENT COMMANDER	Derek Padilla	CHIEF		
DEPUTY		DEPUTY		
SAFETY OFFICER	Rick Albrecht	a. BRANCH I- DIVISION/GROUPS		
INFORMATION OFFICER	SNF Public Affairs Office	BRANCH DIRECTOR		
LIAISON OFFICER	Dave Bervin-Emerg. Serv. Rep.	DEPUTY		Ex.(b)(2)(high)
		DIVISION/GROUP	Resources	Jim Eaton
<b>6. AGENCY REPRESENTATIVES</b>		DIVISION/ GROUP	Law Enforce	
<b>AGENCY</b>	<b>NAME</b>	DIVISION/ GROUP		Ex.(b)(6) & (b)(7)(C)
USFS	Erin Connelly	DIVISION/GROUP		
Cuba VFD	Alissa Short	DIVISION /GROUP		
USMS				
NM State Police				
Sandoval Cnty SD				
Rio Arriba SD				
NM DHS & EM	Don Scott, James Mason			
	Mary Magnusson			
<b>7. PLANNING SECTION</b>		b. BRANCH II- DIVISIONS/GROUPS		
CHIEF	Tom Fuchtmann	BRANCH DIRECTOR		
DEPUTY		DEPUTY		
RESOURCES UNIT		DIVISION/GROUP		
GISS (THSP)	Bill Griggs, Rick, Dave	DIVISION/GROUP		
DOCUMENTATION UNIT		DIVISION/GROUP		
DEMOBILIZATION UNIT		DIVISION/GROUP		
TECHNICAL SPECIALISTS				
		9c. VISITORS		
<b>8. LOGISTICS SECTION</b>		d. AIR OPERATIONS BRANCH		
CHIEF	Richard Montoya	AIR OPERATIONS BR. DIR.		
DEPUTY	Ex.(b)(2)(high)	AIR TACTICAL GROUP SUP.		
a. SUPPORT BRANCH		AIR SUPPORT GROUP SUP.		
DIRECTOR		HELICOPTER COORDINATOR		
SUPPLY UNIT		AIR TANKER/FIXED WING CRD.		
FACILITIES UNIT				
GROUND SUPPORT UNIT				
<b>b. SERVICE BRANCH</b>				
DIRECTOR				
COMMUNICATIONS UNIT	Richard Montoya			
MEDICAL UNIT	Ex.(b)(2)(high)			
FOOD UNIT				
<b>PREPARED BY (RESOURCES UNIT)</b>		<b>10. FINANCE/ADMINISTRATION SECTION</b>		
		CHIEF		Sophie Salaz
		DEPUTY		
		TIME UNIT		
		PROCUREMENT UNIT		Sophie Salaz
		COMPENSATION/CLAIMS UNIT		
		COST UNIT		

**SAFETY & HEALTH REMINDERS 2009 RAINBOW FAMILY GATHERING**  
**Santa Fe National Forest**

*July 5, 2009, through duration.*

*Today the Rainbow family members will start leaving in mass.  
Watch for increased traffic.*

*Always look out for the other driver, be prepared for the unexpected. Limit speed to match the road condition. Wear your seat belts. Watch out for animals.*

**DRIVING HOME** – *remember you must have had 8 consecutive hours off duty before beginning your shift or travel time driving home. No more than 2 hours driving time with out a rest stop, No more than 10 hours per shift.*

*Use good Officer Safety and Protective measures – Gloves & germ killing skin gel. Watch out for sharp objects and needles. Be aware of edge weapons.*

*Mental alertness, Look out for each other and recognize dangerous situations. Never stop seeking the next threat. Have an escape route.*

**Know your Backup** – *Have good Communications with each other and other L.E. units in the area.*

*Use good Officer Safety Skills. After transport wipe or spray your patrol vehicle with Lysol or decontamination wipes. And clean handcuffs.*

*Support and assist other L.E. agencies as needed.*

*Beware of all dogs. Look where you walk. Parvo virus is contagious.*

*When you go home, “think of where you walk, with those field boots”. Please decontaminate your field boots and gloves.*

*Resource personnel please check in and out with forest dispatch and Rainbow ICP. When parking and leaving your vehicle, lock it up. Always be aware of your surroundings – leave if you feel unsafe or unsure. Always have an on going escape route. “Ask yourself “what if”.*

*L.E. units assist Resource workers and State EMS workers when they are in the area Provide cover for them as needed. Have them check in and out with you.*

*Everybody I want to thank you for the great job you all are doing and have done.*



Your **National Weather Service** forecast



# Cuba NM

Enter Your "City, ST" or zip code

Go

NWS Albuquerque, NM

Mobile Weather Information | En Español

Point Forecast: Cuba NM

Last Update: 5:26 am MDT Jul 8, 2009

36.03°N 106.96°W (Elev. 6898 ft)

Forecast Valid: 8am MDT Jul 8, 2009-6pm MDT Jul 14, 2009

## Forecast at a Glance

Today	Tonight	Thursday	Thursday Night	Friday	Friday Night	Saturday	Saturday Night	Sunday
Sunny	Partly Cloudy	Slight Chc Tstms	Slight Chc Tstms	Slight Chc Tstms	Slight Chc Tstms	Slight Chc Tstms	Slight Chc Tstms	Slight Chc Tstms
Hi 89 °F	Lo 51 °F	Hi 85 °F	Lo 53 °F	Hi 88 °F	Lo 52 °F	Hi 90 °F	Lo 52 °F	Hi 89 °F

## Detailed 7-day Forecast

**Today:** Sunny, with a high near 89. West wind between 5 and 10 mph.

**Tonight:** Partly cloudy, with a low around 51. Northwest wind between 5 and 15 mph.

**Thursday:** A slight chance of thunderstorms. Partly cloudy, with a high near 85. North wind 5 to 10 mph becoming west. Chance of precipitation is 10%.

**Thursday Night:** A 20 percent chance of showers and thunderstorms. Mostly cloudy, with a low around 53. West wind between 5 and 10 mph becoming calm.

**Friday:** A 10 percent chance of showers and thunderstorms. Mostly cloudy, with a high near 88. Calm wind becoming west between 5 and 10 mph.

**Friday Night:** A 20 percent chance of showers and thunderstorms. Mostly cloudy, with a low around 52.

**Saturday:** A 10 percent chance of showers and thunderstorms. Partly cloudy, with a high near 90.

**Saturday Night:** A 10 percent chance of showers and thunderstorms. Mostly cloudy, with a low around 52.

**Sunday:** A 10 percent chance of showers and thunderstorms. Mostly cloudy, with a high near 89.

**Sunday Night:** A 10 percent chance of showers and thunderstorms. Mostly cloudy, with a low around 51.

**Monday:** Mostly sunny, with a high near 90.

**Monday Night:** Partly cloudy, with a low around 51.

**Tuesday:** Partly sunny, with a high near 90.

## Current Conditions

[View Down](#)

### Torreon

Lat: 36.03 Lon: -106.95 Elev: 6909

Last Update on Jul 7, 5:00 pm MDT

Not a Current Observation

### A Few Clouds

86 °F  
(30 °C)

Humidity:	19 %
Wind Speed:	W 14 MPH
Barometer:	NA
Dewpoint:	39 °F (4 °C)
Heat Index:	83 °F (28 °C)
Visibility:	20.00 mi.
More Local Wx:	3 Day History:

- ALBUQUERQUE PTBL #2 Observation
- COYOTE RAWS Observation
- CUBA RAWS Observation
- DEADMAN PEAK RAWS Observation
- JARITA MESA RAWS Observation
- JEMEZ RAWS Observation
- LOS ALAMOS Observation
- STONE LAKE RAWS Observation
- TOWER RAWS Observation

## Radar and Satellite Images



## Detailed Point Forecast

[View Up](#)

[Click Map for Forecast](#)

[Disclaimer](#)

www.srh.weather.



# National Weather Service Weather Forecast Office Albuquerque, New Mexico

[Main Page](#)

[SRH Home](#)

[Organization](#)

[Search](#)

[Enter Search Here](#)

Local forecast by  
"City, St" or zip code

City, St

[Current Hazards](#)  
[North & Central NM](#)  
[National](#)  
[Watches/Warnings](#)  
[Submit Storm Report](#)

[Current Conditions](#)  
[Observations](#)  
[Satellite Images](#)  
[Surface Maps](#)  
[Rivers & Lakes AHPS](#)  
[Precip Estimate](#)  
[Hydrology](#)

[Radar Imagery](#)  
[Albuquerque \[ABX\]](#)  
[Cannon AFB \[FDX\]](#)  
[Nationwide](#)

[Forecasts](#)  
[Activity Planner](#)  
[North & Central NM](#)  
[Aviation](#)  
[Fire Weather](#)  
[Graphical Fcsts](#)

[Climate](#)  
[Local](#)  
[National](#)  
[More...](#)

[Weather Safety](#)  
[Storm Ready](#)  
[Preparedness](#)  
[Weather Radio](#)  
[SKYWARN/Spotters](#)

[Additional Info](#)  
[Coop Program](#)  
[Our Office/Outreach](#)  
[CWSU ZAB](#)  
[Additional Links](#)  
[Local Research](#)  
[Road Conditions](#)  
[Precip Summaries](#)  
[Monthly Highlights](#)  
[Photo Archive](#)

[Contact us](#)  
[Weather Questions](#)  
[ABQ Webmaster](#)



[Static Images](#)

[Infrared Loops](#)

[Visible Loops](#)

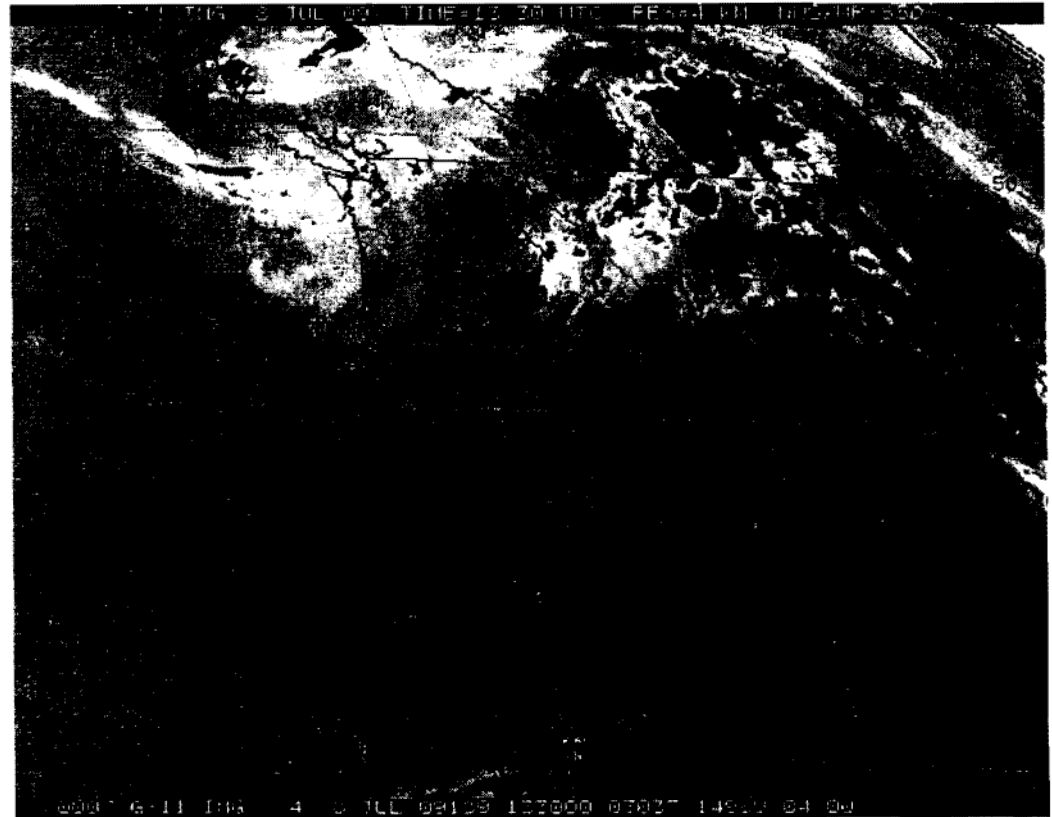
[Water Vapor Loops](#)

[Satellite Links](#)

## Satellite

### Infrared

### Regional



National Weather Service  
Albuquerque Weather Forecast Office  
2015 Clark Canyon Rd  
Albuquerque, NM 87108  
Ph: 505-243-0702  
Web Master's Email: [ABQ Webmaster](#)  
Page Author: WFO Albuquerque, NM  
Date modified:

[Disclaimer](#)  
[Credits](#)  
[Glossary](#)

[Privacy Policy](#)  
[About Our Organization](#)  
[Career Opportunities](#)

# National Weather Service Weather Forecast Office Albuquerque, New Mexico

www.srh.weather.



[Main Page](#)

[SRH Home](#)

[Organization](#)

[Search](#)

## Satellite

[Static Images](#)

[Infrared Loops](#)

[Visible Loops](#)

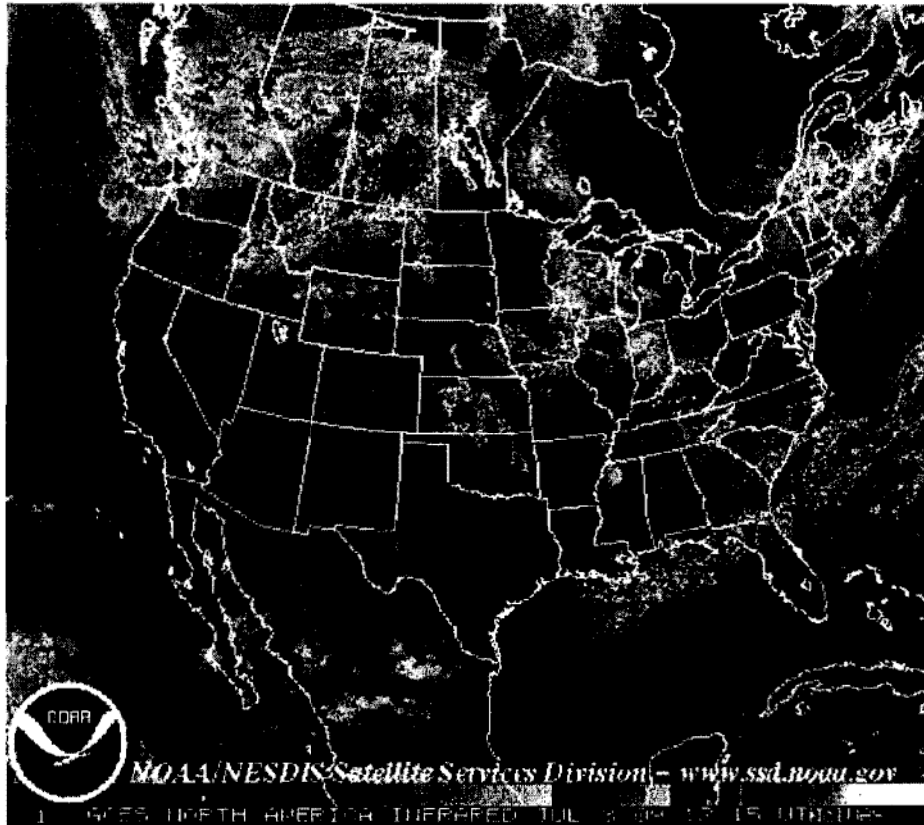
[Water Vapor Loops](#)

[Satellite Links](#)

## Infrared

[Back](#)

### Continental U.S. (CONUS)



NOAA/NESDIS Satellite Services Division - www.ssd.noaa.gov

1 565 NORTH AMERICA INFRARED JUL 2009 15 00Z

Local forecast by  
"City, St" or zip code

City, St

[Current Hazards](#)  
[North & Central NM](#)  
[National](#)  
[Watches/Warnings](#)  
[Submit Storm Report](#)

[Current Conditions](#)  
[Observations](#)  
[Satellite Images](#)  
[Surface Maps](#)  
[Rivers & Lakes AHPS](#)  
[Precip Estimate](#)  
[Hydrology](#)

[Radar Imagery](#)  
[Albuquerque \(ABX\)](#)  
[Cannon AFB \(FDX\)](#)  
[Nationwide](#)

[Forecasts](#)  
[Activity Planner](#)  
[North & Central NM](#)  
[Aviation](#)  
[Fire Weather](#)  
[Graphical Fcsts](#)

[Climate](#)  
[Local](#)  
[National](#)  
[More...](#)

[Weather Safety](#)  
[Storm Ready](#)  
[Preparedness](#)  
[Weather Radio](#)  
[SKYWARN/Spotters](#)

[Additional Info](#)  
[Coop Program](#)  
[Our Office/Outreach](#)  
[CWSU ZAB](#)  
[Additional Links](#)  
[Local Research](#)  
[Road Conditions](#)  
[Precip Summaries](#)  
[Monthly Highlights](#)  
[Photo Archive](#)

[Contact us](#)  
[Weather Questions](#)  
[ABQ Webmaster](#)



National Weather Service  
Albuquerque Weather Forecast Office  
2541 Clark Court, SE  
Albuquerque, NM 87106  
Ph: 505.243.0700  
Web Master's Email: ABQ Webmaster  
Page Author: WFO Albuquerque, NM  
Date modified:

[Disclaimer](#)  
[Credits](#)  
[Glossary](#)

[Privacy Pt](#)  
[About Our Organiza](#)  
[Career Opportun](#)

# 2009 RAINBOW IAP MEDICAL PLAN

## Emergency Procedures Checklist

### 1. Conduct Size-up of the situation to include:

- Nature of the problem, i.e., injury or illness.
- Number of people involved & crew identification.
- DO NOT give names of individuals over the radio
- Chief complaints, patient assessment (refer: to IRPG page 35).

### 2. Contact Santa Fe Dispatch Center

- Clear all radio traffic.
- Point of contact will relay patient information & type of evacuation requested.
- Point of contact will relay Lat. & Long. for pick up location or major landmark. Lat. & Long., UTM's or Legal location are required for Helicopter life flights.

### 3. For an ALS Med-EVAC Request:

- Point of contact will notify Incident Commander and Santa Fe Dispatch Center for ALS-EVAC.  
(\* See below for locations on Air Ambulances\*).
- If an outside Air Ambulance is requested, Santa Fe Dispatch Center initiates call. Santa Fe Dispatch informs Incident Commander and point of contact on estimated time of arrival and destination of patient.
- Point of contact will inform Santa Fe Dispatch Center with patient lift-off.
- Non-emergency radio Communications resume when emergency is complete, Santa Fe Dispatch Center will announce to all units.

### 4. For a Medical Transport request:

- Incident Commander or point of contact will notify Santa Fe Dispatch Center for Medical Transport (\*See below for locations Medical Transports\*) request.
- Incident Commander or point of contact will identify and relay pick-up site.
- Santa Fe Dispatch Center will coordinate patient pick-up designated medical transport.
- Santa Fe Dispatch Center relays ETA to pick-up site.
- Santa Fe Dispatch Center will announce to all units to resume normal radio operations.



**Hospitals/Clinics:**

Name	Address	Travel Time		Phone	Helicopter		Burn Camp	
		Air	Ground		Yes	No	Yes	No
Checker Board Area Health Systems	6349 HWY. 550 CUBA, NM 87013	15m	60m	911 (Emergency) (505) 289-3291	X			X
UNM Hospital	2211 Lomas NE, Albuquerque	35m	1.5 hrs	(505)272-2411 (Emergency) (505)272-2111	X		X	
Presbyterian Hospital	1100 Central Ave. S.E. Albuquerque, NM	35m	1.5 hrs	505-841-1234	X			X
St. Vincent	Santa Fe	25m	2.5h	(505)820-5250	X			X

**Designated Helispots:**

- [REDACTED]
- [REDACTED]
- 1. This an emergency landing zone only as it is a "power in, power out" helispot. Use only as last alternative.
- Meadow Family Gathering Helispot: [REDACTED]
- Cuba Admin Site, Warehouse, Engine Station Helispot: [REDACTED]

**EMTs:**

**HELICOPTER AMBULANCE SERVICE IN & ADJACENT TO YOUR AREA**

LOCATION	FACILITY	CALL SIGN	TYPE A/C	PHONE NUMBER	AVG. FLIGHT TIME (Minutes)
PHI Air Medical Med 50, 51	Albuquerque, NM	N351LG	Eurocopter AS350-B3 "A-Star"	1-800-633-5438	45 - 70
PHI Air Medical Med 52	Santa Fe, NM	N352LG	Eurocopter AS350-B3 "A-Star"	1-800-633-5438	15 - 40
San Juan Regional Air Care 1	Farmington, NM	N911NM	Bell 222UT	1-505-609-2000 Main # 1-505-609-6280 Patient Service	45 - 70
PHI Air Medical Med 53	Grants, NM	N353LG	Eurocopter AS350-B3 "A-Star"	1-800-633-5438	60 - 80
Mercy Memorial Center	Durango, CO	N403CF Care flight 4	Agusta 119 Koala	1-800-345-2516	45 - 70

Ex. (b)(2)(high)

### GROUND AMBULANCE SERVICE

FACILITY/LOCATION	COMMERCIAL PHONE	24 HOUR PHONE	ETA
CUBA RESCUE 125	CUBA, NM – EAST CORDOVA LANE	(505) 289-3456 or 911 or 1-800-898-2876	YES
CUBA AMBULANCE	CUBA, NM 6349 HWY 550	(505) 289-3456 or 911 or 1-800-898-2876	YES

### AIR AMBULANCE SERVICE

FACILITY/LOCATION	ADDRESS/LOCATION	24 HOUR PHONE
AIR CARE	FARMINGTON, NM	1-800-452-9990
LIFEGUARD AIR EMERGENCY SERVICES	ALBUQUERQUE, NM	(505) 272-3116
CAREFLIGHT	SANTA FE, NM	1-800-4521
TRI-STATE CARE FLIGHT	DURANGO, CO	1-800-800-0900 Disp. 970-382-7790 Office

## COMMUNICATION PLAN

### A. Radio Frequencies:

1. Command Frequency(s):

- **PRIMARY:** [REDACTED] RPT – RX=[REDACTED], TX=[REDACTED],  
Tone = [REDACTED] ( [REDACTED] )
- **SECONDARY:** [REDACTED] RPT – RX=[REDACTED], TX=[REDACTED]  
Tone = [REDACTED] ( [REDACTED] )

2. Tactical Frequency(s)

- **PRIMARY:** Tac1 [REDACTED] RX/TX

3. Air Operations Frequency(s): Air to Ground - [REDACTED]

### B. Verizon Identified Best Cellular Phone Coverage Sites:

1. 36.0123 x 106.7698
2. 36.0411 x 106.7588
3. 36.0418 x 106.7837

Updates of hospitals in area

Albuquerque Area		
Lovelace Downtown	601 Dr. Martin Luther King JR Ave NE Albuquerque N.M 87102	505-727-8000
Lovelace Womens	4701 Montgomery Blvd NE Albuquerque NM 87109	505-727-7800
Lovelace Westside	10501 Golf Course RD NW Albuquerque NM 87114	505-727-2000
Presbyterian Down Town	1100 Central Ave NE Albuquerque NM 87106	505-841-1234
Prebyterian Kasemen	8300 Constitution Ave NE Albuquerque NM 87110	505-291-2000
Heart Hospital	504 Elm Street NE Albuquerque NM 87012	505-724-2000
University NM	2211 Lomas Blvd NE Albuquerque, NM 87106	505-272-2411
Veterans Admin	2100 Ridgcrest Dr SE Albuquerque, NM 87108	505-265-1711
Rio Rancho		
Presbyterian Rio Rancho	4100 High Resort Blvd SE Rio Rancho, NM 87124	505-462-8901
Santa Fe		
St. Vencent's	455 Saint Michaels Dr Ste 110 Santa Fe, NM 87505	505-983-3361
Espanola		
Espanola Vally	1010 Spruce St Espanola, NM 87532	505-753-7111
Farmington		
San Juan Regional	525 S Schwartz Ave Farmington, NM 87401	505-325-5011

**DOH Nursing Response Strategic Plan, Rainbow Family Gathering, June-July 2009**

**Local Hospital Contacts:**

Lovelace Westside Emergency Room	[REDACTED] [REDACTED] [REDACTED] Lead technician, ER [REDACTED]@lovelace.com [REDACTED] MD [REDACTED]
PMS, Cuba, New Mexico	[REDACTED] [REDACTED] [REDACTED] RN
Presbyterian Urgent Care, Rio Rancho, NM	[REDACTED] [REDACTED] [REDACTED]@phs.org
EMS Services, Cuba	[REDACTED] [REDACTED]
Cuba Fire Department	[REDACTED] [REDACTED]
UNM Psychiatric Emergency	[REDACTED] RN [REDACTED]
Presbyterian Downtown	[REDACTED] RN [REDACTED]
UNM Emergency Room	[REDACTED], RN [REDACTED] [REDACTED]@salu.unm.edu
Lovelace Downtown ER	[REDACTED] RN [REDACTED]
San Juan Regional Medical Center, ER	[REDACTED] RN [REDACTED] [REDACTED]@SJRMC.net [REDACTED] RN Infectious Disease [REDACTED]@SJRMC.net

**Nursing Response Strategic Plan:**

[REDACTED] RN, BSN

[REDACTED] RN

1. Attend inter-agency briefings
2. Establish relationships with Forest Service, EMS, local hospitals and urgent care, Rainbow Family CALM
3. Provide a consistent physical presence at the gathering/establish trust and exchange of information to the extent possible with CALM workers
4. Assist DOH Epidemiology infectious disease surveillance, and intervention if necessary (e.g. sample collection, medication administration, isolation and quarantine)
5. Stock local Public Health Office with equipment specified by Epidemiology Department
6. Provide on-call support as needed
7. Participate in education outreach to Rainbow kitchens and CALM
8. Provide adult immunizations of Hep B and Hep A to Forest Service personnel as requested
9. Accompany Epidemiology teams to the gathering in order to provide a consistent contact and facilitate exchange of information.
10. Maintain regular contact and exchange of information with nurse managers at local Emergency Rooms in order to facilitate enhanced syndromic surveillance as recommended by DOH Infectious Disease Epidemiology Bureau.
11. Inform DOH Pharmacy and Laboratory staff as needed regarding laboratory sampling activities and any recommended distribution of medication.

ROOM/CELL NUMBERS

NAME	ROOM #	CELL #
[REDACTED]	108	[REDACTED]
[REDACTED]	307	[REDACTED]
[REDACTED]	124	[REDACTED]
[REDACTED]	301	[REDACTED]
[REDACTED]	216	[REDACTED]
Beckley, Bob	315	[REDACTED]
[REDACTED]	303	[REDACTED]
[REDACTED]	321	[REDACTED]
[REDACTED]	127	[REDACTED]
[REDACTED]	232	[REDACTED]
[REDACTED]	311	[REDACTED]
Florich, Tom	[REDACTED]	[REDACTED]
[REDACTED]	222	[REDACTED]
[REDACTED]	221	[REDACTED]
[REDACTED]	330	[REDACTED]
[REDACTED]	324	[REDACTED]
[REDACTED]	106	[REDACTED]
[REDACTED]	217	[REDACTED]
[REDACTED]	239	[REDACTED]
[REDACTED]	300	[REDACTED]
[REDACTED]	100	[REDACTED]
[REDACTED]	219	[REDACTED]
[REDACTED]	109	[REDACTED]
[REDACTED]	314	[REDACTED]
[REDACTED]	114	[REDACTED]
[REDACTED]	202	[REDACTED]
Reynolds, Chris	312	[REDACTED]
[REDACTED]	310	[REDACTED]
Roof, Rebecca	[REDACTED]	[REDACTED]
Rose-Ritchie, Marcia	[REDACTED]	[REDACTED]
[REDACTED]	338	[REDACTED]
[REDACTED]	230	[REDACTED]
[REDACTED]	238	[REDACTED]
[REDACTED]	218	[REDACTED]
[REDACTED]	320	[REDACTED]
[REDACTED]	323	[REDACTED]
[REDACTED]	325	[REDACTED]
[REDACTED]	208	[REDACTED]
[REDACTED]	326	[REDACTED]
[REDACTED]	328	[REDACTED]
[REDACTED]	322	[REDACTED]
[REDACTED]	225	[REDACTED]

Ex.(b)(6) & (b)(7)(C)

Ex.(b)(2)(high)

<b>1. OPERATIONS Resources</b>		<b>2. DIVISION/GROUP Resources</b>		<b>ASSIGNMENT LIST</b>					
<b>3. INCIDENT NAME</b> Rainbow Family Gathering 2009			<b>4. OPERATIONAL PERIOD</b> Daytime Operations DATE <u>07/08++/2009</u> TIME <u>0700-1800</u>						
<b>OPERATIONS CHIEF</b> <b>BRANCH DIRECTOR</b>		<b>5. OPERATIONAL PERSONNEL</b> Jim Eaton - [redacted] _____ DIVISION/GROUP SUPERVISOR AIR TACTICAL GROUP SUPERVISOR		Jim Eaton - [redacted] _____					
<b>6. RESOURCES ASSIGNED TO THIS PERIOD</b>									
STRIKE TEAM/TASK FORCE/ RESOURCE DESIGNATOR	CALL #	LEADER	NUMBER PERSONS	TRANS. NEEDED	PICKUP PT./TIME	DROP OFF PT./TIME			
Wildlife	[redacted]	Ramon Borrego	1	N					
Fire	[redacted]	Jarod Taylor	1	N					
Fire	[redacted]	Brian McCoy	1	N					
Fire	[redacted]	James Casaus	1	N					
Fuels	[redacted]	Tom Fuchtman	1	N					
<b>7. OPERATIONS</b>									
<ul style="list-style-type: none"> <li>• Continue to monitor exodus, vacating kitchens and camps, and residual impacts of those areas.</li> <li>• Continue to survey paths, trails, and roads for rehab needs.</li> <li>• Monitor parking and traffic flow.</li> <li>• Continue H2O samples on Palomas and American Creeks on a regular basis.</li> <li>• Meet Jay Hi for rehab coordination Wednesday 7/8.</li> <li>• Send all photos to Lawrence Lujan who will make up disks and distribute to event management.</li> </ul>									
<b>8. SPECIAL INSTRUCTIONS</b>									
<ul style="list-style-type: none"> <li>• Maintain situational awareness with LEO personnel and incident command post.</li> </ul>									
<b>9. DIVISION/GROUP COMMUNICATIONS SUMMARY</b>									
FUNCTION		FREQ.	SYSTEM	CHAN.	FUNCTION		FREQ.	SYSTEM	CHAN.
COMMAND	LOCAL	[redacted]	[redacted] repeater		SUPPORT	LOCAL			
	REPEAT	[redacted]	[redacted]			REPEAT			
DIV./GROUP TACTICAL		[redacted] TX/RX	Tac 1		GROUND TO AIR				
PREPARED BY (RESOURCE UNIT LEADER)				APPROVED BY (PLANNING SECT. CH.)			DATE	TIME	



**Rainbow Family Gathering 2009**  
**Cuba Ranger District, Santa Fe National Forest**

**TELEPHONE LOG**

DATE	TIME 24 HOUR	NAME	PHONE #	INFORMATION REQUESTED	FOLLOW-UP BY WHOM	INITIAL
		Ex.(b)(6) & (b)(7)(C)				

- Please refer all calls needing follow-up to Derek Padilla, [REDACTED] or appropriate Incident Command Team personnel
- Refer all media calls to Lawrence Lujan, Denise Ottaviano, or Andrea Martinez
- Please use this form to record walk-in inquires
- Please record all calls regarding the Rainbow Family Gathering and save for Incident file



Ex. (b)(6) & PA



Helen Pruitt/R3/USDAFS

07/09/2009 11:54 AM

To Derek J Padilla/R3/USDAFS@FSNOTES, Lawrence M Lujan/R3/USDAFS@FSNOTES

cc

bcc

Subject Public Comment on Trash from Rainbow Gathering

Unfortunately I did not get his Phone number but a gentleman stopped by this morning. He said he has property on [REDACTED] and came to check on it and went by the rainbow gathering and saw the mounds of trash. He said there is discarded air mattresses and underwear and felt very stong about the mess they left behind and feels that the Forest Service should mobilize 11 dump trucks up there to get rid of it. His name is [REDACTED].

Helen

Ex. (b)(6) & PA

Erin Connelly/R3/USDAFS  
07/13/2009 10:33 AM

To 'Lisa Law' [REDACTED] >  
cc  
bcc 'Ms. Erin Connelly' <econnelly@fs.fed.us>  
Subject Re: Permit and Operating Plan [REDACTED]

Hi Lisa

I'm in ABQ and Phoenix this week. Can you do next week? I'll check my calendar. Want to go to the site?

----- Original Message -----

From: Lisa Law [REDACTED]  
Sent: 07/12/2009 08:58 AM AST  
To: Erin Connelly  
Subject: Re: Permit and Operating Plan

Erin,

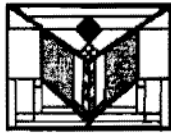
How are you doing?

I would love to talk to you about the results of the Rainbow Gathering and how it is going during clean up.

Let me know when you have time.

I also have news of the treatment of campers and policy of the LEOs that I want to share with you too.

Thanks, Lisa



**Gail C Tunberg/R3/USDAFS**

07/13/2009 12:23 PM

To: Derek J Padilla/R3/USDAFS@FSNOTES

cc

bcc

Subject: Re: Fw: Rainbow group Gathering in New Mexico

If he saw the photograph on front page of the Albuquerque Journal last Sunday, he is going to be even more upset. Thanks for contacting him and responding to his concerns. I think Tom and Brandon at RMEF contacted him too.

Gail Tunberg  
Wildlife Program Leader  
USDA Forest Service  
Southwestern Region  
333 Broadway Blvd SE  
Albuquerque, NM 87102  
(505) 842-3262  
(505) 842-3152 Fax

Derek J Padilla/R3/USDAFS



**Derek J Padilla/R3/USDAFS**

07/06/2009 09:29 AM

To: Gail C Tunberg/R3/USDAFS@FSNOTES

cc

Subject: Re: Fw: Rainbow group Gathering in New Mexico

Hello Gail. Thank you for your response. I replied to Mr. [REDACTED]. He is still concerned about the area, but is much more calm about the situation. I thought I cc'd you, but I don't see you in the cc list, so I'll forward my response now. Thanks again.

.....  
Derek J. Padilla  
District Ranger  
Santa Fe NF - Cuba Ranger District  
P O Box 130  
Cuba, NM 87013  
(575) 289-3264 (phone)  
(505) 470-1937 (mobile)  
(575) 289-0232 (fax)  
Internal extension: 72130 (Cuba)  
E-mail: dpadilla@fs.fed.us  
.....

Gail C Tunberg/R3/USDAFS



**Gail C Tunberg/R3/USDAFS**

07/06/2009 09:15 AM

To: Derek J Padilla/R3/USDAFS@FSNOTES

cc

Subject: Re: Fw: Rainbow group Gathering in New Mexico



Derek, in response to your question, I have not contacted Mr. [REDACTED]. His inquiry came to RMEF. Tom Toman called me about his concerns. Mr. [REDACTED] sent several RMEF members and staff an e-mail. I called Ray about it and he provided background about coordination for the Gathering, including talking with NMDGF about impacts to wildlife. I sent an e-mail to Tom Toman that included the information from Ray. Tom sent a message back to Brandon H. at RMEF about his experiences with coordinating Rainbow Gatherings, I will forward that to you.

Gail Tunberg  
Wildlife Program Leader  
USDA Forest Service  
Southwestern Region  
333 Broadway Blvd SE  
Albuquerque, NM 87102  
(505) 842-3262  
(505) 842-3152 Fax

Derek J Padilla/R3/USDAFS



**Derek J Padilla/R3/USDAFS**

07/02/2009 06:33 PM

To Ramon C Borrego/R3/USDAFS@FSNOTES, Chantel M Cook/R3/USDAFS@FSNOTES, Gail C Tunberg/R3/USDAFS@FSNOTES, bgleadle@state.nm.us, tom@rmef.org, bhoffner@rmef.org

cc

Subject Fw: Rainbow group Gathering in New Mexico

Hello all. Has anyone responded to Mr. [REDACTED] directly? I was told that someone (I don't know who that someone was going to be) would be contacting Mr. [REDACTED] to address his concerns. I don't think he is going to like the answers he will be given, but I don't want him to feel that he is being ignored as he insinuates in his message below. I don't want to give him different information than he may already have gotten and didn't like, so that is why I am checking before I contact him. Thanks.

\*\*\*\*\*  
Derek J. Padilla  
District Ranger  
Santa Fe NF - Cuba Ranger District  
P O Box 130  
Cuba, NM 87013  
(575) 289-3264 (phone)  
(505) 470-1937 (mobile)  
(575) 289-0232 (fax)  
Internal extension: 72130 (Cuba)  
E-mail: dpadilla@fs.fed.us  
\*\*\*\*\*

----- Forwarded by Derek J Padilla/R3/USDAFS on 07/02/2009 06:23 PM -----

**Ethel Baca/R3/USDAFS**

07/02/2009 07:34 AM

To Derek J Padilla/R3/USDAFS@FSNOTES

cc

Subject Fw: Rainbow group Gathering in New Mexico

----- Forwarded by Ethel Baca/R3/USDAFS on 07/02/2009 07:33 AM -----



[REDACTED]  
07/01/2009 09:40 PM

To "senator\_bingaman@bingaman.senate.gov"  
<senator\_bingaman@bingaman.senate.gov>,  
"bsilva@fs.fed.us" <bsilva@fs.fed.us>,  
"bmartinez@fs.fed.us" <bmartinez@fs.fed.us>, Senator Tom  
Udall <Senator@tomudall.senate.gov>, Attila Bality  
<attila\_bality@nps.gov>, "ethelbaca@fs.fed.us"  
<ethelbaca@fs.fed.us>  
cc "casework@bingaman.senate.gov"  
<casework@bingaman.senate.gov>,  
"timothy.jennings@nmlegis.gov"  
<timothy.jennings@nmlegis.gov>,  
"senatormssanchez@aol.com"  
<senatormssanchez@aol.com>,  
"Matthew.Wunder@state.nm.us"  
<Matthew.Wunder@state.nm.us>,  
"r.kirkpatrick@state.nm.us" <r.kirkpatrick@state.nm.us>,  
"daniel.brooks@state.nm.us" <daniel.brooks@state.nm.us>  
Subject Rainbow group Gathering in New Mexico

Mr. Bingaman and all who should be concerned.

The Rainbow group is having their gathering this month in the Jemez Mountains, Cuba Ranger District here in NM with up to 10,000 or more people for over a week.

I am very concerned and upset at the site they are using. That area of the Mountain is one of the only area's on that side away from the Calderas that is a very delicate habitat, it is the elk calving and deer fawn nursery area for the whole west half of the Jemez mountains. Even the USFS maps show Elk calving area on the map for that site. This is insane, out of all the places to let them go this was the worst. Big mistake.

We would like to know **who with the forest service is responsible** for letting them have that site, there was a lot of better sites that would not have been so damaging in the Jemez. That person needs to be fired.

We were up there 2 weeks ago when a few of the rainbow people were already there, they had a group of large ATVs and Chainsaws opening up trails and old logging roads in that whole area. We could not stop them and reports go unanswered.

I have spent a lot of time in that area over the last 20 years, and have fought to keep it conserved. I have documented the animals and habitat in that area. This gathering has and will ruin that area for years to come no matter how much rehab is put into it. The animals are being pushed out of there nursing area and sanctuary.

It will take years for that area to even come close to what it was for the last 50 years. You can not have that many people in that small of an area for even one day.

10,000 people going to the bathroom, 1000s of cars, noise, loud music, fires. They are ruining a truly special place.

My family and friends and a lot of other New Mexicans, camp, hunt and enjoy one the best places on public land that a person can get away from the crowds in this whole state. Our hearts are broken that this is happening - a place we raised our children is gone in a matter of days by a bunch of hippies and it will never be the same.

Would the goverment let the Rianbow group use the Calderis?????

We have already been trying to do something about the ATVs in that area, but now all is lost.

We will start documenting the damage starting July 17th, and compare with our years of pics and notes.

Please do something about this so it never happens again. They should be forced to use Leave No Trace. and that is how we expect that area to look like by the end of Aug.

We will be calling

Thank You





**Gail C Tunberg/R3/USDAFS**

07/15/2009 09:17 AM

To Derek J Padilla/R3/USDAFS@FSNOTES

cc

bcc

Subject Re: Fw: Concern for elk and deer impacts by Rainbow Gathering and ATV's

Thanks for sending a response to Mr. [REDACTED] I think he understands the answer, he just doesn't like it.

Gail Tunberg  
Wildlife Program Leader  
USDA Forest Service  
Southwestern Region  
333 Broadway Blvd SE  
Albuquerque, NM 87102  
(505) 842-3262  
(505) 842-3152 Fax

Derek J Padilla/R3/USDAFS



**Derek J Padilla/R3/USDAFS**

07/06/2009 09:31 AM

To Gail C Tunberg/R3/USDAFS@FSNOTES

cc

Subject Fw: Concern for elk and deer impacts by Rainbow Gathering and ATV's

FYI

\*\*\*\*\*  
Derek J. Padilla  
District Ranger  
Santa Fe NF - Cuba Ranger District  
P O Box 130  
Cuba, NM 87013  
(575) 289-3264 (phone)  
(505) 470-1937 (mobile)  
(575) 289-0232 (fax)  
Internal extension: 72130 (Cuba)  
E-mail: dpadilla@fs.fed.us  
\*\*\*\*\*

----- Forwarded by Derek J Padilla/R3/USDAFS on 07/06/2009 09:30 AM -----



[REDACTED]  
07/03/2009 11:31 PM

To Derek J Padilla <dpadilla@fs.fed.us>

cc "TOM@RMEF.ORG" <TOM@RMEF.ORG>, "bhoffner@RMEF.ORG" <bhoffner@RMEF.ORG>, Ramon C Borrego <rborrego@fs.fed.us>, Chantel M Cook <cmcook@fs.fed.us>, Laurie A Thorpe

Ex. (b)(6) & PA



<lathorpe@fs.fed.us>, Judy Yandoh <jyandoh@fs.fed.us>, Don G DeLorenzo <ddelorenzo@fs.fed.us>, [REDACTED]

Denise Ottaviano <dottaviano@fs.fed.us>, Dolores Maese <dmaese@fs.fed.us>, Daniel Jiron <djiron@fs.fed.us>, Erin Connelly <econnelly@fs.fed.us>, "bgleadle@state.nm.us" <bgleadle@state.nm.us>

Subject RE: Concern for elk and deer impacts by Rainbow Gathering and ATV's

Derek Thank you very much for the response, I understand the difficulties, concerns and costs that all of you with the Forest Service are having with this, and I am glad that you all see ours. I thank you for shedding some light on this matter. I will pass this email on to others.

I am however still concerned about what the area will look like and that the Rainbow group does clean it up, and rehabilitate that whole area correctly ( remove human waste that will be behind every tree in a large area surrounding Park Vernado and along FR70 and 69) all in a timely manner and leave. We will still go up there in a few weeks to see for our self's, with cameras. We have the right and it is our duty as residences, conservationist, environmentalist and hunters to make sure our forests are taken care of. Please do everything you can to get this area back to what it was before they arrived. We will help where we can.

It is sad that a group like this can congregate in an area like this and disrupt not only the habitat and wildlife but the residences of New Mexico who use this area for up to 2 or 3 whole summer months and also disrupt the hunters who have permits for this area starting in September that may never draw a permit again for years. There are laws that prohibit disrupting legal hunts - which they have done. It would be wise for them to be gone several days before the September hunt.

In early June there were several ATV's with chain saws, and we did run into them, they did said they were going around opening all the side logging roads, and had just came out of a burmed closed old road. This is one area worth saving from being over run by ATV's before its to late.

I understand all of our rights of the 1st amendment, but the US National Forest has laws and rules that the rest of us abide by.

The 1st amendment states a group can assemble to protest the government, and the freedom of association and assembly. It is awful that they can just do this in any National Forest. **I see this gathering protesting you the National Forest, the residence of NM, and the lack of any respect of our forest habitat and wildlife.**

I think the right to assemble in certain areas can and should be debated in the courts again.

I hope they never come back to the Jemez Mtns again. Because of there assemble - we have not been able to use that area as we do every year as residents - what about our rights?

Our biggest fear is that area will never be the same.

Thank You

[REDACTED]  
**From:** Derek J Padilla [mailto:dpadilla@fs.fed.us]

**Sent:** Friday, July 03, 2009 10:19 AM

**To:** [REDACTED]

**Cc:** TOM@RMEF.ORG; bhoffner@RMEF.ORG; Ramon C Borrego; Chantel M Cook; Laurie A Thorpe; Judy



Yandoh; Don G DeLorenzo [REDACTED] Denise Ottaviano; Dolores Maese; Daniel Jiron;  
Erin Connelly; bgleadle@state.nm.us; Derek J Padilla

**Subject:** Fw: Concern for elk and deer impacts by Rainbow Gathering and ATV's

Hello Mr. [REDACTED] and Mr. [REDACTED]. I apologize that if through all the contacts you've made no one has responded back to you directly. As you can see in the e-mail traffic below people were working on addressing your questions. As is indicated below, there really isn't a decision on the part of the Forest Service to allow or not allow the Rainbow gathering to occur. They identify an area and so long as they aren't impacting any federally protected species, heritage sites, or some other congressionally mandated reason, we can't keep them from utilizing a particular site. What gives them the "right" to do this is the first amendment of the constitution which they have taken us to court on in the past and won. We too were concerned about the impacts to elk and other wildlife species in the area and took those concerns into consideration to mitigate the impacts to the extent possible. In fact we did find a federally protected species in the area and denied their request to designate the area of concern for parking. To date they have not utilized that area as agreed too. We have been working very closely with members of this group to ensure that when we do find resource concerns, that they are addressed. Again, they have been very cooperative and resolved virtually all the issues we have brought to their attention. We have spoken with individuals who have experienced past gatherings on their forests, and their description of the rehabilitation efforts are similar to those Mr. Toman describes below. In regards to the ATVs you encountered I do not believe they were associated with this group. I've been up at the site almost everyday for the past three weeks and have not seen a single ATV. I've also inquired about the presence of ATVs with the 20 or 30 other resource and law enforcement personnel who are patrolling the area and they report the same thing (no ATVs). ATV use in the forest is an issue and we are currently working on our Travel Management Plan to address this issue. I hope all the information below as well as what I have provided gives you the information you were requesting although I know you probably still don't agree. But hopefully you now have a better understanding of "why". I've also attached a copy of a news release that discusses natural resources in relation to this gathering.

\*\*\*\*\*  
Derek J. Padilla  
District Ranger  
Santa Fe NF - Cuba Ranger District  
P O Box 130  
Cuba, NM 87013  
(575) 289-3264 (phone)  
(505) 470-1937 (mobile)  
(575) 289-0232 (fax)  
Internal extension: 72130 (Cuba)  
E-mail: dpadilla@fs.fed.us  
\*\*\*\*\*

Gail C  
Tunberg/R3/ To "Tom Toman" <TOM@RMEF.ORG>  
USDAFS cc "Brandon Hoffner" <bhoffner@RMEF.ORG>, Ramon C Borrego/R3/USDAFS@FSNOTES, Ramon C  
Borrego/R3/USDAFS@FSNOTES, Chantel M Cook/R3/USDAFS@FSNOTES, Laurie A  
06/29/2009 Thorpe/R6/USDAFS@FSNOTES, Judy Yandoh/R3/USDAFS@FSNOTES, Don G  
02:13 PM DeLorenzo/R3/USDAFS@FSNOTES, [REDACTED]

Ex. (b)(6) & PA

Subject: RE: Concern for elk and deer impacts by Rainbow Gathering and ATVs [Link](#)

Tom, thanks for sharing the concern from Mr. [REDACTED] about impacts to elk and deer during calving and fawning season due to the Rainbow Gathering and ATVs on the Santa Fe National Forest. I need to correct earlier information on the status of the Gathering. The group does have a permit for their stay. Although they have successfully won in court in past years, and have not had a permit in several years, they signed one this year. The permit requires rehabilitation of surface disturbance caused by the Gathering. I am forwarding this message with Mr. [REDACTED] e-mail to Ray Borrego, Wildlife Biologist at Cuba Ranger District.

Prior to the arrival of the first group, Ray coordinated with New Mexico Department of Game and Fish who visited the location. They did not propose additional mitigations beyond what is included in the permit. In speaking with Ray, he said that although elk and deer were displaced at Bosque Vennado, the site of the Gathering, they are finding plenty of good forage and nursery habitat within other areas of San Pedro Parks. The Parks are comprised of a series of large meadows intermixed with forest. Although there are short term impacts to elk and deer during calving and fawning, the area will be rehabilitated by August. All of the Rainbow participants will be out of Bosque Vennado by the end of August. There should not be any interference with the September archery hunt.

The Santa Fe National Forest is currently planning travel management and may take Mr. [REDACTED] comments regarding ATV impacts into consideration.

If you would like more information, Ray would be happy to talk with you. His number is (575) 289-3264.

Gail Tunberg  
Wildlife Program Leader  
USDA Forest Service  
Southwestern Region  
333 Broadway Blvd SE  
Albuquerque, NM 87102  
(505) 842-3262  
(505) 842-3152 Fax

"Tom Toman" <TOM@RMEF.ORG>

06/29/2009 10:46 AM

To "Brandon Hoffner" <bhoffner@RMEF.ORG>

cc

Subject RE: Jemez Mountains elk

Brandon,

I have personally experienced the Rainbow Family of the Living Light. The first was outside Lander, the second was near Big Piney and the last was in the Upper Green River. We too were overwhelmed by the sheer number of people that would be invading these areas and were concerned about all kinds of resource damage, from grass trampling to stream pollution to poaching! Most of our worries were not realized, thankfully! From a resource standpoint, the group did a fairly good job of cleaning up after their celebration. They were required by USFS to rehabilitate the area with seed mixes approved by USFS on trails and camping areas that were trampled in to the point native vegetation was harmed or removed. My

experiences were that the rehab work was done well and by the end of summer and certainly by the middle of the next summer, the area showed little sign of the large number of folks who were in the area for a short time. We too were concerned about the impact on wildlife, especially the late calving and nursery areas that cow elk and their offspring used in these areas. We could not measure adverse effects although I am certain there could have been some that we could not observe. About a month after the celebration, we started seeing elk and deer using the area and the following summer saw what we would consider normal distribution on and around the camping site area.

There was always an issue of permits and party sizes. Standard for USFS at the time was no more than 40 persons in a group and no more than 14 days in the same same campsite or drainage. I learned this morning that those are no longer issues. Congress passed special legislation several years ago specifically for the Rainbow Family that precluded them from the USFS permit requirement, length of stay and party size. The USFS does monitor their activities for violations of Forest Service regulations and other agencies monitor other state and federal rules, regulations and laws.

As for the ATV use, that is a growing problem for much of elk country. A few folks seem to ruin it for everyone else and the RMEF has spent a lot of resources encouraging responsible use and we have even contributed funding to closing illegal roads and trails along with funds for restoring the native grasses, forbs and shrubs that had been disturbed. We can only encourage the enforcement of the rules and regulations by the various agencies to slow down their impact on elk country.

Best regards!



**Tom Toman | Director of Conservation**  
Rocky Mountain Elk Foundation  
406-523-3443 phone | 406-523-4550 fax  
[tom@rmef.org](mailto:tom@rmef.org) | [www.rmef.org](http://www.rmef.org)

**From:** Brandon Hoffner  
**Sent:** Monday, June 29, 2009 9:59 AM  
**To:** Tom Toman  
**Subject:** FW: Jemez Mountains elk

Tom,

Here is another situation. Last year the Rainbows were on the BTNF and as I understood the situation, there was not much the FS or BLM could do to stop them. A lot of political stuff going on. Do you have response ready to go for the Rainbow situation?

Brandon Hoffner | Lands Program Manager

Colorado and New Mexico  
0329 Highland Drive

Howard, CO 81233

Rocky Mountain Elk Foundation  
719.942.3448 phone | 719.221.5382 cell  
[bhoffner@rmef.org](mailto:bhoffner@rmef.org) | [www.rmef.org](http://www.rmef.org)



Ex. (b)(6) & PA

This message is for the named person's use only. It may contain confidential, proprietary or legally privileged information. No confidentiality or privilege is waived or lost if you receive this message in error. Please immediately delete it and all copies of it from your system, destroy any copies of it and notify the sender by reply e-mail. You must not, directly or indirectly, use, disclose, distribute, print, or copy any part of this message or any attachments if you are not the intended recipient. The Rocky Mountain Elk Foundation reserves the right to monitor all e-mail communications through its network.

**From:** [REDACTED] [mailto:[REDACTED]]

**Sent:** Monday, June 29, 2009 9:51 AM

**To:** Brandon Hoffner; [REDACTED]; [REDACTED]; [REDACTED]; [REDACTED]; [REDACTED]

**Subject:** Jemez Mountains elk

I am very concerned about the Rainbow group that will be in the Jemez mountains this coming week, up to 12,000 people in the Elk calving and a deer fawn area - Park Vernado, Rock Creek Mesa, Forest roads 103 and 69 up to 69 and road 70, the west side of Mining mountain.

I don't know why the Forest Service is letting them do there gathering there, one of the worst place to have a group that big in the whole Cuba ranger district. Stop this from happening. This is insane, There are other areas that would be less of an impact for this group to use.

I am a hunter and a life time resident who knows that area well, also I have spent time up there in the past few weeks and have seen a lot of elk, deer and there newborn. With this large of a group this many days right in the middle of there home it will push all the big game animals out and ruin that whole area for a long time and may take a few years for the animals to use that area for a spring newborn area again.

Also there has been a group of atvs driving every old logging road to make a path over burms or around them and remove fallen trees to open all the roads, this is what they said they were doing but would not say why, but would open all roads weather they were closed by burms or not. they are also making there own roads, which go through steams and down streams along the wilderness trials and ruining the whole area. To have atv trails and roads every few hundred yards all over the forest will remove all big game animal life, look at unit 6c where dirt bikes and atvs roam that whole area- and have disrupted a delicate habitat area for years now.

That whole area of thé south and east of the San Pedro Wilderness is a very délicate area, great habitat and should be protected some how.

Please work with the Forest service to do something about the large groups like the Rainbow group and the Atv and off road group that could care less about the impact that they all have.

Thank you for your time.

