

SANTA FE NATIONAL FOREST

RAINBOW FAMILY GATHERING 2009



INCIDENT ACTION PLAN

June 28, 2009

INCIDENT OBJECTIVES	1. Incident Name Rainbow Family Gathering 2009	2. Date 06/28/2009	3. Time 0700
4. Operational Period 06/28/2009 Rainbow Unified Command Team Operational Period			
5. General Control Objectives for the Incident (include alternatives) <ul style="list-style-type: none"> • Provide for the safety and welfare of all incident staff through effective organization, good briefings, supervision within span-of-control, coordination of all resources, reliable communications, continuous situation awareness, and effective scene size-up prior to committing resources on any response. • Use all available resources and opportunities to show respectful regard for Rainbow Family participants. • Promote the safety and welfare of the public, protect infrastructure, and public property through information and enforcement of laws. • Provide timely response to all appropriate requests for assistance. • Ensure that incident personnel follow established Department of Agriculture guidelines regarding civil rights, and other Forest Service policies, practices, and procedures. • Provide effective incident management training experience for all trainee positions. • Mobilize the needed resources to manage the event activity safely, effectively, and efficiently. • Provide timely and accurate information to internal audiences, all levels of media, local communities, affected agencies, and partners. 			
6. Weather Forecast for Period <ul style="list-style-type: none"> • Keep informed of twice daily Santa Fe Zone Interagency Dispatch Center forecasts. 			
7. General Safety Message <ul style="list-style-type: none"> • Develop contingency planning to limit the potential spread of all infectious diseases, and to protect incident staff and the public from widespread exposure. • Observe driving regulations and personal limitations. • Reduce speed by 25% on Forest Roads • Honor Work/Rest requirements. (Work shifts restricted to 12 hours without IC prior approval). • Get adequate rest, hydration, and use your vitamins. • Santa Fe NF requires a hardhat to be worn anytime outside the vehicle when in the NF. 			
8. Attachments (mark if attached)			
<input checked="" type="checkbox"/> Organization List - ICS 203	<input checked="" type="checkbox"/> Medical Plan - ICS 206	<input checked="" type="checkbox"/> (Other)	
<input checked="" type="checkbox"/> Div. Assignment Lists - ICS 204	<input checked="" type="checkbox"/> Incident Map	<input type="checkbox"/>	
<input checked="" type="checkbox"/> Communications Plan - ICS 205	<input type="checkbox"/> Traffic Plan	<input type="checkbox"/>	
9. Prepared by (Planning Section Chief)	10. Approved by (Incident Commander)		

Organization Assignment List, ICS Form 203

ORGANIZATION ASSIGNMENT LIST		1. INCIDENT NAME	2. DATE PREPARED	3. TIME PREPARED
		Rainbow Gathering 2009	06/28/2009	0700
POSITION	NAME	4. OPERATIONAL PERIOD (DATE/TIME)		
5. INCIDENT COMMAND AND STAFF		9. OPERATIONS SECTION		
INCIDENT COMMANDER	Derek Padilla, [REDACTED]	Ex.(b)(6) & (b)(7)(C)		
DEPUTY	[REDACTED]	CHIEF [REDACTED]		
SAFETY OFFICER	Robert Beckley, Rick Albrecht-(alternate)	DEPUTY [REDACTED]		
INFORMATION OFFICER	Denise Ottaviano, Lawrence Lujan, Andrea Pruitt	a. BRANCH I- DIVISION/GROUPS		
LIAISON OFFICER	Dave Bervin-Emerg. Serv. Rep.	BRANCH DIRECTOR		
6. AGENCY REPRESENTATIVES		DEPUTY		
AGENCY	NAME	DIVISION/GROUP		
USFS	Erin Connelly	Daytime [REDACTED]		
Cuba VFD	Alissa Short	Evening [REDACTED] Ex.(b)(6)		
USMS	[REDACTED] Ex.(b)(6)	Night [REDACTED] & (b)(7)(C)		
NM State Police	[REDACTED] & (b)(7)(C)	Mounted [REDACTED]		
Sandoval Cnty SD	[REDACTED]	Resources Jim Eaton [REDACTED]		
Rio Arriba SD	[REDACTED]	Ex.(b)(2)(high)		
NM DHS & EM	Don Scott, James Mason	b. BRANCH II- DIVISIONS/GROUPS		
	Mary Magnusson-(off)	BRANCH DIRECTOR [REDACTED]		
7. PLANNING SECTION		DEPUTY [REDACTED]		
CHIEF	Andy Lang-(off)	DIVISION/GROUP [REDACTED]		
DEPUTY	[REDACTED]	DIVISION/GROUP [REDACTED]		
RESOURCES UNIT	[REDACTED]	DIVISION/GROUP [REDACTED]		
GISS (THSP)	Bill Griggs, Dave Isackson	DIVISION/GROUP [REDACTED]		
DOCUMENTATION UNIT	[REDACTED]	c. BRANCH III- DIVISIONS/GROUPS		
DEMOBILIZATION UNIT	[REDACTED]	BRANCH DIRECTOR [REDACTED]		
TECHNICAL SPECIALISTS	[REDACTED]	DEPUTY [REDACTED]		
8. LOGISTICS SECTION		DIVISION/GROUP [REDACTED]		
CHIEF	Richard Montoya [REDACTED]	d. AIR OPERATIONS BRANCH		
DEPUTY	Tom Fuchtman [REDACTED]	AIR OPERATIONS BR. DIR. [REDACTED]		
a. SUPPORT BRANCH	Ex.(b)(2)(high)	AIR TACTICAL GROUP SUP. [REDACTED]		
DIRECTOR	[REDACTED]	AIR SUPPORT GROUP SUP. [REDACTED]		
SUPPLY UNIT	[REDACTED]	HELICOPTER COORDINATOR [REDACTED]		
FACILITIES UNIT	[REDACTED]	AIR TANKER/FIXED WING CRD. [REDACTED]		
GROUND SUPPORT UNIT	[REDACTED]	10. FINANCE/ADMINISTRATION SECTION		
b. SERVICE BRANCH	[REDACTED]	CHIEF [REDACTED]		
DIRECTOR	[REDACTED]	DEPUTY [REDACTED]		
COMMUNICATIONS UNIT	Chris Reynolds, Curtis Steinman (THSP)	TIME UNIT Ex. (b)(6) & (b)(7)(C)		
MEDICAL UNIT	[REDACTED]	PROCUREMENT UNIT [REDACTED] Barbara Hatch Sophie Salaz		
FOOD UNIT	[REDACTED]	COMPENSATION/CLAIMS UNIT [REDACTED]		
PREPARED BY (RESOURCES UNIT)		COST UNIT [REDACTED]		

SAFETY & HEALTH REMINDERS **2009 RAINBOW GATHERING**
Santa Fe National Forest

June 28, 2009

Keep up the safe driving, Drive defensive at all times, Limit speed to match the road condition. Drive with head lights on. Watch out for animals.

Use good Officer Safety and protective measures, Use gloves and germ killing gel. Watch out for sharp objects, & needles. Properly dispose of all biohazard items in biohazard bags or sharp containers.

Communicate and have backup, Officer safety & Resource workers safety comes first. Make sure you have backup and how to contact them. Check your radio batteries before going out in the field.

Beware of all dogs. Look where you walk. Parvovirus is contagious. Decontaminate your Gloves and Field boots as needed.

L.E. units try to assist and cover Resource workers & County Public Health and Safety folks when they are in the area.

Resource workers please check in and out with Forest Dispatch or ICP. When parking and leaving your vehicle, Lock it up and let L.E. know where it is located, so they can keep an eye on it. Don't accept food or drinks from participants of the gathering.

Always be aware of your surroundings, and if you feel unsafe leave the area.

Follow all Safety Procedures – Let Common Sense Prevail!!!!

Thanks!
SAFETY

Your **National Weather Service** forecast

Cuba NM

Enter Your "City, ST" or zip code

NWS Albuquerque, NM
Point Forecast: Cuba NM
 36.03°N 106.96°W (Elev. 6898 ft)

Mobile Weather Information | [En Español](#)
 Last Update: 1:27 pm MDT Jun 27, 2009
 Forecast Valid: 3pm MDT Jun 27, 2009-6pm MDT Jul 3, 2009

Forecast at a Glance

This Afternoon	Tonight	Sunday	Sunday Night	Monday	Monday Night	Tuesday	Tuesday Night	Wednesday
30% Scattered Tstms Hi 82 °F	30% Scattered Tstms Lo 53 °F	50% Chance Tstms Hi 76 °F	20% Slight Chc Tstms Lo 50 °F	20% Slight Chc Tstms Hi 79 °F	20% Slight Chc Tstms Lo 50 °F	10% Slight Chc Tstms Hi 87 °F	10% Slight Chc Tstms Lo 49 °F	10% Slight Chc Tstms Hi 86 °F

Detailed 7-day Forecast

This Afternoon: Scattered showers and thunderstorms. Mostly cloudy, with a high near 82. North wind between 5 and 10 mph. Chance of precipitation is 30%.

Tonight: Scattered showers and thunderstorms. Partly cloudy, with a low around 53. North wind 5 to 15 mph becoming southeast. Chance of precipitation is 30%.

Sunday: A 50 percent chance of showers and thunderstorms. Mostly cloudy, with a high near 76. East wind 5 to 10 mph becoming south.

Sunday Night: A 20 percent chance of showers and thunderstorms. Mostly cloudy, with a low around 50. South wind around 5 mph becoming east.

Monday: A 20 percent chance of showers and thunderstorms. Mostly cloudy, with a high near 79. Calm wind.

Monday Night: A 20 percent chance of showers and thunderstorms. Mostly cloudy, with a low around 50.

Tuesday: A 10 percent chance of showers and thunderstorms. Partly cloudy, with a high near 87.

Tuesday Night: A 10 percent chance of showers and thunderstorms. Partly cloudy, with a low around 49.

Wednesday: A 10 percent chance of showers and thunderstorms. Partly cloudy, with a high near 86.

Wednesday Night: A 20 percent chance of showers and thunderstorms. Partly cloudy, with a low around 48.

Thursday: A 10 percent chance of showers and thunderstorms. Mostly cloudy, with a high near 89.

Thursday Night: A 20 percent chance of showers and thunderstorms. Mostly cloudy, with a low around 49.

Friday: A 20 percent chance of showers and thunderstorms. Mostly cloudy, with a high near 89.

Current Conditions [\[More Down\]](#)

Torreón
 Lat: 36.03 Lon: -106.95 Elev: 6909
 Last Update on Jun 27, 7:55 am MDT
 Not a Current Observation

Partly Cloudy

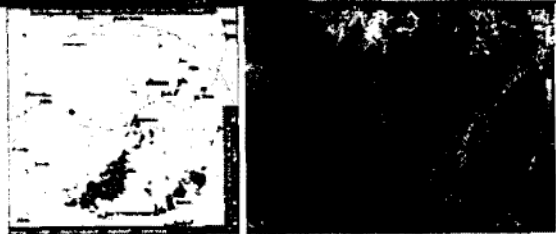
63 °F
(17 °C)

Humidity:	73 %
Wind Speed:	NE 7 MPH
Barometer:	NA
Dewpoint:	54 °F (12 °C)
Visibility:	20.00 mi.
More Local Wx:	3 Day History:

ALBUQUERQUE PTBL #2 Observation
 COYOTE RAWS Observation
 CUBA RAWS Observation
 DEADMAN PEAK RAWS Observation
 JARITA MESA RAWS Observation
 JEMEZ RAWS Observation
 LOS ALAMOS Observation
 STONE LAKE RAWS Observation
 TOWER RAWS Observation

For Distribution
 6/28/09

Radar and Satellite Images



Detailed Point Forecast [\[More Up\]](#)

Click Map for Forecast [Disclaimer](#)

National Weather Service Weather Forecast Office

Albuquerque, New Mexico



Main Page

SRH Home

Organization

Search

Enter Search Here

Go

Local forecast by "City, St" or zip code

City, St Go

Current Hazards
North & Central NM
National
Watches/Warnings
Submit Storm Report

Current Conditions
Observations
Satellite Images
Surface Maps
Rivers & Lakes AHPS
Precip Estimate
Hydrology

Radar Imagery
Albuquerque [ABX]
Cannon AFB [FDX]
Nationwide

Forecasts
Activity Planner
North & Central NM
Aviation
Fire Weather
Graphical Fcsts

Climate
Local
National
More...

Weather Safety
Storm Ready
Preparedness
Weather Radio
SKYWARN/Spotters

Additional Info
Coop Program
Our Office/Outreach
CWSU ZAB
Additional Links
Local Research
Road Conditions
Precip Summaries
Monthly Highlights
Photo Archive

Contact us
Weather Questions
ABQ Webmaster

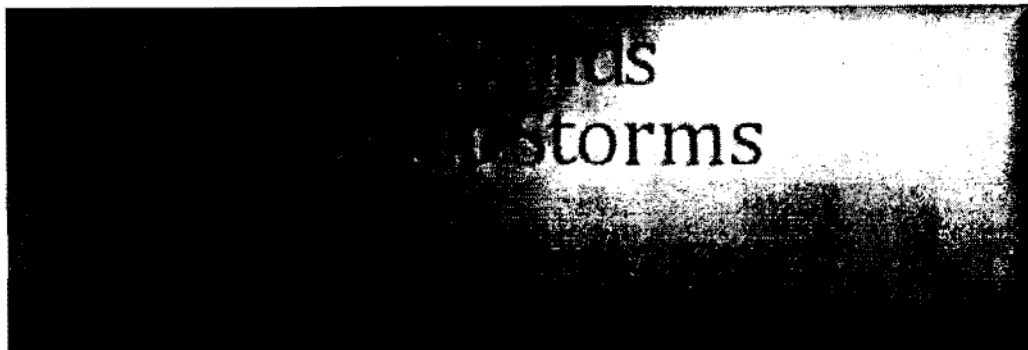


Photo by Keith Hayes



Downburst Winds

Downburst winds are a common byproduct of thunderstorms that affect New Mexico during the Summer Monsoon and are extremely hazardous. They, along with flash floods, are the two thunderstorm-related weather hazards most likely to produce property damage in the State of New Mexico.

A downburst is a non-rotating wind that is created by a column of sinking air in a thunderstorm that, after hitting ground level, spreads out in all directions and is capable of producing damaging straight-line winds of over 100 mph. These winds can often produce damage similar to, but distinguishable from, that caused by tornadoes.



Albuquerque golf course, Photo by Keith Hayes

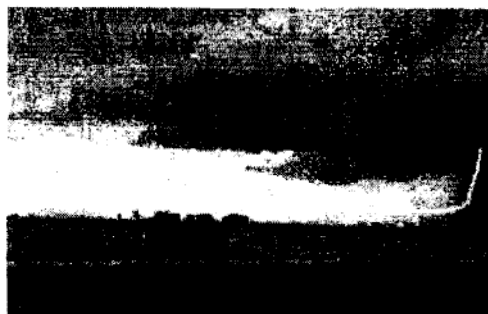
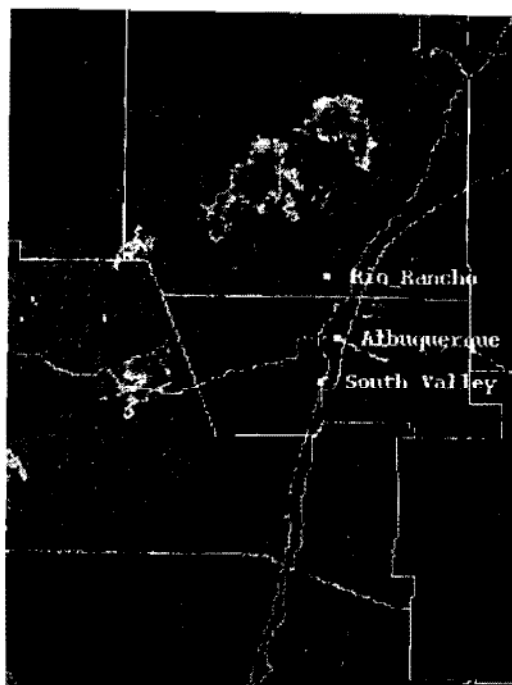
The physical properties of a downburst are completely different from those of a tornado. Often the damage is very localized, as in the photo above, or in some cases, can be widespread. This tree and a few others were uprooted on a golf course after thunderstorm downburst winds occurred. However, most of the trees in the golf course were not damaged.

When rain descends from a thunderstorm, evaporative cooling and drag act to strengthen the downward velocity of the downdraft. At times, the precipitation will evaporate prior to reaching the ground. Once the accelerating air reaches the ground, it will spread laterally, often with a vortex or "curl" on the lead edge. Downburst damage will radiate from a central point as the descending column spreads out when impacting the surface, whereas tornado damage tends toward convergent damage consistent with rotating winds.

To differentiate between tornado and downburst damage, an assessment is completed post-storm of the affected areas in order to determine the type of impact the winds had on structures and vegetation. If a downburst is found to have occurred, and the area impacted with 2.5 mi or less, it is termed a Microburst, whereas if the impacted area is greater than 2.5 mi, it is then termed a Macroburst.

The manifestation of downburst winds is often visible on radar imagery as arc-shaped images that move away from thunderstorms. As the winds spread away from the parent thunderstorms, the leading edge of the winds, also known as an "outflow boundary" or "gust front", often denote the presence of strong winds and potential areas to monitor for new storm formation. The winds that are associated with these features are also referred to as "straight-line winds."

In the image to the right, outflow boundaries are evident to the southeast of the strongest thunderstorms, but there are also outflow boundaries associated with cells not visible on the image. Not all outflows are strong enough to do damage.



Northern Eddy County, Photo by Keith Hayes

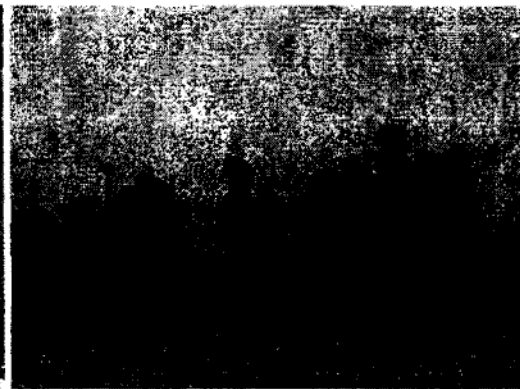
Although difficult to see in this image, downburst winds in New Mexico can often result in blowing dust. The downdraft of the thunderstorm (on the right side of the image) has produced high winds and an area of dust (left side of the image at the end of the yellow arrow). In addition to wind damage, downburst winds can produce local dust storms that can reduce visibilities to near zero in less than a minute.

Dust Storms

While downburst winds often do produce local, short-lived areas of blowing dust, larger convective clusters can result in wind spread areas of blowing dust, at times persisting for 30 to 60 minutes. The photos below are from El Paso (left) and Santa Teresa (right) and are examples of more extreme dust storms in southern New Mexico.



El Paso, Photo by Charlotte Rogash

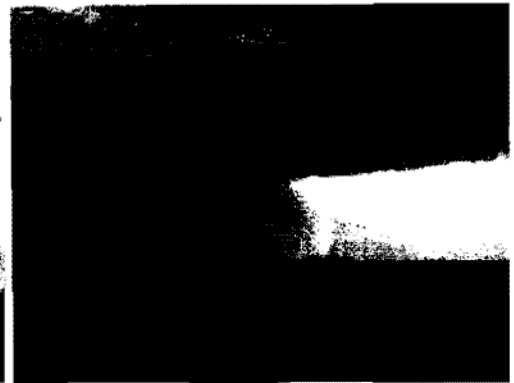


Santa Teresa, Photo by Charlotte Rogash

The most extreme cases of dust storms in New Mexico occur in the extreme southern portions of the state, and are referred to as "haboobs." A haboob is an extreme dust storm that can persist for 1 to 3 hours. The onset of the dust is extreme - it is virtually a wall of dust, as shown in the photos below from near Columbus, NM (left) and El Paso, TX (right).



Near Columbus, Photo by Len Zgonina



Near El Paso, Photo by NWS EPZ

What Actions Can I Take?

Downburst Wind Safety:

- Unlike other parts of the country, thunderstorm wind gusts here in New Mexico often exceed 40 MPH. The strongest downburst wind gusts can exceed 100 MPH, and can produce damage similar to a tornado! Anytime a thunderstorm approaches, no matter how weak it seems, move indoors to avoid flying debris. Winds rushing down from a thunderstorm can develop very quickly.
- When a Severe Thunderstorm Warning is in effect, it means damaging wind gusts of 58 MPH or higher are likely. Move into a central interior room. Stay away from windows.
- Unanchored mobile homes are NOT safe in any severe thunderstorms, and even anchored mobile homes can be heavily damaged in winds over 80 MPH. Move to a more sturdy structure.
- Stay away from trees. The vast majority of people are killed or injured in severe thunderstorms when trees fall on them, from flying debris, or from downed power lines.
- Never touch a downed power line, even if it appears dead. Assume that it is live. Call for help instead.
- Downburst winds can travel dozens of miles away from the thunderstorm that produced them. If the wind suddenly shifts and blows toward you from an approaching storm, while the temperature either becomes much colder or much hotter, the winds are likely to become even stronger. Move indoors!
- Before the monsoon season, it is a good idea to either secure loose outdoor furniture and garbage cans, or move them indoors. These are frequently blown around in our summer thunderstorms - even the weakest ones.

Dust Storm Safety:

- Straight line winds in any thunderstorm can lift huge clouds of dust and reduce visibilities to near zero in seconds, which can quickly result in deadly, multi-vehicle accidents on roadways.
- Dust storms are more common in the early part of the Monsoon, near agricultural areas, and around Gallup on Interstate 25 in McKinley county. Use caution in these areas any time thunderstorms are nearby.
- If you encounter a dust storm, pull off the road immediately. Turn off your headlights and taillights, put your vehicle in "PARK," and take your foot off the brake. Other motorists may tend to follow taillights in an attempt to get through the dust storm, and may strike your vehicle from behind.
- Dust storms in the northern portion of New Mexico usually last a few minutes, and up to an hour at most.

Across extreme southern New Mexico, haboobs can persist for 1 to 2 hours resulting in extremely hazardous driving conditions. In either case, stay where you are until the dust storm passes.



Storm Data has listed 20 wind events as either dry or wet microbursts since 1990. There are likely many other thunderstorm wind events that could be classified as microbursts or macrobursts. Winds up to 80 mph were reported with a microburst in Chama on June 2, 1998.

On a somewhat larger scale, on August 4, 1998, a line of thunderstorms moving off the San Andres Range produced a macroburst with winds that measured 112 mph at the White Sands Missile Range. The anemometer at Holloman AFB recorded speeds of 75 mph before breaking! The core of strongest winds moved over uninhabited military land, but considerable tree damage and some structural damage occurred well to the east near Alamogordo in Bolles Acres. It was also reported that a vehicle was blown sideways for two blocks.

Storm Data also lists 6 dust storms since 1990. A dust storm in Lordsburg on the 4th of July, 1974 injured 13 people!



Downbursts are particularly strong downdrafts from thunderstorms. Downbursts in air that is precipitation free or contains virga are known as dry downbursts; those accompanied with precipitation are known as wet downbursts. Most downbursts are less than 2.5 miles in extent; these are called microbursts. Downbursts larger than 2.5 miles in extent are sometimes called macrobursts. Downbursts can occur over large areas. In the extreme case, a derecho (a widespread and long-lived, violent convectively induced straight-line windstorm that is associated with a fast-moving band of severe thunderstorms in the form of a squall line) can cover a huge area more than 200 miles wide and over 1000 miles long, lasting up to 12 hours or more, and is associated with some of the most intense straight-line winds, but the generative process is somewhat different from that of most downbursts.

2009 RAINBOW IAP MEDICAL PLAN

Emergency Procedures Checklist

1. Conduct Size-up of the situation to include:

- Nature of the problem, i.e., injury or illness.
- Number of people involved & crew identification.
- DO NOT give names of individuals over the radio
- Chief complaints, patient assessment (refer: to IRPG page 35).

2. Contact Santa Fe Dispatch Center

- Clear all radio traffic.
- Point of contact will relay patient information & type of evacuation requested.
- Point of contact will relay Lat. & Long. for pick up location or major landmark. Lat. & Long., UTM's or Legal location are required for Helicopter life flights.

3. For an ALS Med-EVAC Request:

- Point of contact will notify Incident Commander and Santa Fe Dispatch Center for ALS-EVAC.
(* See below for locations on Air Ambulances*).
- If an outside Air Ambulance is requested, Santa Fe Dispatch Center initiates call. Santa Fe Dispatch informs Incident Commander and point of contact on estimated time of arrival and destination of patient.
- Point of contact will inform Santa Fe Dispatch Center with patient lift-off.
- Non-emergency radio Communications resume when emergency is complete, Santa Fe Dispatch Center will announce to all units.

4. For a Medical Transport request:

- Incident Commander or point of contact will notify Santa Fe Dispatch Center for Medical Transport (*See below for locations Medical Transports*) request.
- Incident Commander or point of contact will identify and relay pick-up site.
- Santa Fe Dispatch Center will coordinate patient pick-up designated medical transport.
- Santa Fe Dispatch Center relays ETA to pick-up site.
- Santa Fe Dispatch Center will announce to all units to resume normal radio operations.

Hospitals/Clinics:

Name	Address	Travel Time		Phone	Helispot		Burn Center	
		Air	Ground		Yes	No	Yes	No
Checker Board Area Health Systems	6349 HWY. 550 CUBA, NM 87013	15m	60m	911 (Emergency) (505) 289-3291	X			X
UNM Hospital	2211 Lomas NE, Albuquerque	35m	1.5 hrs	(505)272-2411 (Emergency) (505)272-2111	X		X	
Presbyterian Hospital	1100 Central Ave. S.E. Albuquerque, NM	35m	1.5 hrs	505-841-1234	X			X
St. Vincent	Santa Fe	25m	2.5h	(505)820-5250	X			X

Designated Helispots:

- [REDACTED] ([REDACTED]): [REDACTED]
 - [REDACTED] [REDACTED]
1. This an emergency landing zone only as it is a “power in, power out” helispot. Use only as last alternative.
- Meadow Family Gathering Helispot: [REDACTED]
 - Cuba Admin Site, Warehouse, Engine Station Helispot: [REDACTED]

EMTs:

HELICOPTER AMBULANCE SERVICE IN & ADJACENT TO YOUR AREA

LOCATION	FACILITY	CALL SIGN	TYPE A/C	PHONE NUMBER	Avg. Flight Time (minutes)
PHI Air Medical Med 50, 51	Albuquerque, NM	N351LG	Eurocopter AS350-B3 "A-Star"	1-800-633-5438	45 - 70
PHI Air Medical Med 52	Santa Fe, NM	N352LG	Eurocopter AS350-B3 "A-Star"	1-800-633-5438	15 - 40
San Juan Regional Air Care 1	Farmington, NM	N911NM	Bell 222UT	1-505-609-2000 Main # 1-505-609-6280 Patient Service	45 - 70
PHI Air Medical Med 53	Grants, NM	N353LG	Eurocopter AS350-B3 "A-Star"	1-800-633-5438	60 - 80
Mercy Memorial Center	Durango, CO	N403CF Care flight 4	Agusta 119 Koala	1-800-345-2516	45 - 70

GROUND AMBULANCE SERVICE

FACILITY/LOCATION	COMMERCIAL PHONE	24 HOUR PHONE	ETA
CUBA RESCUE 125	CUBA, NM – EAST CORDOVA LANE	(505) 289-3456 or 911 or 1-800-898-2876	YES
CUBA AMBULANCE	CUBA, NM 6349 HWY 550	(505) 289-3456 or 911 or 1-800-898-2876	YES

AIR AMBULANCE SERVICE

FACILITY/LOCATION	ADDRESS/LOCATION	24 HOUR PHONE
AIR CARE	FARMINGTON, NM	1-800-452-9990
LIFEGUARD AIR EMERGENCY SERVICES	ALBUQUERQUE, NM	(505) 272-3116
CAREFLIGHT	SANTA FE, NM	1-800-4521
TRI-STATE CARE FLIGHT	DURANGO, CO	1-800-800-0900 Disp. 970-382-7790 Office

DOH Nursing Response Strategic Plan, Rainbow Family Gathering, June-July 2009

Local Hospital Contacts:

Lovelace Westside Emergency Room	[REDACTED]	[REDACTED]
	Lead technician, ER	
	[REDACTED]@lovelace.com	
	[REDACTED] MD	[REDACTED]
PMS, Cuba, New Mexico	[REDACTED]	[REDACTED]
	[REDACTED], RN	
Presbyterian Urgent Care, Rio Rancho, NM	[REDACTED]	[REDACTED]
	[REDACTED]@phs.org	
EMS Services, Cuba	[REDACTED]	[REDACTED]
Cuba Fire Department	[REDACTED]	[REDACTED]
UNM Psychiatric Emergency	[REDACTED], RN	[REDACTED]
Presbyterian Downtown	[REDACTED], RN	[REDACTED]
UNM Emergency Room	[REDACTED], RN	[REDACTED]
	[REDACTED]@salu.unm.edu	
Lovelace Downtown ER	[REDACTED] RN	[REDACTED]
San Juan Regional Medical Center, ER	[REDACTED], RN	[REDACTED]
	[REDACTED]@SJRMC.net	
	[REDACTED], RN Infectious Disease	
	[REDACTED]@SJRMC.net	

Nursing Response Strategic Plan:

[REDACTED], RN, BSN
[REDACTED], RN

1. Attend inter-agency briefings
2. Establish relationships with Forest Service, EMS, local hospitals and urgent care, Rainbow Family CALM
3. Provide a consistent physical presence at the gathering/establish trust and exchange of information to the extent possible with CALM workers
4. Assist DOH Epidemiology infectious disease surveillance, and intervention if necessary (e.g. sample collection, medication administration, isolation and quarantine)
5. Stock local Public Health Office with equipment specified by Epidemiology Department
6. Provide on-call support as needed
7. Participate in education outreach to Rainbow kitchens and CALM
8. Provide adult immunizations of Hep B and Hep A to Forest Service personnel as requested
9. Accompany Epidemiology teams to the gathering in order to provide a consistent contact and facilitate exchange of information.
10. Maintain regular contact and exchange of information with nurse managers at local Emergency Rooms in order to facilitate enhanced syndromic surveillance as recommended by DOH Infectious Disease Epidemiology Bureau.
11. Inform DOH Pharmacy and Laboratory staff as needed regarding laboratory sampling activities and any recommended distribution of medication.

COMMUNICATION PLAN

A. Radio Frequencies:

1. Command Frequency(s):

- **PRIMARY:** SFNF RPT - RX= [REDACTED] TX= [REDACTED]
Tone = [REDACTED] ([REDACTED])
- **SECONDARY:** SFNF RPT - RX= [REDACTED] TX= [REDACTED]
Tone = [REDACTED] ([REDACTED])

2. Tactical Frequency(s)

- **PRIMARY:** Tac1 - [REDACTED] RX/TX

3. Air Operations Frequency(s): Air to Ground - [REDACTED]

B. Verizon Identified Best Cellular Phone Coverage Sites:

1. 36.0123 x 106.7698
2. 36.0411 x 106.7588
3. 36.0418 x 106.7837

CHANNEL	NAME	USE

Ex. (b)(2)(high)

RAINBOW
ICP PHONE NUMBERS

06/20/09

Information:
505-438-5685 For the Public Only



Logistics:



Finance



Plans



Law Enforcement



Communications



Briefing Room
(Homeland Security trailer)



To call Cuba Ranger District dial 7 and last 4 digits.
To call Santa Fe NF SO dial 7 and last 4 digits.
All other calls dial 9 and all other digits.

To set up your voicemail and retrieve your voicemail, press the "messages"
button (envelope) and then the code.

Ex. (b)(2)(high)

Radio Call Signs for Incident

Ex.(b)(6)
&(b)(7)(C)



Ex.(b)(2)(high)

CHRIS REYNOLDS (Communications Unit Leader)
TOM FLORICH
BOB BECKLEY
REBECCA ROOF
MARCIA ROSE-RITCHIE



Ex.(b)(6)
&(b)(7)(C)

U.S MARSHALLS CALL SIGNS	
NAME	CALL SIGN
[REDACTED]	[REDACTED]
	[REDACTED]
	[REDACTED]
	[REDACTED]
	[REDACTED]

Ex.(b)(2)(high)

1. OPERATIONS Resources		2. DIVISION/GROUP Resources		ASSIGNMENT LIST					
3. INCIDENT NAME Rainbow Family Gathering 2009			4. OPERATIONAL PERIOD Daytime Operations DATE <u>6/28/2009</u> TIME <u>0800-2000</u>						
OPERATIONS CHIEF BRANCH DIRECTOR		Jim Eaton - [REDACTED]		5. OPERATIONAL PERSONNEL DIVISION/GROUP SUPERVISOR AIR TACTICAL GROUP SUPERVISOR		Jim Eaton - [REDACTED]			
6. RESOURCES ASSIGNED TO THIS PERIOD									
STRIKE TEAM/TASK FORCE/ RESOURCE DESIGNATOR	CALL #	LEADER	NUMBER PERSONS	TRANS. NEEDED	PICKUP PT./TIME	DROP OFF PT./TIME			
Permit Administrator	[REDACTED]	Marcia Rose-Ritchie	1	N					
Permit Administrator	[REDACTED]	Rebecca Roof	1	N					
Operating Plan/Permit Admin.	[REDACTED]	Tom Florich	1	N					
Fire	[REDACTED]	Jarod Taylor	1	N					
Wildlife	[REDACTED]	Ramon Borrego	1	N					
Fire	[REDACTED]	Brian McCoy	1	N					
Fire	[REDACTED]	Rick Duran	1	N					
7. OPERATIONS									
<ul style="list-style-type: none"> • Monitor kitchens and water filtering. • Recheck that 20' fire pit by Palomas Creek & sweat lodge is completely moved. • Recheck flagging around Venado spring. Ongoing. • Reissued 5 shuttle permits, 1 CALM permit, 1 supply permit, and 2 kitchen permits Friday. The Family wants one more kitchen permit for Fat Kids, and one more CALM permit (reality). Family wants 10 more shuttle permits (fantasy). • Smokey Bear pins are being requested. Prepare Information/Education programs and present to Kid Village (Information?). 									
8. SPECIAL INSTRUCTIONS									
<ul style="list-style-type: none"> • Maintain situational awareness with LEO personnel and incident command post. 									
9. DIVISION/GROUP COMMUNICATIONS SUMMARY									
FUNCTION		FREQ.	SYSTEM	CHAN.	FUNCTION		FREQ.	SYSTEM	CHAN.
COMMAND	LOCAL	[REDACTED]	SF repeater		SUPPORT	LOCAL			
	REPEAT		[REDACTED]			REPEAT			
DIV./GROUP TACTICAL		[REDACTED] TX/RX	Tac 1		GROUND TO AIR				
PREPARED BY (RESOURCE UNIT LEADER)					APPROVED BY (PLANNING SECT. CH.)			DATE	TIME

1. OPERATIONS Law Enforcement		2. DIVISION/GROUP Daytime		ASSIGNMENT LIST					
3. INCIDENT NAME Rainbow Family Gathering 2009			4. OPERATIONAL PERIOD Daytime Operations DATE <u>6/28/2009</u> TIME <u>0800-2000</u>						
Ex. (b)(6) & (b)(7)(C) OPERATIONS CHIEF [REDACTED] BRANCH DIRECTOR [REDACTED]		5. OPERATIONAL PERSONNEL DIVISION/GROUP SUPERVISOR [REDACTED] AIR TACTICAL GROUP SUPERVISOR [REDACTED]			Ex.(b)(6) & (b)(7)(C) [REDACTED] Ex. (b)(2)(high)				
6. RESOURCES ASSIGNED TO THIS PERIOD									
STRIKE TEAM/TASK FORCE/ RESOURCE DESIGNATOR	CALL #	LEADER	NUMBER PERSONS	TRANS. NEEDED	PICKUP PT./TIME	DROP OFF PT./TIME			
K-9 Unit	Ex. (b)(2)(high)	Ex. (b)(6) & (b)(7)(C)	1	N	0800	2000			
	[REDACTED]	[REDACTED]	1	N	0800	2000			
K-9 Unit	[REDACTED]	[REDACTED]	1	N	0800	2000			
	[REDACTED]	[REDACTED]	1	N	0800	2000			
Patrol	[REDACTED]	[REDACTED]	1	N	0800	2000			
	[REDACTED]	[REDACTED]	1	N	0800	2000			
7. OPERATIONS									
<ul style="list-style-type: none"> • Operate as Unified Command and manage as one Incident Command Team. • Manage parking along roads 69 and 70 to maintain access. • Monitor one way travel along FR 70 between Welcome Home and San Gregorio. • Assist Resource Advisors, Santa Fe NF, local EMS, and County health officials as requested. • Insure compliance with all federal and state laws. 									
8. SPECIAL INSTRUCTIONS									
<ul style="list-style-type: none"> • Maintain situational awareness with resource personnel and incident command post. 									
Ex. (b)(2)(high) 9. DIVISION/GROUP COMMUNICATIONS SUMMARY									
FUNCTION		FREQ.	SYSTEM	CHAN.	FUNCTION		FREQ.	SYSTEM	CHAN.
COMMAND	LOCAL	[REDACTED]	SF repeater		SUPPORT	LOCAL			
	REPEAT	[REDACTED]	[REDACTED]			REPEAT			
DIV./GROUP TACTICAL		[REDACTED] TX/RX	T a c 1		GROUND TO AIR				
PREPARED BY (RESOURCE UNIT LEADER)				APPROVED BY (PLANNING SECT. CH.)			DATE	TIME	

1. OPERATIONS Law Enforcement		2. DIVISION/GROUP Evening		ASSIGNMENT LIST			
3. INCIDENT NAME Rainbow Family Gathering 2009			4. OPERATIONAL PERIOD Daytime Operations DATE <u>6/28/2009</u> TIME <u>1200-2400</u>				
Ex. (b)(6) & (b)(7)(C) OPERATIONS CHIEF [REDACTED] BRANCH DIRECTOR _____		5. OPERATIONAL PERSONNEL DIVISION/GROUP SUPERVISOR [REDACTED] AIR TACTICAL GROUP SUPERVISOR _____		Ex. (b)(6) & (b)(7)(C) [REDACTED] Ex. (b)(2)(high)			
6. RESOURCES ASSIGNED TO THIS PERIOD							
STRIKE TEAM/TASK FORCE/ RESOURCE DESIGNATOR	CALL #	LEADER	NUMBER PERSONS	TRANS. NEEDED	PICKUP PT./TIME	DROP OFF PT./TIME	
K-9 Unit	Ex. (b)(2)(high)	Ex. (b)(6) & (b)(7)(C)	1	N	1200	2400	
	[REDACTED]	[REDACTED]	1	N	1200	2400	
K-9 Unit	[REDACTED]	[REDACTED]	1	N	1200	2400	
	[REDACTED]	[REDACTED]	1	N	1200	2400	
Patrol	[REDACTED]	[REDACTED]	1	N	1200	2400	
	[REDACTED]	[REDACTED]	1	N	1200	2400	
	[REDACTED]	[REDACTED]			1200	2400	
7. OPERATIONS							
<ul style="list-style-type: none"> • Operate as Unified Command and manage as one Incident Command Team. • Manage parking along roads 69 and 70 to maintain access. • Monitor one way travel along FR 70 between Welcome Home and San Gregorio. • Assist Resource Advisors, Santa Fe NF, local EMS, and County health officials as requested. • Insure compliance with all federal and state laws. 							
8. SPECIAL INSTRUCTIONS							
<ul style="list-style-type: none"> • Pay special attention when driving back down at night. Wildlife such as deer and elk are prevalent in the area. 							
Ex. (b)(2)(high) 9. DIVISION/GROUP COMMUNICATIONS SUMMARY							
FUNCTION	FREQ.	SYSTEM	CHAN.	FUNCTION	FREQ.	SYSTEM	CHAN.
COMMAND	LOCAL	[REDACTED]	SF repeater	SUPPORT		LOCAL	
	REPEAT	[REDACTED]	[REDACTED]			REPEAT	
DIV/GROUP TACTICAL	[REDACTED] TX/RX	T a c 1		GROUND TO AIR			
PREPARED BY (RESOURCE UNIT LEADER)			APPROVED BY (PLANNING SECT. CH.)		DATE	TIME	

1. OPERATIONS Law Enforcement	2. DIVISION/GROUP Night	ASSIGNMENT LIST
---	-----------------------------------	------------------------

3. INCIDENT NAME Rainbow Family Gathering 2009	4. OPERATIONAL PERIOD Daytime Operations DATE <u>6/28/2009</u> TIME <u>2400-1200</u>
--	--

OPERATIONS CHIEF BRANCH DIRECTOR	Ex. (b)(6) & (b)(7)(C) [REDACTED]	5. OPERATIONAL PERSONNEL DIVISION/GROUP SUPERVISOR AIR TACTICAL GROUP SUPERVISOR	Ex. (b)(6) & (b)(7)(C) [REDACTED] Ex. (b)(2)(high)
---	--------------------------------------	---	---

6. RESOURCES ASSIGNED TO THIS PERIOD

STRIKE TEAM/TASK FORCE/ RESOURCE DESIGNATOR	CALL #	LEADER	NUMBER PERSONS	TRANS. NEEDED	PICKUP PT./TIME	DROP OFF PT./TIME
K-9 Unit	Ex. (b)(2)(high)	Ex. (b)(6) & (b)(7)(C)	1	N	2400	1200
	[REDACTED]	[REDACTED]	1	N	2400	1200
K-9 Unit	[REDACTED]	[REDACTED]	1	N	2400	1200
	[REDACTED]	[REDACTED]	1	N	2400	1200
Patrol	[REDACTED]	[REDACTED]	1	N	2400	1200
	[REDACTED]	[REDACTED]	1	N	2400	1200

- 7. OPERATIONS**
- Operate as Unified Command and manage as one Incident Command Team.
 - Manage parking along roads 69 and 70 to maintain access.
 - Monitor one way travel along FR 70 between Welcome Home and San Gregorio.
 - Assist Resource Advisors, Santa Fe NF, local EMS, and County health officials as requested.
 - Insure compliance with all federal and state laws.

- 8. SPECIAL INSTRUCTIONS**
- Pay special attention when driving back after a long night shift.
 - Monitor fatigue.

Ex. (b)(2)(high) **9. DIVISION/GROUP COMMUNICATIONS SUMMARY**

FUNCTION	FREQ.	SYSTEM	CHAN.	FUNCTION	FREQ.	SYSTEM	CHAN.
COMMAND	LOCAL REPEAT	SF repeater		SUPPORT	LOCAL REPEAT		
DIV/GROUP TACTICAL	[REDACTED] TX/RX	T a c 1		GROUND TO AIR			

PREPARED BY (RESOURCE UNIT LEADER)	APPROVED BY (PLANNING SECT. CH.)	DATE	TIME
------------------------------------	----------------------------------	------	------

Ex. (b)(2)(high)

1. OPERATIONS Law Enforcement		2. DIVISION/GROUP Mounted		ASSIGNMENT LIST				
3. INCIDENT NAME Rainbow Family Gathering 2009			4. OPERATIONAL PERIOD Daytime Operations DATE <u>6/28/2009</u> TIME <u>0800-2000</u>					
Ex. (b)(6) & (b)(7)(C) OPERATIONS CHIEF [REDACTED] BRANCH DIRECTOR _____		5. OPERATIONAL PERSONNEL DIVISION/GROUP SUPERVISOR [REDACTED] AIR TACTICAL GROUP SUPERVISOR _____		Ex.(b)(6) & (b)(7)(C) [REDACTED] Ex. (b)(2)(high)				
6. RESOURCES ASSIGNED TO THIS PERIOD								
STRIKE TEAM/TASK FORCE/ RESOURCE DESIGNATOR	CALL #	LEADER	NUMBER PERSONS	TRANS. NEEDED	PICKUP PT./TIME	DROP OFF PT./TIME		
Mounted	Ex. (b)(2)(high)	Ex. (b)(6) & (b)(7)(C)	1	N	0800	2000		
Mounted	[REDACTED]	[REDACTED]	1	N	0800	2000		
Mounted	[REDACTED]	[REDACTED]	1	N	0800	2000		
7. OPERATIONS <ul style="list-style-type: none"> • Operate as Unified Command and manage as one Incident Command Team. • Manage parking along roads 69 and 70 to maintain access. • Monitor one way travel along FR 70 between Welcome Home and San Gregorio. • Assist Resource Advisors, Santa Fe NF, local EMS, and County health officials as requested. • Insure compliance with all federal and state laws. • Will help Resources GPS paths and trails. 								
8. SPECIAL INSTRUCTIONS <ul style="list-style-type: none"> • Maintain situational awareness with resource personnel and incident command post. 								
Ex. (b)(2)(high) 9. DIVISION/GROUP COMMUNICATIONS SUMMARY								
FUNCTION		FREQ.	SYSTEM	CHAN.	FUNCTION	FREQ.	SYSTEM	CHAN.
COMMAND	LOCAL	[REDACTED]	SF repeater		SUPPORT			
	REPEAT							
DIV./GROUP TACTICAL		[REDACTED] TX/RX	Tac 1		GROUND TO AIR			
PREPARED BY (RESOURCE UNIT LEADER)				APPROVED BY (PLANNING SECT. CH.)			DATE	TIME

