

Montana Department of Military Affairs
Disaster & Emergency Services Division
State Emergency Coordination Center

1100 N. Main - P.O. Box 4789
Helena, MT 59604-4789
Telephone: (406) 841-3911 Fax: (406) 841-3965

Situation Report for June 9, 2000 (issued @ 11:00 hrs.)

North American Rainbow Family Gathering 2000

I. - Background Information

- The **Rainbow Family** is a group of individuals with no distinct or expressed leadership consisting of “peace activists” who gather in large numbers annually in North America. Historically these gatherings attracted over 25,000 people, on National Forest lands for several weeks each year. This movement started in 1972 and has continued annually. The peak participation is normally July 1st through the 7th.
- Prior to the annual gathering, a “Spring Council” convenes to formally establish the annual site location. The “Spring Council” is occurring now in the Wisdom / Jackson area of Beaverhead County. Historically, the “Spring Council” is held in close proximity of the annual gathering location.

II. - Current Conditions

- There are currently between 300 and 500 people attending the Spring Council in the Jackson, Montana area.
- There are two meetings scheduled in Dillon with local officials, state officials and others.
 - Sunday, June 11 meeting to discuss health issues
 - Monday, June 12 meeting for Incident Planning issues
- The USFS management team will activate by Monday June 12

III. - Summary of State Resources Committed

- There has been a request from Beaverhead County for 2 Agency Representatives, one to work with the USFS Management Team and the other with the Local Management Team
- The SECC remains at a Level I status.

State DES will continue to monitor conditions and is prepared to provide incident support through the DES Duty Officer in Helena. The Duty Officer is available 24 hrs and may be reached at (406) 841-3911. Media inquiries regarding the history of this event, or for specific information related to the management of this incident, should be directed to the appropriate local jurisdiction or to the DES Public Information Officer [at (406) 841-3911 during regular office hours 8:00 am – 5:00 p.m.].

Montana Department of Military Affairs
Disaster & Emergency Services Division
State Emergency Coordination Center

1100 N. Main - P.O. Box 4789

Helena, MT 59604-4789

Telephone: (406) 841-3911

Fax: (406) 841-3965

Situation Report for June 12, 2000 (issued @ 16:30 hrs.)

North American Rainbow Family Gathering 2000

I. - Background Information

- The **Rainbow Family** is a loosely knit group of 1960's style "hippies", "anti-war, Viet Nam veterans", "peace activists", and other individuals who claim to have no direct leadership or organization. Beginning in 1972 and continuing through 1999, the "North American Rainbow Family of Living Light" has gathered each year on National Forest lands where they "come together to pray for world peace and the healing of Mother Earth". Historically these gatherings have attracted as many as 25,000 people and lasted several weeks. Peak participation is normally July 1st through the 7th. Following their 1999 gathering on the Allegheny National Forest in Pennsylvania, the Rainbow Family announced that its 2000 gathering would take place somewhere in "western Montana or Idaho".
- Since early this year, the **USDA Forest Service** and the **Montana Department of Justice** have been collecting information about the upcoming gathering and trying to help prepare local civil authorities throughout western and south-central Montana for the potential impacts should the gathering occur near their communities.
- After it became apparent that the 2000 Family Gathering would most likely take place within Beaverhead County, representatives from the USFS Region One, MT-DOJ, and MT-DES met on June 6th with elected officials from Beaverhead County, the City of Dillon, the Bureau of Land Management, and the Beaverhead National Forest to discuss local preparations for that event.
- On June 10th, the Rainbow's officially convened "**Spring Council**" near Jackson, MT. Spring Council is a meeting at which they formally establish the site of the annual gathering. ("Spring Council" has traditionally been held in relative close proximity to the eventual location of the gathering.) Although no formal decision has been posted on their "unofficial" Internet site, it now appears that the Rainbow Family has decided to conduct their 2000 gathering in the Saginaw Creek drainage of the Beaverhead National Forest.

II. - Current Conditions

- Estimates from local law enforcement officials indicate there are currently between 400 and 500 Rainbow Family members gathered at the site on Beaverhead National Forest lands in Saginaw Creek. The number of "Rainbows" attending this gathering is expected to grow dramatically over the next several weeks.
- Local merchants and businesses are already beginning to report minor problems (i.e., mostly loitering and shop-lifting). Local medical and health officials are reporting some increases in requests for services.
- The USDA Forest Service has assigned a multi-disciplinary Incident Management Team headed

b2
b6
b7 c c e

by Incident Commander [REDACTED] (a US Forest Service [REDACTED] from their Regional Office in Missoula). That team is specifically charged with managing the environmental, economic, and social impacts associated with such a large gathering on National Forest lands. They are expected to be in place and operational sometime today.

- The Forest Service Incident Management Team anticipates involving local Beaverhead County officials in a "Unified Command". (Any involvement by agencies or personnel from the State of Montana will be at the specific request of local authorities.)
- To date there have been several "coordination" meetings between Beaverhead County officials and representatives of various state agencies. As a result of these meetings, MT-DES anticipates the distinct possibility of receiving requests from Beaverhead County for some form of assistance (between now and July 10th) by each of the following state agencies:
 - MT-DOJ (Division of Criminal Investigation, and Highway Patrol)
 - MT-DES
 - MT-DPHHS
 - MT-DEQ
 - MT-DNRC
 - MT-DOT
 - MT-DFWP
- On June 12th, 2000, Beaverhead County Commissioners signed Resolution No. 2000-11 in which they declared a local emergency pursuant to 10-3-(402 or 403) MCA.

III. - Summary of State Resources Committed

- Based on the nature and magnitude of impacts experienced by other communities associated with previous Rainbow Family Gatherings, Governor Marc Racicot signed an Executive Order declaring an emergency within Beaverhead County.
- Upon receipt of a verbal request for assistance from Beaverhead County, MT-DES assigned 2 Agency Representatives to the Dillon area. One will work with the USFS Incident Management Team at their Incident Command Post, and the other will work at the Beaverhead County Emergency Operations Center.
- MT-Department of Public Health and Human Services is providing direct support to Beaverhead Co. health officials (i.e., Todd Damrow, et al).
- MT-Department of Justice is assisting local law enforcement authorities through its ongoing information gathering activities.
- The State Emergency Coordination Center has been activated at a Level II status. The SECC will be staffed during normal business hours, and will issue a Daily Situation Report (for as long as conditions warrant).

State DES will continue to monitor conditions and is prepared to provide further incident support through the State ECC or the DES Duty Officer in Helena. The Duty Officer is available 24 hrs. and may be reached at (406) 841-3911. Media inquiries regarding the history of this event, or for specific information related to the management of this incident, should be directed to the appropriate local jurisdiction or to the DES Public Information Officer [at (406) 841-3911 during regular office hours 8:00 am – 5:00 p.m.].

Montana Department of Military Affairs
Disaster & Emergency Services Division
State Emergency Coordination Center

1100 N. Main - P.O. Box 4789

Helena, MT 59604-4789

Telephone: (406) 841-3911

Fax: (406) 841-3965

Situation Report for June 14, 2000 (issued @ 16:30 hrs.)

North American Rainbow Family Gathering 2000

I. - Background Information

- As the “unofficial” starting date for the **Rainbow Family of Living Light’s 2000 Gathering** rapidly approaches, there now appears to be even more internal controversy over the site selection process. A large contingent of Family members (now estimated at 600 –1000 individuals) seems to be firmly entrenched at the encampment in the Saginaw Creek drainage of the Beaverhead National Forest. Another group, apparently disenchanted with the **Spring Council’s** failure to reach “consensus”, is indicating that they may re-locate to site west of Missoula in the Lolo National Forest.
- Detailed information about the “Rainbow Family of Living Light” and the history of their annual “Family Gatherings” may be found on their “unofficial” Internet website located at:
<http://www.welcomehome.org>
- Information about the history of this incident (from the perspective of the State Emergency Coordination Center) may be found at our “official” website:
<http://www.state.mt.us/dma/des/>
Simply click on the “Situation Reports” button.
- Officials from the U.S. Forest Service and Beaverhead County continue preparations for managing the impacts of the annual gathering, and still anticipate it taking place in Beaverhead County.

II. - Current Conditions

- The number of Rainbow Family Members making their way into the Big Hole Valley continues to escalate. Local merchants and businesses continue reporting sporadic problems. Local medical and health officials also report increases in requests for services.
- The USDA Forest Service has a multi-disciplinary, national Incident Management Team in place. The Team anticipates involving local Beaverhead County officials in a “Unified Command”. The 1st scheduled “Unified Command” meeting is slated for 10:00 am on Friday, June 16, 2000.
- On June 12th, 2000, Beaverhead County Commissioners signed Resolution No. 2000-11 in which they declared a local emergency pursuant to 10-3-(402 or 403) MCA.
- In an effort to support Beaverhead County’s efforts to protect health and safety, and to preserve the lives, property and resources of the people of Montana, Governor Marc Racicot signed an Executive Order declaring an emergency within the State of Montana.
- The State of Montana is prepared to support any requests for assistance from Beaverhead County

authorities through the State Emergency Coordination Center in Helena. (Any involvement by agencies or personnel from the State of Montana will be at the specific request of local authorities.)

- State agencies have been alerted to the possibility of Beaverhead County requesting various forms of assistance (between now and July 10th).

III. - Summary of State Resources Committed

- MT-DES has assigned 2 Agency Representatives to the Dillon area.
- MT-Department of Public Health and Human Services is providing direct support to Beaverhead Co. health and medical officials.
- MT-Department of Justice is assisting local law enforcement authorities through logistical support.
- The State Emergency Coordination Center remains at Level II status. The SECC is staffed during normal business hours, and will issue a Daily Situation Report (for as long as conditions warrant).

State DES will continue to monitor conditions and is prepared to provide further incident support through the State ECC or the DES Duty Officer in Helena. The Duty Officer is available 24 hrs. and may be reached at (406) 841-3911. Media inquiries regarding the history of this event, or for specific information related to the management of this incident, should be directed to the appropriate local jurisdiction or to the DES Public Information Officer [at (406) 841-3911 during regular office hours 8:00 am – 5:00 p.m.].

Montana Department of Military Affairs
Disaster & Emergency Services Division
State Emergency Coordination Center

1100 N. Main - P.O. Box 4789

Helena, MT 59604-4789

Telephone: (406) 841-3911

Fax: (406) 841-3965

Situation Report for June 15, 2000 (issued @ 16:30 hrs.)

North American Rainbow Family Gathering 2000

I. - Background Information

- Judging from some of the recent posts on their Internet newsgroups, it appears that the “**Rainbows**” are frantically attempting to reconcile differences that have surfaced between factions within their “Family” over the selection of a gathering site.
- A steady stream of “Family” members continues to flow into the Big Hole Valley. Local authorities estimate between 600 –1000 individuals have already gathered at the encampment in Saginaw Creek. At this point, it is still anyone’s guess as to whether or not a splinter group may ultimately decide to hold their own gathering at an alternative site (possibly, at a site west of Missoula in the Lolo National Forest).
- Detailed information about the “Rainbow Family of Living Light” and the history of their annual “Family Gatherings” may be found on their “unofficial” Internet website located at:
<http://www.welcomehome.org>
- Information about the history of this incident (from the perspective of the State Emergency Coordination Center) may be found at our “official” website:
<http://www.state.mt.us/dma/des/>
Simply click on the “Situation Reports” button.

II. - Current Conditions

- Aside from the arrival of more and more “Rainbow Family Members” in the area, there have been relatively few developments during the past 24 hours.
- Officials from the U.S. Forest Service and Beaverhead County continue preparations for managing the impacts of the annual gathering, which they still expect to take place in Beaverhead County.
- Residents of Beaverhead County continue to brace for the projected impacts associated with an influx of 25,000 people into this small ranching and farming community. Local merchants and businesses continue reporting sporadic problems. Local medical and health officials also report increases in requests for services.
- The USDA Forest Service has a multi-disciplinary, national Incident Management Team in place. The Team has decided on a location for its Incident Command Post (ICP), and Beaverhead County officials have decided to co-locate with the team in a “Unified Command”. The 1st scheduled “Unified Command” meeting is slated for 10:00 am on Friday, June 16, 2000.
- On June 12th, 2000, Beaverhead County Commissioners signed Resolution No. 2000-11 in which

they declared a local emergency pursuant to 10-3-(402 or 403) MCA.

- In support of Beaverhead County's efforts to protect health and safety, and to preserve the lives, property and resources of the people of Montana, Governor Marc Racicot signed an Executive Order declaring an emergency within the State of Montana.
- The State of Montana remains prepared to support any requests for assistance from Beaverhead County authorities through the State Emergency Coordination Center in Helena. (Any involvement by agencies or personnel from the State of Montana will be at the specific request of local authorities.)
- State agencies have been alerted to the possibility of Beaverhead County requesting various forms of assistance (between now and July 10th).

III. - Summary of State Resources Committed

- MT-DES has assigned 2 Agency Representatives to the Dillon area.
- MT-Department of Public Health and Human Services is providing direct support to Beaverhead Co. health and medical officials.
- MT-Department of Justice is assisting local law enforcement authorities through logistical support.
- The State Emergency Coordination Center continues to operate at Level II status. The SECC is staffed during normal business hours, and will issue a Daily Situation Report (for as long as conditions warrant).

State DES will continue to monitor conditions and is prepared to provide further incident support through the State ECC or the DES Duty Officer in Helena. The Duty Officer is available 24 hrs. and may be reached at (406) 841-3911. Media inquiries regarding the history of this event, or for specific information related to the management of this incident, should be directed to the appropriate local jurisdiction or to the DES Public Information Officer [at (406) 841-3911 during regular office hours 8:00 am – 5:00 p.m.].

Montana Department of Military Affairs
Disaster & Emergency Services Division
State Emergency Coordination Center

1100 N. Main - P.O. Box 4789

Helena, MT 59604-4789

Telephone: (406) 841-3911

Fax: (406) 841-3965

Situation Report for June 19, 2000 (issued @ 16:30 hrs.)

North American Rainbow Family Gathering 2000

I. - Background Information

- A steady stream of "Rainbow Family" members continues to flow into the Big Hole Valley. Local authorities estimate approximately 1000 individuals have already gathered at the encampment in Saginaw Creek. At this point, it seems more and more likely that this will be the sight of the main gathering. (There is a possibility that a splinter group may ultimately hold another gathering at an alternate site.)
- Detailed information about the "Rainbow Family of Living Light" and the history of their annual "Family Gatherings" may be found on the Rainbow's "unofficial" Internet website located at:
<http://www.welcomehome.org>
- Information about the history of this incident (from the perspective of the State Emergency Coordination Center) may be found at our "official" website:
<http://www.state.mt.us/dma/des/>
Simply click on the "Situation Reports" button.
- For the latest public information on the status of the Rainbow Family Gathering from the US Forest Service, please check their web site:
<http://www.fs.fed.us/r1/bdnf/>

II. - Current Conditions

- Aside from the arrival of more and more "Rainbows" in the area, there were few incidents involving "Family Members" in Beaverhead County over the past weekend.
- Officials from the U.S. Forest Service and Beaverhead County continue preparations for managing the impacts of a large gathering in Beaverhead County.
- Forest Service officials still expect an influx of an estimated 25,000 people into this small ranching and farming community by early July. Local merchants and businesses continue reporting sporadic problems. The local welfare office is receiving lots of requests for Food Stamps and other assistance. Local medical and health officials continue experiencing increases in requests for services. The local hospital in particular is reporting handling a number of (relatively) costly cases involving Rainbow Family members.
- The USDA Forest Service has a multi-disciplinary, national Incident Management Team in place. The "Unified Incident Command Team" (which includes representatives from federal, state and local jurisdictions) has established an Incident Command Post (ICP) in Dillon. Coordination and planning meetings are being conducted on a regular basis.

- On June 12th, 2000, Beaverhead County Commissioners signed Resolution No. 2000-11 in which they declared a local emergency pursuant to 10-3-(402 or 403) MCA. In support of Beaverhead County's efforts to protect health and safety, and to preserve the lives, property and resources of the people of Montana, Governor Marc Racicot signed an Executive Order declaring an emergency within the State of Montana.
- The State of Montana remains prepared to support any requests for assistance from Beaverhead County authorities through the State Emergency Coordination Center in Helena. (Any involvement by agencies or personnel from the State of Montana continues to be at the specific request of local authorities.)

*** State Agencies / Employees Please Take Notice!!!**

Unified Incident Command has re-emphasized their request that all state employees visiting Beaverhead County on "official state business" during the Rainbow Family Gathering "check-in" at the Incident Command Post (ICP) prior to conducting your business. 24-hour advance notice would be greatly appreciated. Be sure to bring your "official" state, photo ID. At "check-in", you will be given a health and safety briefing, and will be issued a portable radio for communicating with the ICP. Aside from the fact that it makes good sense from a personal safety and accountability standpoint, it is essential if your agency anticipates billing any of your expenses to this incident.

III. - Summary of State Resources Committed

- MT-DES still has 2 Agency Representatives to the Dillon area.
- MT-Department of Public Health and Human Services is providing direct support to Beaverhead Co. health and medical officials.
- MT-Department of Justice is assisting local law enforcement authorities through logistical support. MHP also reports significant increases in traffic in the area.
- MT-DOT is providing logistics support to state employees assigned to the incident (primarily DPHHS and DES) by supplying a 4x4 vehicle for access to the gathering site. MT-DOT has also been asked to assist with traffic safety by installing additional traffic control signs.
- MT-FWP personnel recently worked the area of the Rainbow Family Gathering enforcing fishing regulations. No violations were observed.
- MT-DEQ conducted a "pre-event" environmental assessment that including surface water sampling. DEQ anticipates no further involvement until after the gathering concludes in July.
- The State Emergency Coordination Center is back to a Level II operating status (i.e., SECC staffed during normal business hours, and producing a Daily Situation Report).

State DES will continue to monitor conditions and is prepared to provide further incident support through the State ECC or the DES Duty Officer in Helena. The Duty Officer is available 24 hrs. and may be reached at (406) 841-3911. Media inquiries regarding the history of this event, or for specific information related to the management of this incident, should be directed to the appropriate local jurisdiction or to the DES Public Information Officer [at (406) 841-3911 during regular office hours 8:00 am – 5:00 p.m.].

**Montana Department of Military Affairs
Disaster & Emergency Services Division
State Emergency Coordination Center
1100 N. Main - P.O. Box 4789
Helena, MT 59604-4789
Telephone: (406) 841-3911 Fax: (406) 841-3965**

Situation Report for June 23, 2000 (issued @ 16:00 hrs.)

North American Rainbow Family Gathering 2000

I. - Background Information

- A steady stream of "Rainbow Family" members continues to flow into Saginaw Creek in the Big Hole Valley.
- Detailed information about the "Rainbow Family of Living Light" and the history of their annual "Family Gatherings" may be found on the Rainbow's "unofficial" Internet website located at:
<http://www.welcomehome.org/>
- Information about the history of this incident (from the perspective of the State Emergency Coordination Center) may be found at our "official" website:
<http://www.state.mt.us/dma/des/>
Simply click on the "Situation Reports" button.
- For the latest public information on the status of the Rainbow Family Gathering from the US Forest Service, please check their web site:
<http://www.fs.fed.us/r1/bdnf/>

II. - Current Conditions *(All new information is shown in bold- italics)*

- Aside from the arrival of more and more "Rainbows" in the area, there were few incidents involving "Family Members" in Beaverhead County over the past weekend. ***Latest count indicates the current Gathering population to be about 5,600 people which is about 1900 more than yesterday. There were approximately 1000 vehicles using the Skinner Meadow Road yesterday.***
- Officials from the U.S. Forest Service and Beaverhead County continue preparations for managing the impacts of a large gathering in Beaverhead County. Fire Safety is a continued concern with local and federal officials because of the present and growing Gathering population in this remote forested area. ***Local and Federal Officials continue to meet with the Rainbows to address this concern. The Incident Management Team is expecting a large number of "non-Rainbows" to visit the site over the upcoming weekend.***
- Forest Service officials still expect an influx of an estimated 25,000 people into this small ranching and farming community by early July. ***The Beaverhead National Forest has closed the Saginaw Mine Road and has installed road gates on all other area closures.***
- Due to the traffic load and citizen complaints, the Beaverhead County Commissioners imposed a 35 mile per hour speed limit on the Skinner Meadow Road between Highway 278 and the Forest Service boundary. County officials also installed a stop sign at the intersection of Highway 278 and Skinner Meadow Road. Local officials have safety concerns with the highway construction project underway on Highway 278 between Dillon and Skinner Meadow Road intersection. Local and State officials are also concerned with the growing pedestrian, bicycle and slow moving vehicle traffic on Highway 278 for the 60 miles between Dillon and Skinner Meadow Road intersection.

- The USDA Forest Service has a multi-disciplinary, national Incident Management Team in place. The “Unified Incident Command Team” (which includes representatives from federal, state and local jurisdictions) has established an Incident Command Post (ICP) in Dillon. Coordination and planning meetings are being conducted on a regular basis. The Beaverhead County Sheriff has established an incident dispatch center to handle local emergency calls related specifically to this incident.
- *Local officials have made arrangements to deliver a 45 yard trash container to the site along with recycle containers.*
- On June 12th, 2000, Beaverhead County Commissioners signed Resolution No. 2000-11 in which they declared a local emergency pursuant to 10-3-402 MCA. In support of Beaverhead County’s efforts to protect health and safety, and to preserve the lives, property and resources of the people of Montana, Governor Marc Racicot signed an Executive Order declaring an emergency within the State of Montana.
- *On June 22nd, 2000, Beaverhead County Commissioners signed Resolution No. 2000-16 in which they declared a local disaster pursuant to 10-3-403 MCA and have formally requested financial assistance from the State of Montana.*
- The State of Montana remains prepared to support any requests for assistance from Beaverhead County authorities through the State Emergency Coordination Center in Helena. (Any involvement by agencies or personnel from the State of Montana continues to be at the specific request of local authorities.)

III. - Summary of State Resources Committed

- MT-DES has 1 Technical Specialist and 1 Agency Representative at the Dillon Incident Command Post area.
- MT-Department of Public Health and Human Services is providing direct support to Beaverhead Co. health and medical officials.
- MT-Department of Justice is assisting local law enforcement authorities through logistical support. MHP also reports significant increases in traffic in the area.
- MT-DOT is providing logistics support to state employees assigned to the incident (primarily DPHHS and DES) by supplying a 4x4 vehicle for access to the gathering site.
- The State Emergency Coordination Center is back to a Level II operating status (i.e., SECC staffed during normal business hours, and producing a Daily Situation Report).

State DES will continue to monitor conditions and is prepared to provide further incident support through the State ECC or the DES Duty Officer in Helena. The Duty Officer is available 24 hrs. and may be reached at (406) 841-3911. Media inquiries regarding the history of this event, or for specific information related to the management of this incident, should be directed to the appropriate local jurisdiction or to the DES Public Information Officer [at (406) 841-3911 during regular office hours 8:00 am – 5:00 p.m.].

**Montana Department of Military Affairs
Disaster & Emergency Services Division
State Emergency Coordination Center**

1100 N. Main - P.O. Box 4789

Helena, MT 59604-4789

Telephone: (406) 841-3911

Fax: (406) 841-3965

Situation Report for June 26, 2000 (issued @ 16:30 hrs.)

North American Rainbow Family Gathering 2000

I. - Background Information

- A steady stream of "Rainbow Family" members continues to flow into Saginaw Creek in the Big Hole Valley.
- Detailed information about the "Rainbow Family of Living Light" and the history of their annual "Family Gatherings" may be found on the Rainbow's "unofficial" Internet website located at:
<http://www.welcomehome.org/>
- Information about the history of this incident (from the perspective of the State Emergency Coordination Center) may be found at our "official" website:
<http://www.state.mt.us/dma/des/>
Simply click on the "Situation Reports" button.

- For the latest public information on the status of the Rainbow Family Gathering from the US Forest Service, please check their web site:
<http://www.fs.fed.us/r1/bdnf/>

II. - Current Conditions *(All new information is shown in bold- italics)*

- Aside from the arrival of more and more "Rainbows" in the area, there were few incidents involving "Family Members" in Beaverhead County over the past weekend. ***Latest count indicates the current Gathering population to be more than 9,000 people. Local officials have seen a dramatic increase in law enforcement related activity as well as medical contacts from the Rainbow followers.***
- Officials from the U.S. Forest Service and Beaverhead County continue preparations for managing the impacts of a large gathering in Beaverhead County. Fire Safety is a continued concern with local and federal officials because of the present and growing Gathering population in this remote forested area. Local and Federal Officials continue to meet with the Rainbows to address this concern.
- Forest Service officials still expect an influx of an estimated 25,000 people into this small ranching and farming community by early July. The Beaverhead National Forest has closed the Saginaw Mine Road and has installed road gates on all other area closures. ***Parking has become a major problem in the Gathering area. This creates an additional challenge to emergency responders attempting to enter the area.***
- Due to the traffic load and citizen complaints, the Beaverhead County Commissioners imposed a 35 mile per hour speed limit on the Skinner Meadow Road between Highway 278 and the Forest Service boundary. County officials also installed a stop sign at the intersection of Highway 278 and Skinner Meadow Road. Local officials have safety concerns with the highway construction project underway on Highway 278 between Dillon and Skinner Meadow Road intersection. Local and State officials are also concerned with the growing pedestrian, bicycle and slow moving vehicle traffic on Highway 278 for the 60 miles between Dillon and Skinner Meadow Road intersection.

- The USDA Forest Service has a multi-disciplinary, national Incident Management Team in place. The “Unified Incident Command Team” (which includes representatives from federal, state and local jurisdictions) has established an Incident Command Post (ICP) in Dillon. Coordination and planning meetings are being conducted on a regular basis. The Beaverhead County Sheriff has established an incident dispatch center to handle local emergency calls related specifically to this incident.
- Local officials have made arrangements to deliver a 45 yard trash container to the site along with recycle containers.
- On June 12th, 2000, Beaverhead County Commissioners signed Resolution No. 2000-11 in which they declared a local emergency pursuant to 10-3-402 MCA. In support of Beaverhead County’s efforts to protect health and safety, and to preserve the lives, property and resources of the people of Montana, Governor Marc Racicot signed an Executive Order declaring an emergency within the State of Montana.
- On June 22nd, 2000, Beaverhead County Commissioners signed Resolution No. 2000-16 in which they declared a local disaster pursuant to 10-3-403 MCA and have formally requested financial assistance from the State of Montana.
- The State of Montana remains prepared to support any requests for assistance from Beaverhead County authorities through the State Emergency Coordination Center in Helena. (Any involvement by agencies or personnel from the State of Montana continues to be at the specific request of local authorities.)

III. - Summary of State Resources Committed

- MT-DES has 1 Technical Specialist and 1 Agency Representative at the Dillon Incident Command Post area.
- MT-Department of Public Health and Human Services is providing direct support to Beaverhead Co. health and medical officials.
- MT-Department of Justice is assisting local law enforcement authorities through logistical support. MHP also reports significant increases in traffic in the area.
- MT-DOT is providing logistics support to state employees assigned to the incident (primarily DPHHS and DES) by supplying a 4x4 vehicle for access to the gathering site.
- The State Emergency Coordination Center is back to a Level II operating status (i.e., SECC staffed during normal business hours, and producing a Daily Situation Report).

State DES will continue to monitor conditions and is prepared to provide further incident support through the State ECC or the DES Duty Officer in Helena. The Duty Officer is available 24 hrs. and may be reached at (406) 841-3911. Media inquiries regarding the history of this event, or for specific information related to the management of this incident, should be directed to the appropriate local jurisdiction or to the DES Public Information Officer [at (406) 841-3911 during regular office hours 8:00 am – 5:00 p.m.].

**Montana Department of Military Affairs
Disaster & Emergency Services Division
State Emergency Coordination Center**

1100 N. Main - P.O. Box 4789

Helena, MT 59604-4789

Telephone: (406) 841-3911

Fax: (406) 841-3965

Situation Report for June 28, 2000 (issued @ 16:30 hrs.)

North American Rainbow Family Gathering 2000

I. - Background Information

- A steady stream of "Rainbow Family" members continues to flow into Saginaw Creek in the Big Hole Valley.
- Detailed information about the "Rainbow Family of Living Light" and the history of their annual "Family Gatherings" may be found on the Rainbow's "unofficial" Internet website located at:
<http://www.welcomehome.org/>
- Information about the history of this incident (from the perspective of the State Emergency Coordination Center) may be found at our "official" website:
<http://www.state.mt.us/dma/des/>
Simply click on the "Situation Reports" button.
- For the latest public information on the status of the Rainbow Family Gathering from the US Forest Service, please check their web site:
<http://www.fs.fed.us/r1/bdnf/>
- On June 12th, 2000, Beaverhead County Commissioners signed Resolution No. 2000-11 in which they declared a local emergency pursuant to 10-3-402 MCA. In support of Beaverhead County's efforts to protect health and safety, and to preserve the lives, property and resources of the people of Montana, Governor Marc Racicot signed an Executive Order declaring an emergency within the State of Montana.
- The USDA Forest Service has a multi-disciplinary, national Incident Management Team in place. The "Unified Incident Command Team" (which includes representatives from federal, state and local jurisdictions) has established an Incident Command Post (ICP) in Dillon. Coordination and planning meetings are being conducted on a regular basis. The Beaverhead County Sheriff has established an incident dispatch center to handle local emergency calls related specifically to this incident.
- On June 22nd, 2000, Beaverhead County Commissioners signed Resolution No. 2000-16 in which they declared a local disaster pursuant to 10-3-403 MCA and have formally requested financial assistance from the State of Montana.

II. - Current Conditions *(All new information is shown in bold- italics)*

- Aside from the arrival of more and more "Rainbows" in the area, there were few incidents involving "Family Members" in Beaverhead County over the past weekend. ***Latest count indicates the current Gathering population to be more than 10,800 people and over 1200 vehicles.*** Local officials have seen a dramatic increase in law enforcement related activity as well as medical contacts from the Rainbow followers. ***The National Park Service has increased their presence at the Big Hole Battlefield National Monument near Wisdom.***
- Officials from the U.S. Forest Service and Beaverhead County continue preparations for managing the impacts of a large gathering in Beaverhead County. Fire Safety is a continued concern with local and federal officials because of the present and growing Gathering population in this remote forested area. ***Local and Federal Officials have drafted and agreed upon a fire plan for the Gathering site. The U.S. Forest Service has issued a press release on fireworks ban on Forest Service Land.***

- *Potable water is becoming very scarce at the Gathering Site. Some of the previously used springs are now dry.*
- Forest Service officials still expect an influx of an estimated 25,000 people into this small ranching and farming community by early July. The Beaverhead National Forest has closed the Saginaw Mine Road and has installed road gates on all other area closures. ***Parking continues to be a major problem in the Gathering area.*** This creates an additional challenge to emergency responders attempting to enter the area. ***Landowners adjacent to the Gathering are not authorizing Rainbow parking on their properties as rumored within the encampment.***
- Due to the traffic load and citizen complaints, the Beaverhead County Commissioners imposed a 35 mile per hour speed limit on the Skinner Meadow Road between Highway 278 and the Forest Service boundary. County officials also installed a stop sign at the intersection of Highway 278 and Skinner Meadow Road. Local officials have safety concerns with the highway construction project underway on Highway 278 between Dillon and Skinner Meadow Road intersection. Local and State officials are also concerned with the growing pedestrian, bicycle and slow moving vehicle traffic on Highway 278 for the 60 miles between Dillon and Skinner Meadow Road intersection. ***State and County crews have been repairing potholes and other maintenance on sections of Highway 278. There are no plans for repair and maintenance of the Skinner Meadow Road.***
- The State of Montana remains prepared to support any requests for assistance from Beaverhead County authorities through the State Emergency Coordination Center in Helena. (Any involvement by agencies or personnel from the State of Montana continues to be at the specific request of local authorities.)

III. - Summary of State Resources Committed

- MT-DES has 1 Technical Specialist and 1 Agency Representative at the Dillon Incident Command Post area.
- MT-Department of Public Health and Human Services is providing direct support to Beaverhead Co. health and medical officials.
- MT-Department of Justice is assisting local law enforcement authorities through logistical support. MHP also reports significant increases in traffic in the area.
- MT-DOT is providing logistics support to state employees assigned to the incident (primarily DPHHS and DES) by supplying a 4x4 vehicle for access to the gathering site.
- The State Emergency Coordination Center is back to a Level II operating status (i.e., SECC staffed during normal business hours, and producing a Daily Situation Report).

State DES will continue to monitor conditions and is prepared to provide further incident support through the State ECC or the DES Duty Officer in Helena. The Duty Officer is available 24 hrs. and may be reached at (406) 841-3911. Media inquiries regarding the history of this event, or for specific information related to the management of this incident, should be directed to the appropriate local jurisdiction or to the DES Public Information Officer [at (406) 841-3911 during regular office hours 8:00 am – 5:00 p.m.].

**Montana Department of Military Affairs
Disaster & Emergency Services Division
State Emergency Coordination Center**

1100 N. Main - P.O. Box 4789

Helena, MT 59604-4789

Telephone: (406) 841-3911

Fax: (406) 841-3965

Situation Report for June 29, 2000 (issued @ 16:30 hrs.)

North American Rainbow Family Gathering 2000

I. - Background Information

- A steady stream of "Rainbow Family" members continues to flow into Saginaw Creek in the Big Hole Valley.
- Detailed information about the "Rainbow Family of Living Light" and the history of their annual "Family Gatherings" may be found on the Rainbow's "unofficial" Internet website located at:
<http://www.welcomehome.org/>
- Information about the history of this incident (from the perspective of the State Emergency Coordination Center) may be found at our "official" website:
<http://www.state.mt.us/dma/des/>
Simply click on the "Situation Reports" button.
- For the latest public information on the status of the Rainbow Family Gathering from the US Forest Service, please check their web site:
<http://www.fs.fed.us/r1/bdnf/>
- On June 12th, 2000, Beaverhead County Commissioners signed Resolution No. 2000-11 in which they declared a local emergency pursuant to 10-3-402 MCA. In support of Beaverhead County's efforts to protect health and safety, and to preserve the lives, property and resources of the people of Montana, Governor Marc Racicot signed an Executive Order declaring an emergency within the State of Montana.
- The USDA Forest Service has a multi-disciplinary, national Incident Management Team in place. The "Unified Incident Command Team" (which includes representatives from federal, state and local jurisdictions) has established an Incident Command Post (ICP) in Dillon. Coordination and planning meetings are being conducted on a regular basis. The Beaverhead County Sheriff has established an incident dispatch center to handle local emergency calls related specifically to this incident.
- On June 22nd, 2000, Beaverhead County Commissioners signed Resolution No. 2000-16 in which they declared a local disaster pursuant to 10-3-403 MCA and have formally requested financial assistance from the State of Montana.

II. - Current Conditions *(All new information is shown in bold- italics)*

- Aside from the arrival of more and more "Rainbows" in the area, there were few incidents involving "Family Members" in Beaverhead County over the past weekend. ***Latest count indicates the current Gathering population to be more than 13,000 people.*** Local officials continue to see a daily increase in law enforcement related activity as well as medical contacts from the Rainbow followers. ***The Dillon Humane Society is currently experiencing large numbers of Rainbow related pets at their shelter. Local residents, curious about the Rainbow Gathering, are being advised to travel to the Gathering at their own risk.***
- Officials from the U.S. Forest Service and Beaverhead County continue preparations for managing the impacts of a large gathering in Beaverhead County. Fire Safety is a continued concern with local and federal officials because of the present and growing Gathering population in this remote forested area. Local and Federal Officials have drafted and agreed upon a fire plan for the Gathering site. The U.S. Forest Service has issued a press release on fireworks ban on Forest Service Land.

- *Potable water is becoming very scarce at the Gathering Site. Some of the previously used springs are now dry. The well in the nearby South Van Houten Campground has been repaired (pump handle), tested and usage is encouraged for a potable water source.*
- Forest Service officials still expect an influx of an estimated 25,000 people into this small ranching and farming community by early July. The Beaverhead National Forest has closed the Saginaw Mine Road and has installed road gates on all other area closures. The National Park Service has increased their presence at the Big Hole Battlefield National Monument near Wisdom. Parking continues to be a major problem in the Gathering area. This creates an additional challenge to emergency responders attempting to enter the area. Landowners adjacent to the Gathering are not authorizing Rainbow parking on their properties as rumored within the encampment.
- Due to the traffic load and citizen complaints, the Beaverhead County Commissioners imposed a 35-mile per hour speed limit on the Skinner Meadow Road between Highway 278 and the Forest Service boundary. County officials also installed a stop sign at the intersection of Highway 278 and Skinner Meadow Road. Local officials have safety concerns with the highway construction project underway on Highway 278 between Dillon and Skinner Meadow Road intersection. Local and State officials are also concerned with the growing pedestrian, bicycle and slow moving vehicle traffic on Highway 278 for the 60 miles between Dillon and Skinner Meadow Road intersection. *State and County crews have been repairing potholes and other maintenance on sections of Highway 278. There are no plans for repair and maintenance of the Skinner Meadow Road.*
- The State of Montana remains prepared to support any requests for assistance from Beaverhead County authorities through the State Emergency Coordination Center in Helena. (Any involvement by agencies or personnel from the State of Montana continues to be at the specific request of local authorities.)

III. - Summary of State Resources Committed

- MT-DES has 1 Technical Specialist and 1 Agency Representative at the Dillon Incident Command Post area.
- MT-Department of Public Health and Human Services is providing direct support to Beaverhead Co. health and medical officials.
- MT-Department of Justice is assisting local law enforcement authorities through logistical support. MHP also reports significant increases in traffic in the area.
- MT-DOT is providing logistics support to state employees assigned to the incident (primarily DPHHS and DES) by supplying a 4x4 vehicle for access to the gathering site.
- The State Emergency Coordination Center is back to a Level II operating status (i.e., SECC staffed during normal business hours, and producing a Daily Situation Report).

State DES will continue to monitor conditions and is prepared to provide further incident support through the State ECC or the DES Duty Officer in Helena. The Duty Officer is available 24 hrs. and may be reached at (406) 841-3911. Media inquiries regarding the history of this event, or for specific information related to the management of this incident, should be directed to the appropriate local jurisdiction or to the DES Public Information Officer [at (406) 841-3911 during regular office hours 8:00 am – 5:00 p.m.].

**Montana Department of Military Affairs
Disaster & Emergency Services Division
State Emergency Coordination Center**

1100 N. Main - P.O. Box 4789

Helena, MT 59604-4789

Telephone: (406) 841-3911

Fax: (406) 841-3965

Situation Report for June 30, 2000 (issued @ 14:30 hrs.)

North American Rainbow Family Gathering 2000

I. - Background Information

- A steady stream of "Rainbow Family" members continues to flow into Saginaw Creek in the Big Hole Valley.
- Detailed information about the "Rainbow Family of Living Light" and the history of their annual "Family Gatherings" may be found on the Rainbow's "unofficial" Internet website located at:
<http://www.welcomehome.org/>
- Information about the history of this incident (from the perspective of the State Emergency Coordination Center) may be found at our "official" website:
<http://www.state.mt.us/dma/des/>
Simply click on the "Situation Reports" button.
- For the latest public information on the status of the Rainbow Family Gathering from the US Forest Service, please check their web site:
<http://www.fs.fed.us/r1/bdnf/>
- On June 12th, 2000, Beaverhead County Commissioners signed Resolution No. 2000-11 in which they declared a local emergency pursuant to 10-3-402 MCA. In support of Beaverhead County's efforts to protect health and safety, and to preserve the lives, property and resources of the people of Montana, Governor Marc Racicot signed an Executive Order declaring an emergency within the State of Montana.
- The USDA Forest Service has a multi-disciplinary, national Incident Management Team in place. The "Unified Incident Command Team" (which includes representatives from federal, state and local jurisdictions) has established an Incident Command Post (ICP) in Dillon. Coordination and planning meetings are being conducted on a regular basis. The Beaverhead County Sheriff has established an incident dispatch center to handle local emergency calls related specifically to this incident.
- On June 22nd, 2000, Beaverhead County Commissioners signed Resolution No. 2000-16 in which they declared a local disaster pursuant to 10-3-403 MCA and have formally requested financial assistance from the State of Montana.

II. - Current Conditions *(All new information is shown in bold- italics)*

- ***Latest count indicates the current Gathering population to be more than 15,000 people.*** Local officials continue to see a daily increase in law enforcement related activity as well as medical contacts from the Rainbow followers. The Dillon Humane Society is currently experiencing large numbers of Rainbow related pets at their shelter. ***Do to safety reasons, the Incident Command Staff are restricting site visits of staff to the Gathering Site to essential service personnel only. Local residents, curious about the Rainbow Gathering, are being advised to travel to the Gathering at their own risk.***
- ***On June 29, 2000, Montana Department of Transportation manufactured and installed 2 large caution signs warning of pedestrian, bicycle and slow moving vehicles on Highway 278 between Wisdom and Dillon.***
- Officials from the U.S. Forest Service and Beaverhead County continue preparations for managing the impacts

of a large gathering in Beaverhead County. Fire Safety is a continued concern with local and federal officials because of the present and growing Gathering population in this remote forested area. Local and Federal Officials have drafted and agreed upon a fire plan for the Gathering site. The U.S. Forest Service has issued a press release on fireworks ban on Forest Service Land.

- ***Potable water continues to be very scarce at the Gathering Site. Some of the previously used springs are now dry. The well in the nearby South Van Houten Campground has been repaired (pump handle), tested and usage is encouraged for a potable water source.***
- Forest Service officials still expect an influx of an estimated 25,000 people into this small ranching and farming community by early July. The Beaverhead National Forest has closed the Saginaw Mine Road and has installed road gates on all other area closures. The National Park Service has increased their presence at the Big Hole Battlefield National Monument near Wisdom. Parking continues to be a major problem in the Gathering area. This creates an additional challenge to emergency responders attempting to enter the area. Landowners adjacent to the Gathering are not authorizing Rainbow parking on their properties as rumored within the encampment.
- Due to the traffic load and citizen complaints, the Beaverhead County Commissioners imposed a 35-mile per hour speed limit on the Skinner Meadow Road between Highway 278 and the Forest Service boundary. ***Beaverhead County hired a local contractor to haul and spray water onto the Skinner Meadow Road for dust control due to the heavy traffic.***
- The State of Montana remains prepared to support any requests for assistance from Beaverhead County authorities through the State Emergency Coordination Center in Helena. (Any involvement by agencies or personnel from the State of Montana continues to be at the specific request of local authorities.)

III. - Summary of State Resources Committed

- MT-DES has 1 Technical Specialist and 1 Agency Representative at the Dillon Incident Command Post area.
- MT-Department of Public Health and Human Services is providing direct support to Beaverhead Co. health and medical officials.
- MT-Department of Justice is assisting local law enforcement authorities through logistical support. MHP also reports significant increases in traffic in the area.
- MT-DOT is providing logistics support to state employees assigned to the incident (primarily DPHHS and DES) by supplying a 4x4 vehicle for access to the gathering site as well as highway traffic caution signs for Highway 278.
- The State Emergency Coordination Center will drop to a Level I operating status (i.e., Duty Officer) through the weekend of July 1 and 2. There will be no weekend situation reports unless significant events/incidents occur. The SECC will resume Level II status, Monday July 3, 2000 with the dissemination of daily situation reports.

State DES will continue to monitor conditions and is prepared to provide further incident support through the State ECC or the DES Duty Officer in Helena. The Duty Officer is available 24 hrs. and may be reached at (406) 841-3911.

Media inquiries regarding the history of this event, or for specific information related to the management of this incident, should be directed to the appropriate local jurisdiction or to the DES Public Information Officer [at (406) 841-3911 during regular office hours 8:00 am – 5:00 p.m.].

**Montana Department of Military Affairs
Disaster & Emergency Services Division
State Emergency Coordination Center**

1100 N. Main - P.O. Box 4789

Helena, MT 59604-4789

Telephone: (406) 841-3911

Fax: (406) 841-3965

Situation Report for July 03, 2000 (issued @ 16:30 hrs.)

North American Rainbow Family Gathering 2000

I. - Background Information

- A steady stream of "Rainbow Family" members continues to flow into Saginaw Creek in the Big Hole Valley.
- Detailed information about the "Rainbow Family of Living Light" and the history of their annual "Family Gatherings" may be found on the Rainbow's "unofficial" Internet website located at:
<http://www.welcomehome.org/>
- Information about the history of this incident (from the perspective of the State Emergency Coordination Center) may be found at our "official" website:
<http://www.state.mt.us/dma/des/>
Simply click on the "Situation Reports" button.
- For the latest public information on the status of the Rainbow Family Gathering from the US Forest Service, please check their web site:
<http://www.fs.fed.us/r1/bdnf/>
- On June 12th, 2000, Beaverhead County Commissioners signed Resolution No. 2000-11 in which they declared a local emergency pursuant to 10-3-402 MCA. In support of Beaverhead County's efforts to protect health and safety, and to preserve the lives, property and resources of the people of Montana, Governor Marc Racicot signed an Executive Order declaring an emergency within the State of Montana.
- The USDA Forest Service has a multi-disciplinary, national Incident Management Team in place. The "Unified Incident Command Team" (which includes representatives from federal, state and local jurisdictions) has established an Incident Command Post (ICP) in Dillon. Coordination and planning meetings are being conducted on a regular basis. The Beaverhead County Sheriff has established an incident dispatch center to handle local emergency calls related specifically to this incident.
- On June 22nd, 2000, Beaverhead County Commissioners signed Resolution No. 2000-16 in which they declared a local disaster pursuant to 10-3-403 MCA and have formally requested financial assistance from the State of Montana.

II. - Current Conditions *(All new information is shown in bold- italics)*

- ***Latest count indicates the current Gathering population to be more than 23,000 people.*** Local officials continue to see a daily increase in law enforcement related activity as well as medical contacts from the Rainbow followers. ***Barrett Memorial Hospital in Dillon has reported seeing an average of 5 Rainbow attendees per day. They have had 42 related admissions to date, the majority uninsured. The Dillon Humane Society continues to experience large numbers of Rainbow related pets at their shelter.***
- Officials from the U.S. Forest Service and Beaverhead County continue preparations for managing the impacts of a large gathering in Beaverhead County. Fire Safety is a continued concern with local and federal officials because of the present and growing Gathering population in this remote forested area.
- Forest Service officials still expect an influx of an estimated 25,000 people into this small ranching and farming community by early July. The Beaverhead National Forest has closed the Saginaw Mine Road and

has installed road gates on all other area closures. The National Park Service has increased their presence at the Big Hole Battlefield National Monument near Wisdom. Parking continues to be a major problem in the Gathering area. *Current parking is being utilized at the Van Houten Camping area. The Incident Command Post reports 17 vehicles have been towed from the Gathering site for parking infractions.*

- Due to the traffic load and citizen complaints, the Beaverhead County Commissioners imposed a 35-mile per hour speed limit on the Skinner Meadow Road between Highway 278 and the Forest Service boundary.
- The State of Montana remains prepared to support any requests for assistance from Beaverhead County authorities through the State Emergency Coordination Center in Helena. (Any involvement by agencies or personnel from the State of Montana continues to be at the specific request of local authorities.)

III. - Summary of State Resources Committed

- MT-DES has 1 Technical Specialist and 1 Agency Representative at the Dillon Incident Command Post area.
- MT-Department of Public Health and Human Services is providing direct support to Beaverhead Co. health and medical officials.
- MT-Department of Justice is assisting local law enforcement authorities through logistical support. MHP also reports significant increases in traffic in the area.
- MT-DOT is providing logistics support to state employees assigned to the incident (primarily DPHHS and DES) by supplying a 4x4 vehicle for access to the gathering site as well as highway traffic caution signs for Highway 278.
- The State Emergency Coordination Center will drop to a Level I operating status (i.e., Duty Officer) through the weekend of July 1 and 2. There will be no weekend situation reports unless significant events/incidents occur. The SECC will resume Level II status, Monday July 3, 2000 with the dissemination of daily situation reports.

State DES will continue to monitor conditions and is prepared to provide further incident support through the State ECC or the DES Duty Officer in Helena. The Duty Officer is available 24 hrs. and may be reached at (406) 841-3911.

Media inquiries regarding the history of this event, or for specific information related to the management of this incident, should be directed to the appropriate local jurisdiction or to the DES Public Information Officer [at (406) 841-3911 during regular office hours 8:00 am – 5:00 p.m.].

**Montana Department of Military Affairs
Disaster & Emergency Services Division
State Emergency Coordination Center**

1100 N. Main - P.O. Box 4789

Helena, MT 59604-4789

Telephone: (406) 841-3911

Fax: (406) 841-3965

Situation Report for July 04, 2000 (issued @ 17:30 hrs.)

North American Rainbow Family Gathering 2000

I. - Background Information

- A steady stream of "Rainbow Family" members continues to flow into Saginaw Creek in the Big Hole Valley.
- Detailed information about the "Rainbow Family of Living Light" and the history of their annual "Family Gatherings" may be found on the Rainbow's "unofficial" Internet website located at:
<http://www.welcomehome.org/>
- Information about the history of this incident (from the perspective of the State Emergency Coordination Center) may be found at our "official" website:
<http://www.state.mt.us/dma/des/>
Simply click on the "Situation Reports" button.
- For the latest public information on the status of the Rainbow Family Gathering from the US Forest Service, please check their web site:
<http://www.fs.fed.us/r1/bdnf/>
- On June 12th, 2000, Beaverhead County Commissioners signed Resolution No. 2000-11 in which they declared a local emergency pursuant to 10-3-402 MCA. In support of Beaverhead County's efforts to protect health and safety, and to preserve the lives, property and resources of the people of Montana, Governor Marc Racicot signed an Executive Order declaring an emergency within the State of Montana.
- The USDA Forest Service has a multi-disciplinary, national Incident Management Team in place. The "Unified Incident Command Team" (which includes representatives from federal, state and local jurisdictions) has established an Incident Command Post (ICP) in Dillon. Coordination and planning meetings are being conducted on a regular basis. The Beaverhead County Sheriff has established an incident dispatch center to handle local emergency calls related specifically to this incident.
- On June 22nd, 2000, Beaverhead County Commissioners signed Resolution No. 2000-16 in which they declared a local disaster pursuant to 10-3-403 MCA and have formally requested financial assistance from the State of Montana.

II. - Current Conditions *(All new information is shown in bold- italics)*

- ***Latest count indicates the PEAK Gathering population to be close to 23,000 people.*** Local officials continue to see a daily increase in law enforcement related activity as well as medical contacts from the Rainbow followers. ***Incident Command Officials expect a mass exodus from the Gathering site starting today (July 4) and continuing for several days. There are safety concerns with the construction ongoing construction project on Highway 278.***
- Officials from the U.S. Forest Service and Beaverhead County continue preparations for managing the impacts of a large gathering in Beaverhead County. Fire Safety is a continued concern with local and federal officials because of the present and growing Gathering population in this remote forested area.

Infectious Disease Concerns....

- Bloodborne pathogens
- Enteric bacteria
- Parasites
- Waterborne diseases
- Foodborne diseases
- Airborne diseases
- Rabies

Bloodborne pathogens....

- **AIDS**
- **Hepatitis B**
- **Hepatitis C**

Do's & Don't's...

- Do....
 - Shield your eyes
 - Cover cuts, scrapes & open wounds
 - Avoid needles...watch your hands
 - Get vaccinated against Hepatitis B
 - Glove-up in presence of body fluids
 - Use universal precautions
 - Get to hospital quickly after an exposure

Enteric bacteria.....

- Salmonella
- Shigella
- Toxigenic E. coli
- Yersinia enterocolitica
- Campylobacter

Enteric precautions....Do's & Don't's

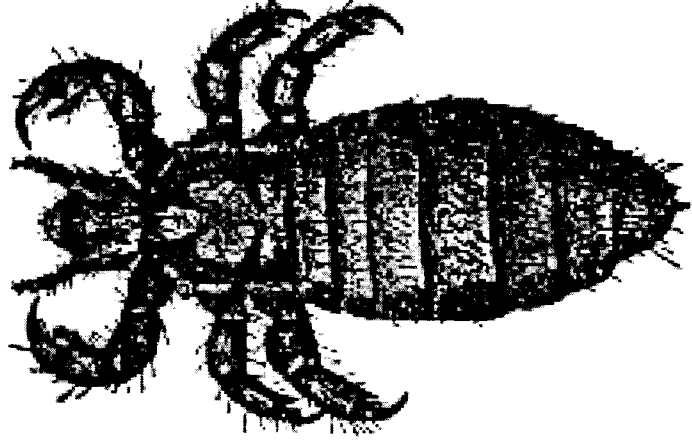
- Don't...
 - Bite fingernails
 - Lick fingers
 - Chew on pens/pencils
 - Switch ends of toothpick
 -**until after washing your hands**

Enteric precautions....Do's & Don't's

- Do...
 - Keep a supply of wet-wipes in patrol unit
 - Use hand sanitizer solution
 - Pack-in your own food & water
 - Wash hands upon return to ICP
 - Wipe-down inside of patrol car after transporting subjects

Ectoparasites.....

- Lice
- Scabies
- Ticks



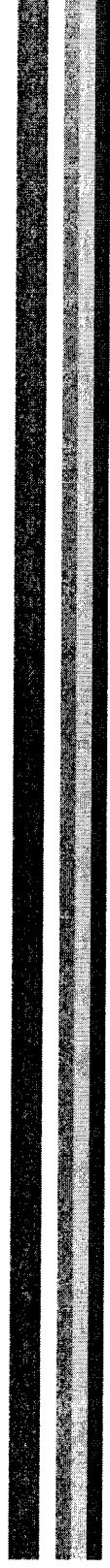
Ectoparasites.....Do's & Don't's

- Minimize contact with subject hair and headgear
- Avoid skin-skin contact with subjects
- Promptly treat infestations using appropriate medicated shampoo

Waterborne Diseases....

- Giardia
- Cryptosporidiosis
- Gastroenteritis viruses

Foodborne Diseases....



Airborne disease.....tuberculosis



Tuberculosis.....Do's & Don't's

- Do maintain added airspace from subjects
- Don't get "in their face"
- Do place masks on "coughers" in custody
- Do open vents in units during transports
- Do get a TB skin test in 3-6 months

Rabies....



Got your shots?.....

- Hepatitis B
- Tetanus
- Influenza
- Hepatitis A
- Pneumonia

2000 RAINBOW GATHERING
PERSONAL SAFETY ITEMS FOR RESOURCE PERSONNEL

CHECK IN @ ICP (Dillon Middle School):

OBTAIN incident radio or clone.
communications information and briefing.
safety briefing and updates.
Incident Action Plan and map

STANDARDS AND SITE CONDUCT:

Work in pairs.
Communicate with dispatch and LE shift commander. Check in and out.
Bring own food and water. Do not accept on site.
Use antiseptic hand wash or gloves.
Wear appropriate footwear. No sandals or open toed shoes.
Have insect repellent and sunscreen.
Recommend wearing long sleeved shirt or jacket.
No shorts.
Be in uniform or otherwise identifiable (name tags).
Stay aware of your surroundings – recognize dangerous situations.
Make sure someone knows where you are and when you will return.
Use common sense.
Be friendly but professional.
Know where you will go if a problem develops.
Don't take photographs of participants without asking permission.
Do not take law enforcement action or role.
Drive defensively at reasonable speed and use headlights.
Don't discuss or speculate on subjects not in your field of expertise.
Lock vehicles and take keys.

Prepared by _____

Reviewed by _____

Approved by _____

**TYPE AND FREQUENCY OF VISITS TO MEDICAL FACILITIES BY RAINBOW
FAMILY GATHERING ATTENDEES, BEAVERHEAD CO., 6/4/00-7/5/00**

N	Nature of complaint	
<hr/>		
Abdominal pain		3
Dental		5
Infections		12
- otitis media		1
- localized, superficial skin		1
- pharyngeal		5
- cellulitis		3
- pulmonary		2
Motor vehicle accident injuries		4
Musculo-skeletal		3
Natal		5
Psychiatric		1
Substance abuse		3
Surface wounds		7
Miscellaneous		8
- Epileptic seizure		1
- Venous thrombosis		1
- Diabetic ketoacidosis		1
- Outpatient medicine refills		2
- Lymphadenopathy		1
- Chemical exposure to eyes		1
- Sickle cell exacerbation		1
<hr/>		
Total		51



LARRY LAKNAR
BEAVERHEAD COUNTY DISASTER & EMERGENCY
SERVICES

BEAVERHEAD COUNTY EMERGENCY OPERATIONS CENTER
1000 HIGHWAY 41
DILLON, MT 59725

406-683-6667

Situation Report for June 13, 2000 (issued @ 20:00 hrs.)

North American Rainbow Family Gathering 2000

I. - Background Information

- The **Rainbow Family** is a loosely knit group of 1960's style "hippies", "anti-war, Viet Nam veterans", "peace activists", and other individuals who claim to have no direct leadership or organization. Beginning in 1972 and continuing through 1999, the "North American Rainbow Family of Living Light" has gathered each year on National Forest lands where they "come together to pray for world peace and the healing of Mother Earth". Historically these gatherings have attracted as many as 25,000 people and lasted several weeks. Peak participation is normally July 1st through the 7th. Following their 1999 gathering on the Allegheny National Forest in Pennsylvania, the Rainbow Family announced that its 2000 gathering would take place somewhere in "western Montana or Idaho".
- Since early this year, the **USDA Forest Service** and the **Montana Department of Justice** have been collecting information about the upcoming gathering and trying to help prepare local civil authorities throughout western and south-central Montana for the potential impacts should the gathering occur near their communities.
- After it became apparent that the 2000 Family Gathering would most likely take place within Beaverhead County, representatives from the USFS Region One, MT-DOJ, and MT-DES met on June 6th with elected officials from Beaverhead County, the City of Dillon, the Bureau of Land Management, and the Beaverhead National Forest to discuss local preparations for that event.
- On June 10th, the Rainbow's officially convened "**Spring Council**" near Jackson, MT. Spring Council is a meeting at which they formally establish the site of the annual gathering. ("Spring Council" has traditionally been held in relative close proximity to the eventual location of the gathering.) It has been posted on their "unofficial" Internet site, that the Rainbow Family has decided to conduct their 2000 gathering in the Saginaw Creek drainage of the Beaverhead National Forest.

II. - Current Conditions

- Estimates indicate there are currently between 400 and 500 Rainbow Family members gathered at the site on Beaverhead National Forest lands in Saginaw Creek. The number of "Rainbows" attending this gathering is expected to grow dramatically over the next several weeks.
- Local merchants and businesses are already beginning to report minor problems (i.e., mostly loitering and shop-lifting). Local medical and health officials are reporting some increases in requests for services.
- The USDA Forest Service has assigned a multi-disciplinary Incident Management Team headed by Incident Commander [REDACTED] (a US Forest Service [REDACTED] from their Regional Office in Missoula). That team is specifically charged with managing the environmental, economic, and social impacts associated with such a large gathering on National Forest lands. They are expected to be in place and operational sometime today. b2
b6
b7c
(both)
- The Forest Service Incident Management Team anticipates involving local Beaverhead County officials in a "Unified Command". (Any involvement by agencies or personnel from the State of Montana will be at the specific request of local authorities.)
- To date there have been several "coordination" meetings between Beaverhead County officials and representatives of various state agencies. As a result of these meetings, MT-DES anticipates the distinct possibility of receiving requests from Beaverhead County for some form of assistance (between now and July 10th) by each of the following state agencies:
 - MT-DOJ (Division of Criminal Investigation, and Highway Patrol)
 - MT-DES
 - MT-DPHHS
 - MT-DEQ
 - MT-DNRC
 - MT-DOT
 - MT-DFWP
- On June 12th, 2000, Beaverhead County Commissioners signed Resolution No. 2000-11 in which they declared a local emergency pursuant to 10-3-(402 or 403) MCA.

III. - Summary of State Resources Committed

- Based on the nature and magnitude of impacts experienced by other communities associated with previous Rainbow Family Gatherings, Governor Marc Racicot signed an Executive Order declaring an emergency within Beaverhead County.
- Upon receipt of a verbal request for assistance from Beaverhead County, MT-DES assigned 2 Agency Representatives to the Dillon area. One will work with the USFS Incident Management Team at their Incident Command Post, and the other will work at the Beaverhead County Emergency Operations Center.

- MT-Department of Public Health and Human Services is providing direct support to Beaverhead Co. health officials (i.e., Todd Damrow, et al).
- MT-Department of Justice is assisting local law enforcement authorities through its ongoing information gathering activities.

